



TEST REPORT

98, Gyoyukwon-ro, Gwacheon-si, Gyeonggi-do, 13810, Korea

TEL 82-2-3667-9134

FAX 82-2-3667-9140

Report No. : TAK-2019-106015

Receipt Date : Jul.03.2019

Customer : Seok choon, Oh

Test Date : Jul.12.2019

JEONO CO.,LTD

#641, Aegibong-ro, Tongjin-eup, Gimpo-si, Gyeonggi-do, Korea.

Sample : Stainless Steel Tie

Testing Date : Jul.03.2019 ~ Jul.12.2019

Testing Environment : Temperature (20 ± 5)°C, Relative humidity (40 ± 20) %

Test method : Refer to following pages

Test result : Refer to following pages

Attachment : Flow chart and Sample pictures

USAGE : QUALITY CONTROL

- NOTE : 1. The test results on this test report are only limited to the samples and sample names provided by the customer and KTR does not guarantee the quality of all products of the customer, and you can confirm the authenticity of the test report online (www.ktr.or.kr) or by using the QR code.
2. This test report shall not be used for public relation, advertisement, lawsuit and any other purposes outside the scope of its defined usage.
3. Only original copy (including certified copy) of the test report is valid – electronic copy (hard and/or soft) is for your reference only.

Kweon Deok Jun

Prepared by Kweon Deok Jun

Tel : 02-2092-3792

Park Jung-ae

Reviewed by Park Jung-ae

Technical Manager

Tel : 1577-0091(ARS ①→④)

Jul.12.2019

Korea Testing & Research Institute

President

Deputy

Kyung J Kang



QR Code to verify Genuineness

TEST REPORT

Report No. : TAK-2019-106015

Sample : Stainless Steel Tie

TEST RESULT

Test itmes	Unit	Sample	Results	MDL	Test Methods
Pb	mg/kg	-	Not detected	10	IEC 62321-5 : 2013(AAS, Apply Correspondingly)
Cd	mg/kg	-	Not detected	1	IEC 62321-5 : 2013(AAS, Apply Correspondingly)
Hg	mg/kg	-	Not detected	1	IEC 62321-4 : 2013(DMA, Apply Correspondingly)
Cr ⁶⁺	μg/cm ²	-	Negative	-	IEC 62321-7-1 : 2015(UV/Vis, Apply Correspondingly)
Total-PBBs	mg/kg	-	Not Detected	-	IEC 62321-6 Ed. 1.0 : 2015(GC/MS, Apply Correspondingly)
Mono-BB	mg/kg	-	Not Detected	10	IEC 62321-6 Ed. 1.0 : 2015(GC/MS, Apply Correspondingly)
Di-BB	mg/kg	-	Not Detected	10	IEC 62321-6 Ed. 1.0 : 2015(GC/MS, Apply Correspondingly)
Tri-BB	mg/kg	-	Not Detected	10	IEC 62321-6 Ed. 1.0 : 2015(GC/MS, Apply Correspondingly)
Tetra-BB	mg/kg	-	Not Detected	10	IEC 62321-6 Ed. 1.0 : 2015(GC/MS, Apply Correspondingly)
Penta-BB	mg/kg	-	Not Detected	10	IEC 62321-6 Ed. 1.0 : 2015(GC/MS, Apply Correspondingly)
Hexa-BB	mg/kg	-	Not Detected	10	IEC 62321-6 Ed. 1.0 : 2015(GC/MS, Apply Correspondingly)
Hepta-BB	mg/kg	-	Not Detected	10	IEC 62321-6 Ed. 1.0 : 2015(GC/MS, Apply Correspondingly)
Octa-BB	mg/kg	-	Not Detected	10	IEC 62321-6 Ed. 1.0 : 2015(GC/MS, Apply Correspondingly)
Nona-BB	mg/kg	-	Not Detected	10	IEC 62321-6 Ed. 1.0 : 2015(GC/MS, Apply Correspondingly)
Deca-BB	mg/kg	-	Not Detected	10	IEC 62321-6 Ed. 1.0 : 2015(GC/MS, Apply Correspondingly)
Total-PBDEs	mg/kg	-	Not Detected	-	IEC 62321-6 Ed. 1.0 : 2015(GC/MS, Apply Correspondingly)
Mono-BDE	mg/kg	-	Not Detected	10	IEC 62321-6 Ed. 1.0 : 2015(GC/MS, Apply Correspondingly)
Di-BDE	mg/kg	-	Not Detected	10	IEC 62321-6 Ed. 1.0 : 2015(GC/MS, Apply Correspondingly)
Tri-BDE	mg/kg	-	Not Detected	10	IEC 62321-6 Ed. 1.0 : 2015(GC/MS, Apply Correspondingly)
Tetra-BDE	mg/kg	-	Not Detected	10	IEC 62321-6 Ed. 1.0 : 2015(GC/MS, Apply Correspondingly)
Penta-BDE	mg/kg	-	Not Detected	10	IEC 62321-6 Ed. 1.0 : 2015(GC/MS, Apply Correspondingly)
Hexa-BDE	mg/kg	-	Not Detected	10	IEC 62321-6 Ed. 1.0 : 2015(GC/MS, Apply Correspondingly)
Hepta-BDE	mg/kg	-	Not Detected	10	IEC 62321-6 Ed. 1.0 : 2015(GC/MS, Apply Correspondingly)
Octa-BDE	mg/kg	-	Not Detected	10	IEC 62321-6 Ed. 1.0 : 2015(GC/MS, Apply Correspondingly)
Nona-BDE	mg/kg	-	Not Detected	10	IEC 62321-6 Ed. 1.0 : 2015(GC/MS, Apply Correspondingly)
Deca-BDE	mg/kg	-	Not Detected	10	IEC 62321-6 Ed. 1.0 : 2015(GC/MS, Apply Correspondingly)
DIBP	mg/kg	-	Not Detected	50	IEC 62321-8 Ed. 1.0 : 2017(GC/MS, Apply Correspondingly)



TEST REPORT

Report No. : TAK-2019-106015

Sample : Stainless Steel Tie

TEST RESULT

Test itmes	Unit	Sample	Results	MDL	Test Methods
DEHP	mg/kg	-	Not Detected	50	IEC 62321-8 Ed. 1.0 : 2017(GC/MS, Apply Correspondingly)
DBP	mg/kg	-	Not Detected	50	IEC 62321-8 Ed. 1.0 : 2017(GC/MS, Apply Correspondingly)
BBP	mg/kg	-	Not Detected	50	IEC 62321-8 Ed. 1.0 : 2017(GC/MS, Apply Correspondingly)

Notes : mg/kg = ppm (parts per million)

N.D = Not detected(<MDL)

MDL = Method detection limit

* Cr(VI): Negative (below $0.10 \mu\text{g}/\text{cm}^2$),
Inconclusive ($0.10 \mu\text{g}/\text{cm}^2 \sim 0.13 \mu\text{g}/\text{cm}^2$),
Positive (over $0.13 \mu\text{g}/\text{cm}^2$)

* DIBP : Di-isobutyl phthalate
DBP : Di-n-butyl phthalate
BBP : Butyl benzyl phthalate
DEHP : Di(ethylhexyl) phthalate

** GC/MS : Gas chromatograph-Mass spectrometry

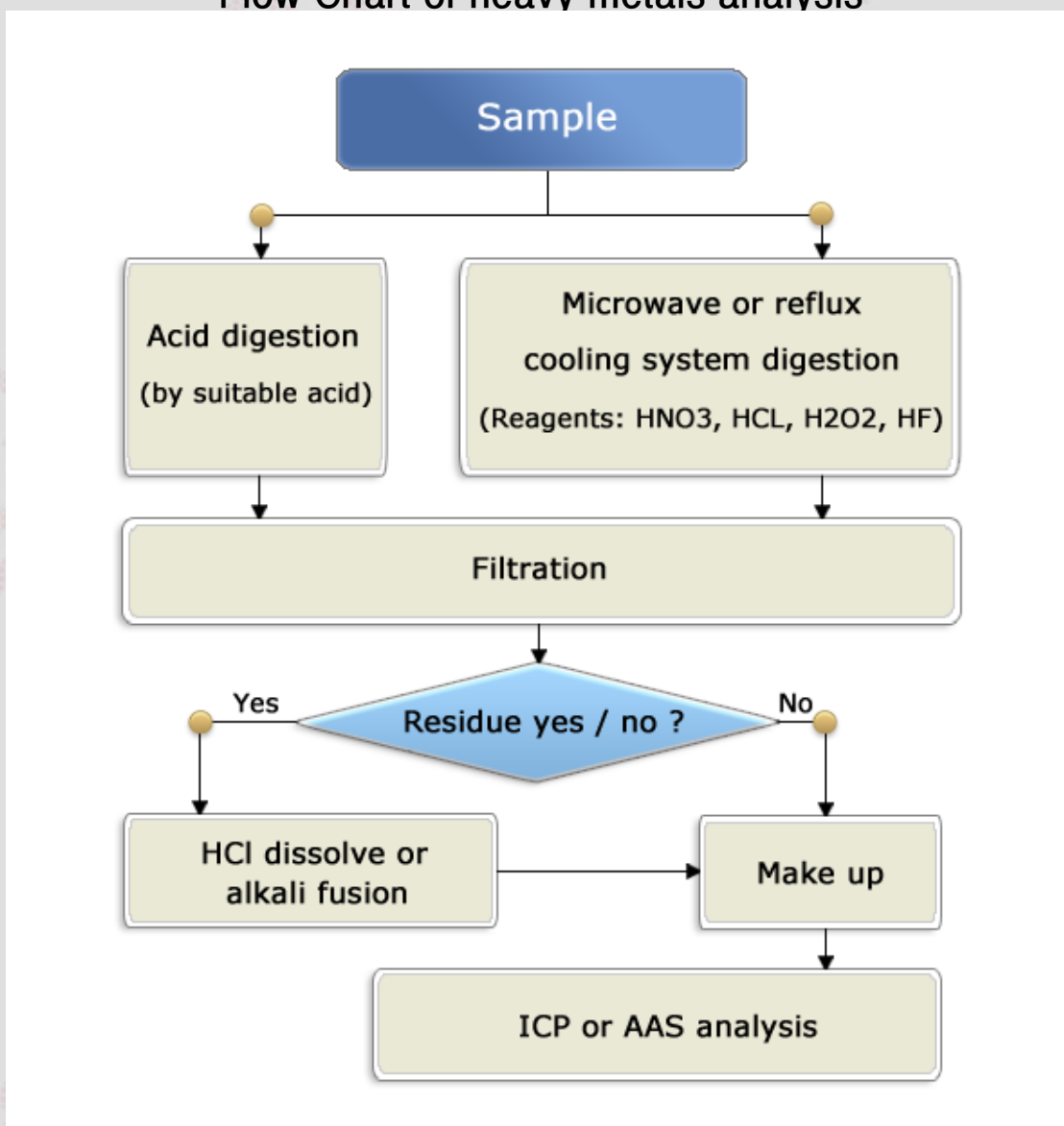
TEST REPORT

Report No. : TAK-2019-106015

Sample : Stainless Steel Tie

Pb, Cd, Hg : Tested by Yong-hyeon Lee(Tel : 02-2092-3682)

Flow Chart of heavy metals analysis



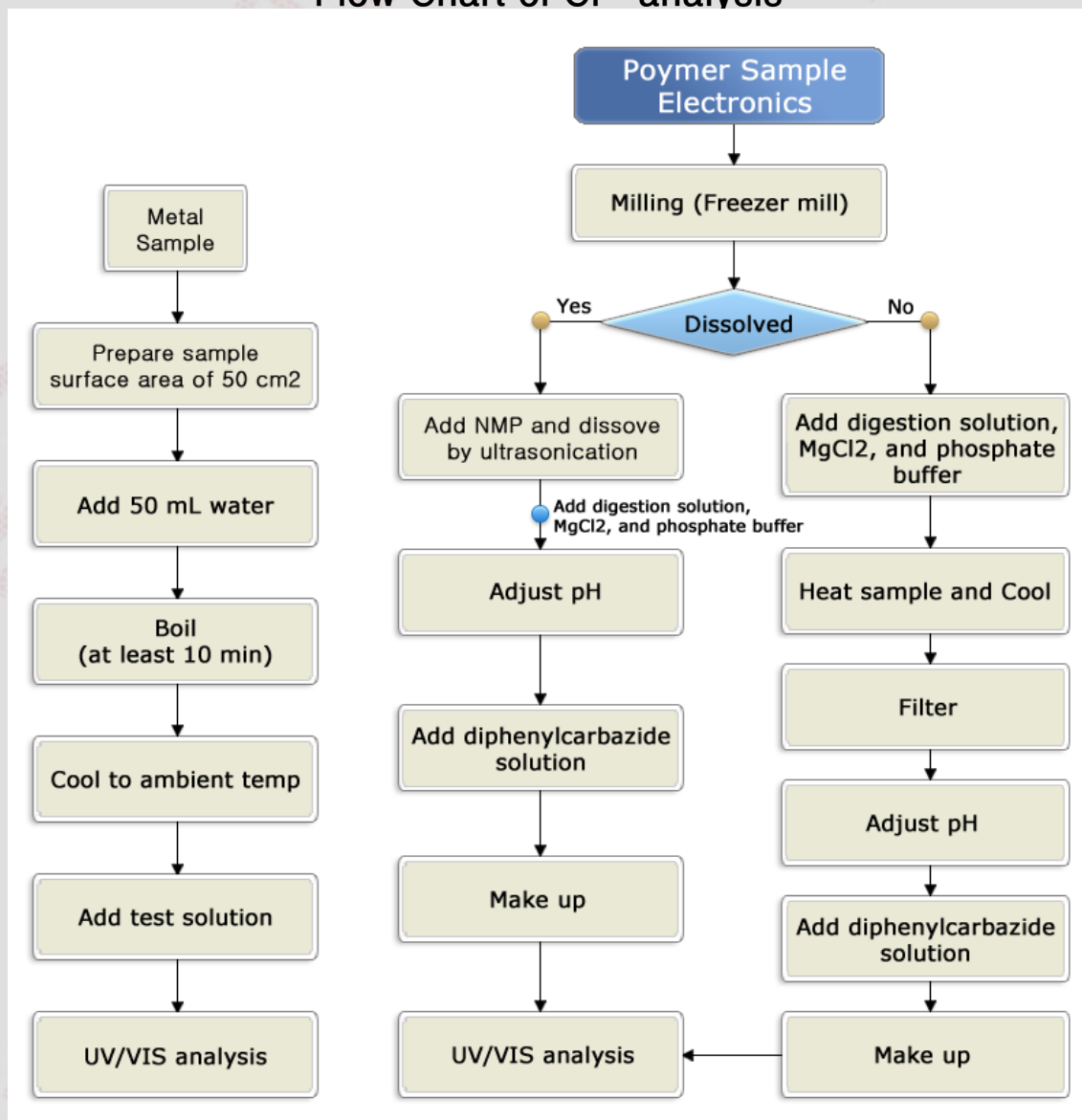
TEST REPORT

Report No. : TAK-2019-106015

Sample : Stainless Steel Tie

Cr⁶⁺ : Tested by Yong-hyeon Lee(Tel : 02-2092-3682)

Flow Chart of Cr⁶⁺ analysis



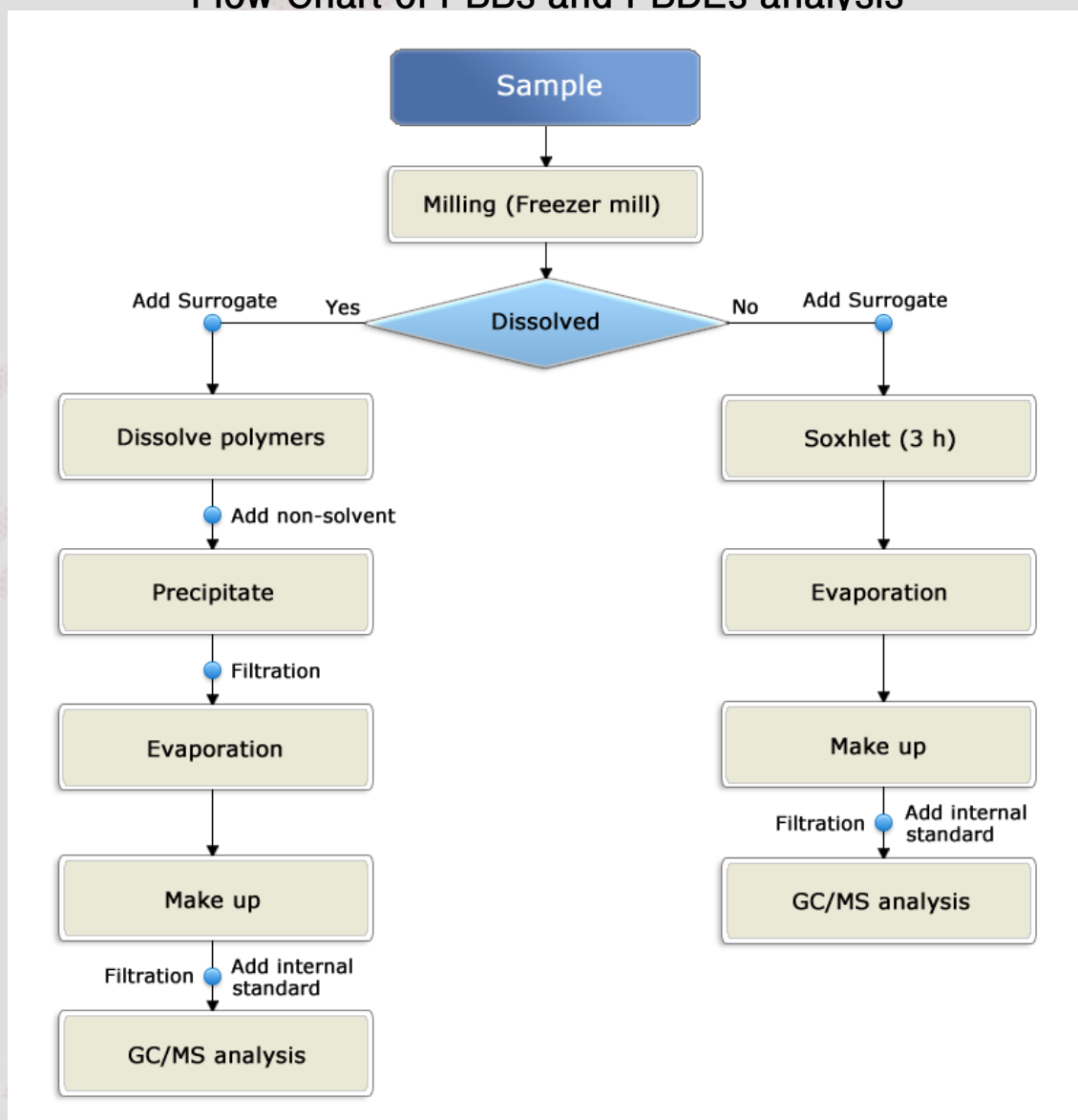
TEST REPORT

Report No. : TAK-2019-106015

Sample : Stainless Steel Tie

PBBs, PBDEs : Tested by Kweon Deok Jun(Tel : 02-2092-3792)

Flow Chart of PBBs and PBDEs analysis



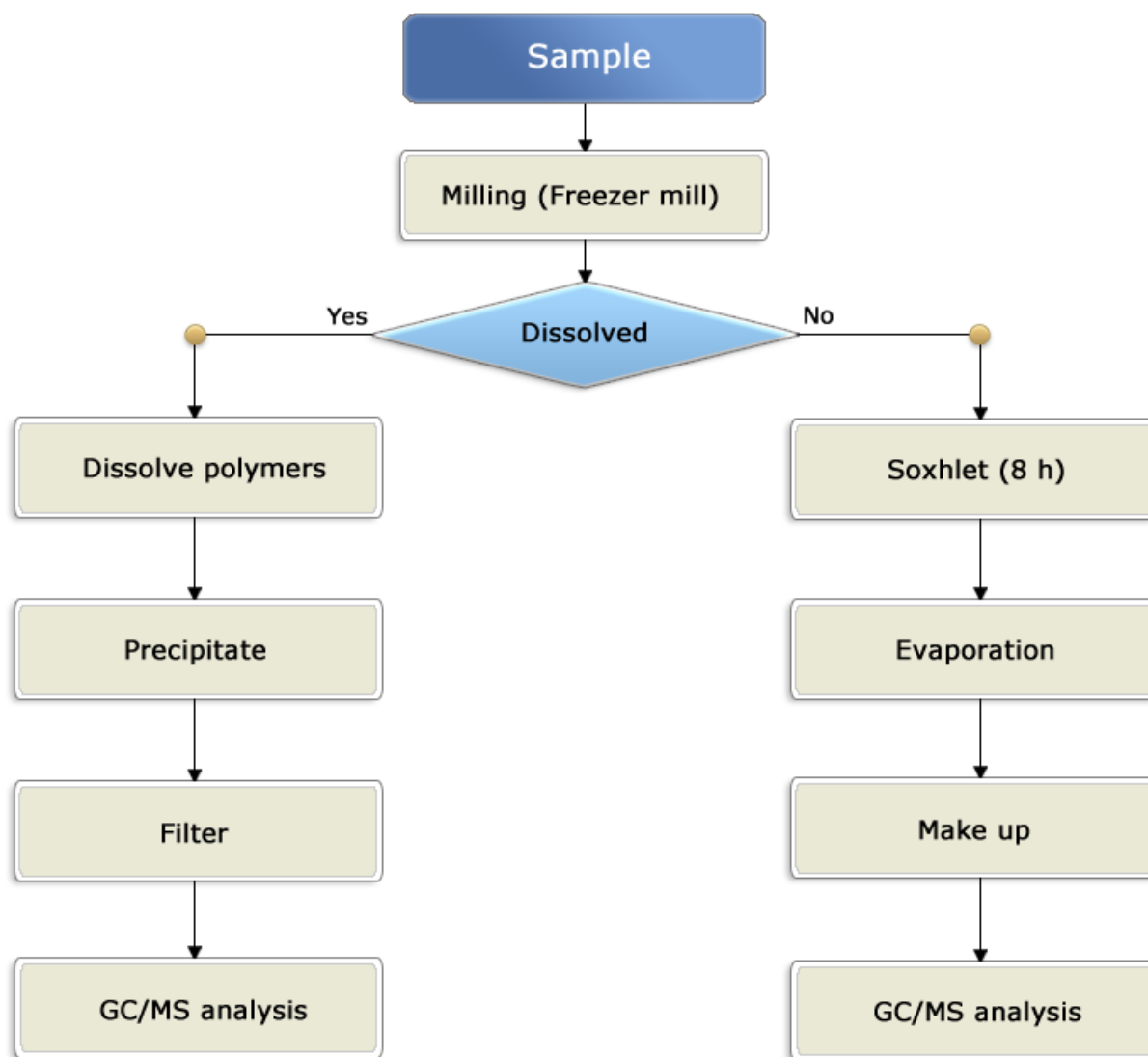
TEST REPORT

Report No. : TAK-2019-106015

Sample : Stainless Steel Tie

DIBP, DBP, BBP, DEHP : Tested by Kweon Deok Jun(Tel : 02-2092-3792)

Flow Chart of DIBP, DBP, BBP and DEHP analysis



Report No. : TAK-2019-106015

Sample : Stainless Steel Tie

Sample



- End of Report -