



TEST REPORT

98, Gyoyukwon-ro, Gwacheon-si, Gyeonggi-do, 13810, Korea

TEL 82-2-3667-9134

FAX 82-2-3667-9140

Report No. : TAK-2024-004289

Receipt Date : Jan.05.2024

Customer : Seok choon, Oh

Test Date : Jan.19.2024

Company name : JEONO CO.,LTD

Address : #641, Aegibong-ro, Tongjin-eup, Gimpo-si, Gyeonggi-do, Korea.

Sample : Cable Tie(VYDYNE 21SPF) - All Color

Testing Date : Jan.05.2024 ~ Jan.19.2024

Testing Environment : Temperature (20 ± 5)°C, Relative humidity (40 ± 20) %

Test method : Refer to following pages

Test result : Refer to following pages

Attachment : Flow chart and Sample pictures

USAGE : QUALITY CONTROL

- NOTE : 1. The test results on this test report are only limited to the samples and sample names provided by the customer and KTR does not guarantee the quality of all products of the customer, and you can confirm the authenticity of the test report online (www.ktr.or.kr) or by using the QR code.
2. This test report shall not be used for public relation, advertisement, lawsuit and any other purposes outside the scope of its defined usage.
3. Only original copy (including certified copy) of the test report is valid - electronic copy (hard and/or soft) is for your reference only.

Park Jung-ae

Prepared by Park Jung-ae

Tel : 02-2092-3673

Hwang Beomgoo

Reviewed by Hwang Beomgoo

Technical Manager

Tel : 1577-0091(ARS ①→④)

Jan.19.2024

Korea Testing & Research Institute

President

Kim Hyun cheol



QR Code to verify Genuineness



TEST REPORT

Report No. : TAK-2024-004289

Sample : Cable Tie(VYDYNE 21SPF) – All Color

TEST RESULT

Test itmes	Unit	Sample	Results	MDL	Test Methods
Pb	mg/kg	–	Not detected	10	applied IEC 62321-5 Ed.1.0:2013
Cd	mg/kg	–	Not detected	1	applied IEC 62321-5 Ed.1.0:2013
Hg	mg/kg	–	Not detected	1	applied IEC 62321-4 Ed.1.1:2017
Cr ⁶⁺	mg/kg	–	Not detected	8	applied IEC 62321-7-2 Ed.1.0:2017
Total-PBBs	mg/kg	–	Not detected	–	applied IEC 62321-6 Ed.1.0:2015
Mono-BB	mg/kg	–	Not detected	10	applied IEC 62321-6 Ed.1.0:2015
Di-BB	mg/kg	–	Not detected	10	applied IEC 62321-6 Ed.1.0:2015
Tri-BB	mg/kg	–	Not detected	10	applied IEC 62321-6 Ed.1.0:2015
Tetra-BB	mg/kg	–	Not detected	10	applied IEC 62321-6 Ed.1.0:2015
Penta-BB	mg/kg	–	Not detected	10	applied IEC 62321-6 Ed.1.0:2015
Hexa-BB	mg/kg	–	Not detected	10	applied IEC 62321-6 Ed.1.0:2015
Hepta-BB	mg/kg	–	Not detected	10	applied IEC 62321-6 Ed.1.0:2015
Octa-BB	mg/kg	–	Not detected	10	applied IEC 62321-6 Ed.1.0:2015
Nona-BB	mg/kg	–	Not detected	10	applied IEC 62321-6 Ed.1.0:2015
Deca-BB	mg/kg	–	Not detected	10	applied IEC 62321-6 Ed.1.0:2015
Total-PBDEs	mg/kg	–	Not detected	–	applied IEC 62321-6 Ed.1.0:2015
Mono-BDE	mg/kg	–	Not detected	10	applied IEC 62321-6 Ed.1.0:2015
Di-BDE	mg/kg	–	Not detected	10	applied IEC 62321-6 Ed.1.0:2015
Tri-BDE	mg/kg	–	Not detected	10	applied IEC 62321-6 Ed.1.0:2015
Tetra-BDE	mg/kg	–	Not detected	10	applied IEC 62321-6 Ed.1.0:2015
Penta-BDE	mg/kg	–	Not detected	10	applied IEC 62321-6 Ed.1.0:2015
Hexa-BDE	mg/kg	–	Not detected	10	applied IEC 62321-6 Ed.1.0:2015
Hepta-BDE	mg/kg	–	Not detected	10	applied IEC 62321-6 Ed.1.0:2015
Octa-BDE	mg/kg	–	Not detected	10	applied IEC 62321-6 Ed.1.0:2015
Nona-BDE	mg/kg	–	Not detected	10	applied IEC 62321-6 Ed.1.0:2015
Deca-BDE	mg/kg	–	Not detected	10	applied IEC 62321-6 Ed.1.0:2015
DIBP	mg/kg	–	Not Detected	50	applied IEC 62321-8 Ed.1.0:2017



TEST REPORT

Report No. : TAK-2024-004289

Sample : Cable Tie(VYDYNE 21SPF) – All Color

TEST RESULT

Test itmes	Unit	Sample	Results	MDL	Test Methods
DEHP	mg/kg	–	Not Detected	50	applied IEC 62321-8 Ed.1.0:2017
DBP	mg/kg	–	Not Detected	50	applied IEC 62321-8 Ed.1.0:2017
BBP	mg/kg	–	Not Detected	50	applied IEC 62321-8 Ed.1.0:2017

Notes : mg/kg = ppm (parts per million)

N.D = Not detected(<MDL)

MDL = Method detection limit

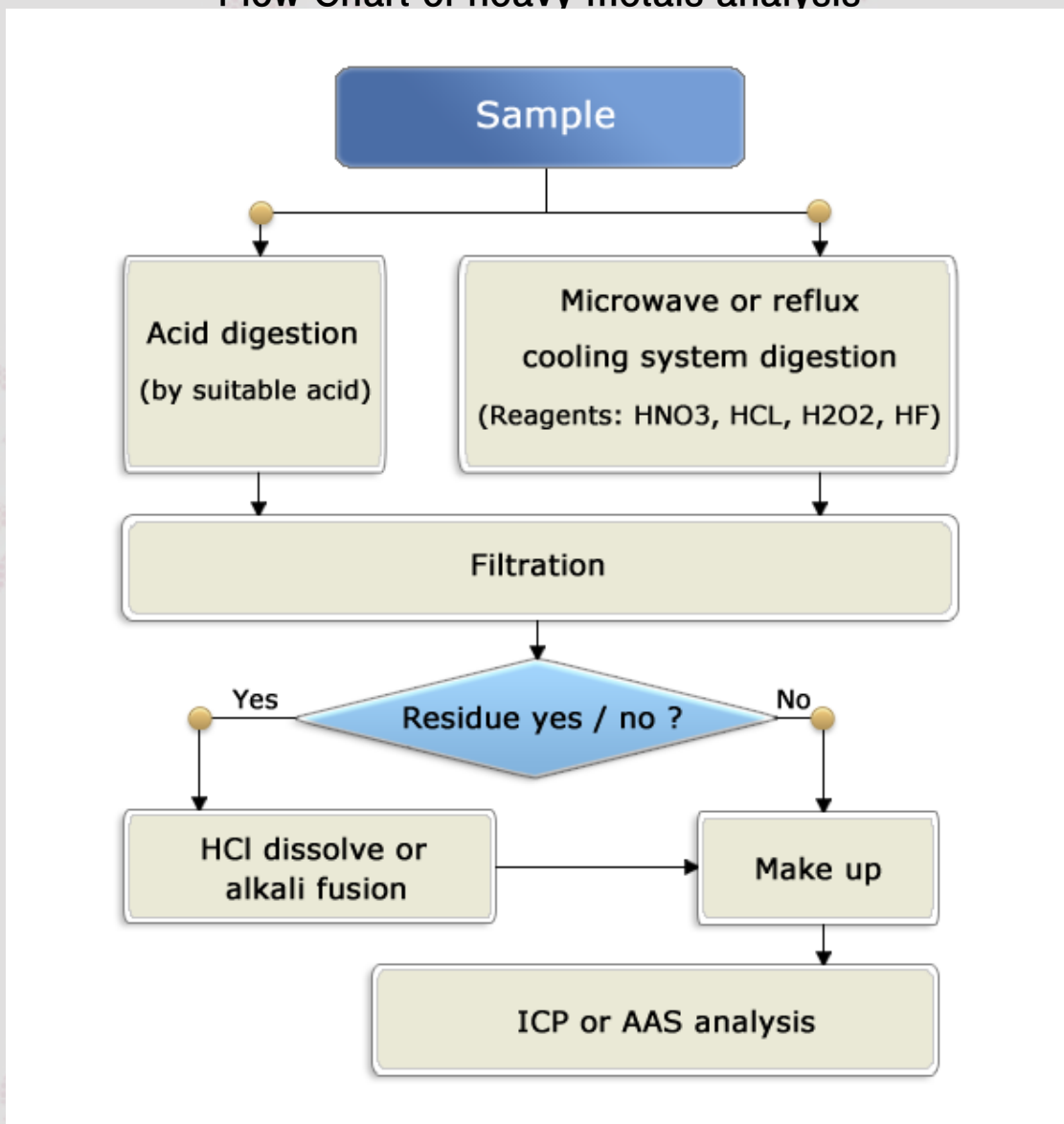
TEST REPORT

Report No. : TAK-2024-004289

Sample : Cable Tie(VYDYNE 21SPF) – All Color

Pb, Cd, Hg : Tested by Park Sehwan(Tel : 02-2092-3668)

Flow Chart of heavy metals analysis



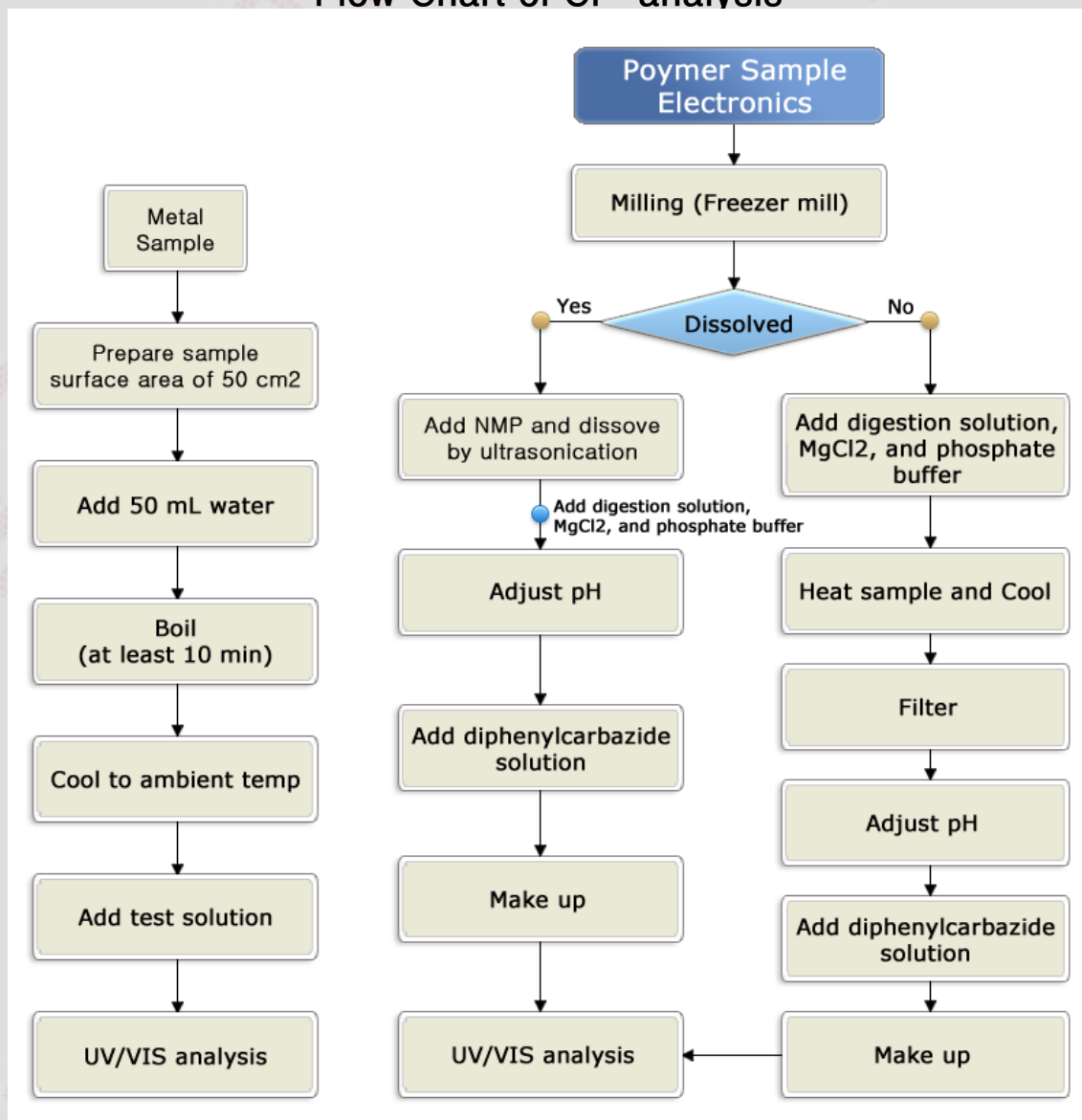
TEST REPORT

Report No. : TAK-2024-004289

Sample : Cable Tie(VYDYNE 21SPF) – All Color

Cr⁶⁺ : Tested by Park Sehwan(Tel : 02-2092-3668)

Flow Chart of Cr⁶⁺ analysis



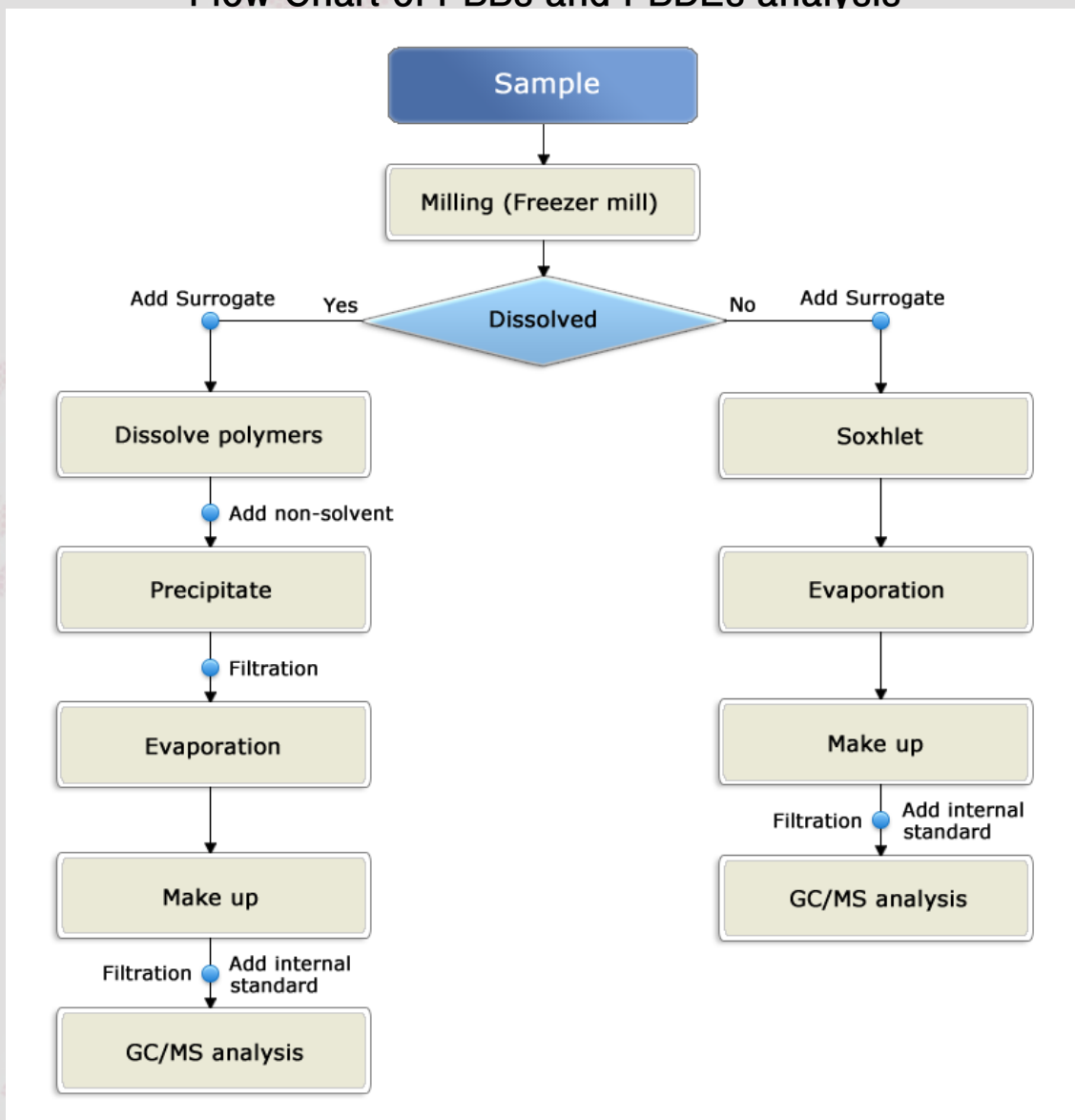
TEST REPORT

Report No. : TAK-2024-004289

Sample : Cable Tie(VYDYNE 21SPF) – All Color

PBBs, PBDEs : Tested by Park Jung-ae(Tel : 02-2092-3673)

Flow Chart of PBBs and PBDEs analysis



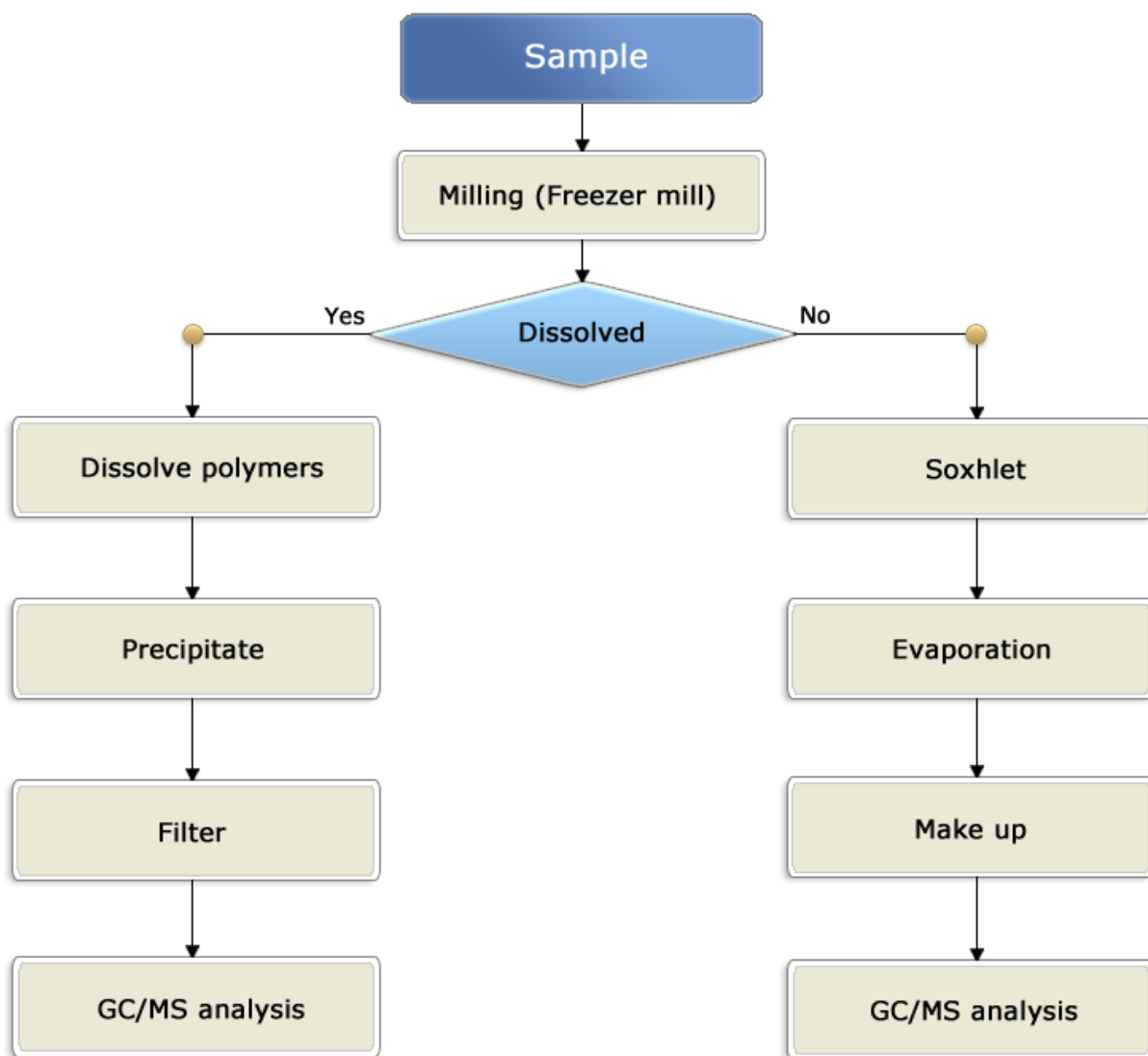
TEST REPORT

Report No. : TAK-2024-004289

Sample : Cable Tie(VYDYNE 21SPF) – All Color

Phthalates : Tested by Park Jimin(Tel : 02-2092-3676)

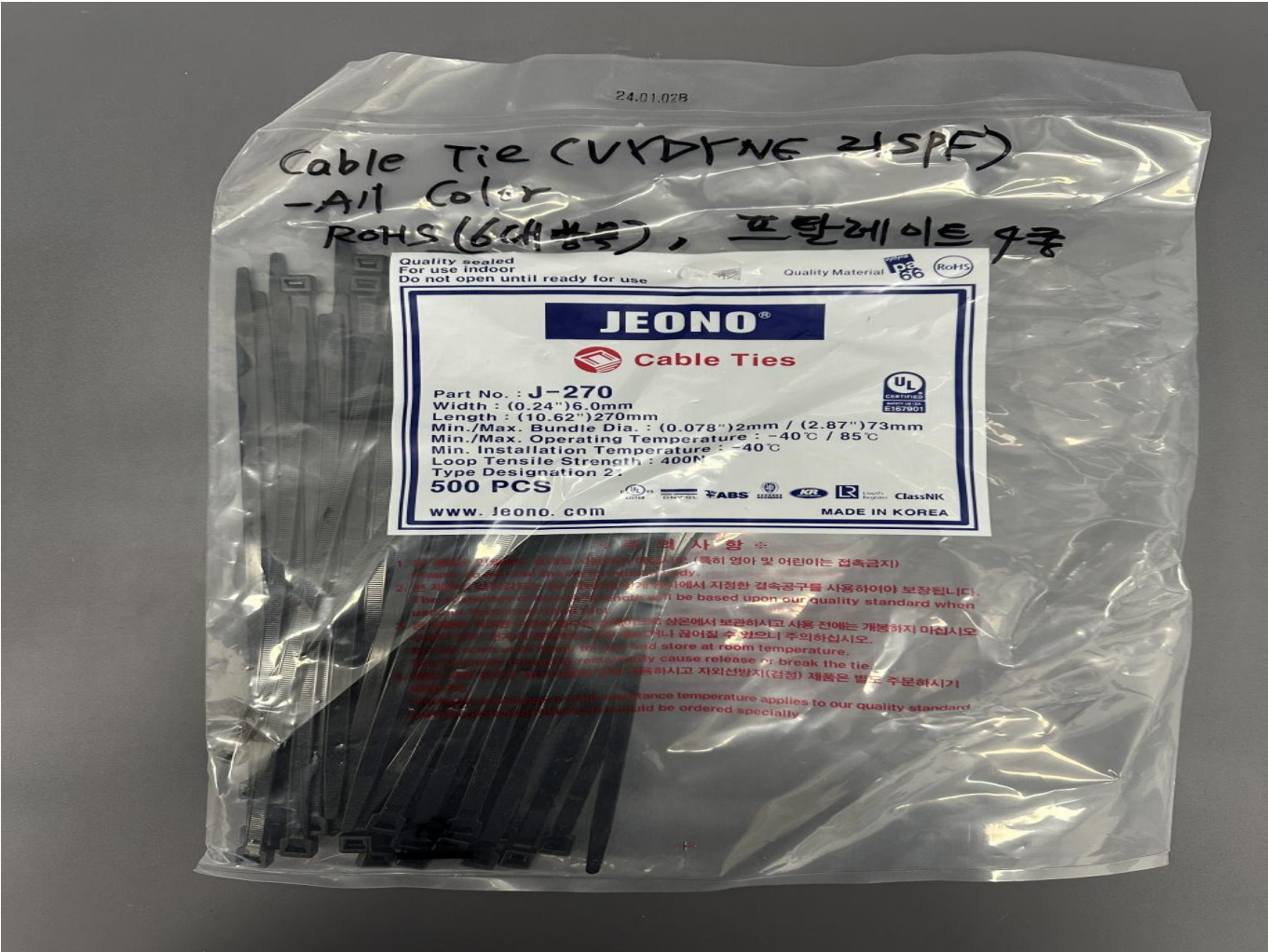
Flow Chart of Phthalates analysis



Report No. : TAK-2024-004289

Sample : Cable Tie(VYDYNE 21SPF) – All Color

Sample



- End of Report -