

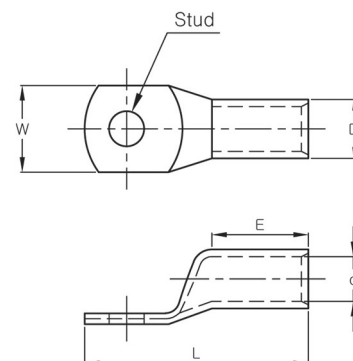
# Tubular Cable lugs and Compression Connectors

## (동관단자와 압착식 커넥터)

Tubular Cable Lugs, One Hole (Type-CE) (내수용동관단자) .....	B2~B4
Tubular Cable Lugs, Two Hole (Type-CE) (내수용동관단자) .....	B5
Tubular Butt-Connector (Type-SP, SB, S-L) (내수용슬리브) .....	B6~B8
Tubular Cable Lugs, One Hole (Type-CP) (UL) (동관단자) .....	B9~B11
Tubular Cable Lugs, One Hole (45 or 90 Angle) (UL) (절곡동관단자) .....	B12~B13
Tubular Cable Lugs, Two Hole (Type-CP) (UL) (동관단자) .....	B14
Code Conductor, One Hole (Type-CO) (IEC, UL) (동관단자) .....	B15~B18
Code Conductor, Two Hole (Type-CT) (IEC, UL) (동관단자) .....	B19~B21
Code Conductor, Blank Tongue (Type-CT(B)) (UL) (무홀동관단자) .....	B22
Code Conductor, Butt-Splice (Type-S, SS, SL) (IEC, UL) (슬리브) .....	B23~B25
Flex Conductor, One Hole (Type-FCO) (UL) (플렉서블 전선용 동관단자) .....	B26~B28
Flex Conductor, Two Hole (Type-FCT) (UL) (플렉서블 전선용 동관단자) .....	B29~B31
High Voltage Tubular Cable Lugs, One Hole (Type-HO) (UL) (고전압용 동관단자) .....	B32~B33
High Voltage Tubular Cable Lugs, Two Hole (Type-HT) (UL) (고전압용 동관단자) .....	B34~B35
Narrow Tongue Tubular Cable Lugs, One Hole (Type-JNCO) (나로우 동관단자) .....	B36~B38
Narrow Tongue Tubular Cable Lugs, Two Hole (Type-JNCT) (나로우 동관단자) .....	B39~B41
Tubular Cable Lugs, Four Hole Type (UL) (4Hole 동관단자) .....	B42~B43
Flex Conductor Tubular Butt-Connectors, Flared (Type-JFS(F)) (확관 슬리브) .....	B44
C Tap Connectors (Type-CC) (C형슬리브) .....	B45
Branch Connectors (Type-CC(3)) (3자형슬리브, 분기형 슬리브) .....	B46
Ground Sleeves (접지 슬리브) .....	B47
Code Conductor, One Hole, Aluminium Compressed (Type-AT(O)) (알루미늄 단자) .....	B48
Code Conductor, Two Hole, Aluminium Compressed (Type-AT(T)) (알루미늄 단자) .....	B49
Compression Cable Lugs, One Hole, AL-CU Connectors (Type - CAS, DTL) (알루미늄/구리 동관단자) .....	B50~B51
Compression Cable Lugs, Two Hole, AL-CU Connectors (Type - DTLD) (알루미늄/구리 동관단자) .....	B52
Compression Casting Lugs (UL) (동주물단자) .....	B53~B56
Tubular Cable Lugs, One-Hole, For Ground Busbar (Type-BO) (UL)(부스바용 동관단자) .....	B57
Tubular Cable Lugs, Two-Hole, For Ground Busbar (Type-BT) (UL)(부스바용 동관단자) .....	B58~B59

## TUBULAR CABLE LUGS, ONE HOLE, ROUND COMPRESSED TYPE-CE (내수용동관단자)

- Material : Electrolytic Copper
- Surface : Tin Plated
- Without Inspection Hole
- To IEC 60228 Class 2



Part Number	Wire Range		Stud Size	Dimension (mm)					Q' ty/ bag
	AWG	mm²		W	E	L	d	D	
JOCE 1.5-3	20~16	1.5	M3	6.5	6.0	16	1.8	3.0	1,000
JOCE 1.5-4			M4			17			
JOCE 2.5-3	16~14	2.5	M3	7.5	6.0	17	2.3	3.5	1,000
JOCE 2.5-4			M4			18			
JOCE 4-4	14~12	4	M4	8.5	7.0	21	3.0	4.5	1,000
JOCE 4-5			M5			22			
JOCE 6-4	12~10	6	M4	9.5	7.0	22	4.0	5.5	1,000
JOCE 6-5			M5			23			
JOCE 6-6			M6	10.0					
JOCE 10-5	8	10	M5	11.5	11	29	4.7	6.7	500
JOCE 10-6			M6						
JOCE 16-5	6	16	M5	12	10	29	5.4	7.4	300
JOCE 16-6			M6			33			
JOCE 16-8			M8	14					
JOCE 25-6	4	25	M6	13	11	32	6.7	9.0	300
JOCE 25-8			M8						
JOCE 35-6	2	35	M6	16	12	37	8.1	10.6	200
JOCE 35-8			M8			38			
JOCE 35-10			M10	17		42			
JOCE 50-6	1	50	M6	18	17	44	9.5	12	200
JOCE 50-8			M8			49			
JOCE 50-10			M10						
JOCE 50-12			M12	20		53			

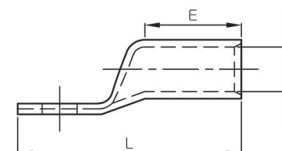
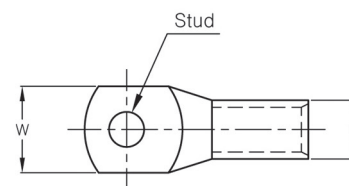
**TUBULAR CABLE LUGS, ONE-HOLE, ROUND COMPRESSED  
TYPE-CE (내수용동관단자)**

- Material : Electrolytic Copper
- Surface : Tin Plated
- Without Inspection Hole
- To IEC 60228 Class 2

Part Number	Wire Range		Stud Size	Dimension (mm)					Q' ty/ bag
	AWG	mm <sup>2</sup>		W	E	L	d	D	
JOCE 70-6	2/0	70	M6	22	21	53	11.3	14.6	100
JOCE 70-8			M8						
JOCE 70-10			M10			56			
JOCE 70-12			M12						
JOCE 95-6	3/0	95	M6	25	21	57	13.5	17.0	50
JOCE 95-8			M8						
JOCE 95-10			M10						
JOCE 95-12			M12						
JOCE 95-16			M16			67			
JOCE 120-8	250Kcmil	120	M8	28	24	64	15.2	19	50
JOCE 120-10			M10						
JOCE 120-12			M12			70			
JOCE 120-16			M16						
JOCE 150-10	300Kcmil	150	M10	31	31	76	17	21	30
JOCE 150-12			M12						
JOCE 150-16			M16			83			
JOCE 150-20			M20						
JOCE 185-10	350Kcmil	185	M10	35	34	80	19	23.5	30
JOCE 185-12			M12						
JOCE 185-16			M16			87			
JOCE 185-20			M20						
JOCE 240-10	500Kcmil	240	M10	40	36	93	22	27.4	25
JOCE 240-12			M12						
JOCE 240-16			M16						
JOCE 240-20			M20						

## TUBULAR CABLE LUGS, ONE-HOLE, ROUND COMPRESSED TYPE-CE (내수용동관단자)

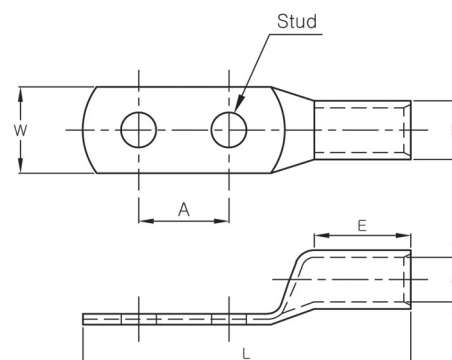
- Material : Electrolytic Copper
- Surface : Tin Plated
- Without Inspection Hole
- To IEC 60228 Class 2



Part Number	Wire Range		Stud Size	Dimension (mm)					Q' ty/ bag
	AWG	mm <sup>2</sup>		W	E	L	d	D	
JOCE 300-10	600Kcmil	300	M10	44	43	99	24	30.5	20
JOCE 300-12			M12						
JOCE 300-16			M16						
JOCE 300-20			M20						
JOCE 400-12	750Kcmil	400	M12	48	46	114	26	34	10
JOCE 400-16			M16						
JOCE 400-20			M20						
JOCE 400-24			M24						
JOCE 500-12	1000Kcmil	500	M12	57.5	52	135	31	40	10
JOCE 500-16			M16						
JOCE 500-20			M20						
JOCE 500-24			M24						
JOCE 630-12	1250Kcmil	630	M12	64.5	61	150	34	45	8
JOCE 630-16			M16						
JOCE 630-20			M20						
JOCE 630-24			M24						
JOCE 800-12	1500Kcmil	800	M12	73	78	185	39	50.6	5
JOCE 800-16			M16						
JOCE 800-20			M20						
JOCE 800-24			M24						
JOCE 1000-16	2000Kcmil	1000	M16	80	78	185	43	56.2	4
JOCE 1000-20			M20						
JOCE 1000-24			M24						

## TUBULAR CABLE LUGS, TWO-HOLE, ROUND COMPRESSED TYPE-CE (내수용동관단자)

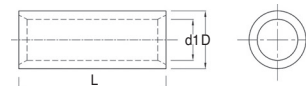
- Material : Electrolytic Copper
- Surface : Tin Plated
- Without Inspection Hole
- To IEC 60228 Class 2



Part Number	Wire Range		Stud Size	Dimension (mm)						Q'ty/ bag
	AWG	mm <sup>2</sup>		W	A	d	D	E	L	
JOCE 6-2	12~10	6	M5	9	22.5	4.0	5.5	12	53.5	1000
JOCE 10-2	8	10	M6	10	22.5	4.7	6.7	13	58.5	500
JOCE 16-2	6	16	M6	12	22.5	5.4	7.4	20	67.5	300
JOCE 25-2	4	25	M8	14	22.5	6.7	9	20	71.5	200
JOCE 35-2	2	35	M8	16	22.5	8.1	10.6	23	75.5	100
JOCE 50-2	1	50	M10	18	22.5	9.5	12	27	85.5	100
JOCE 70-2	2/0	70	M12	22	45	11.3	14.6	28	115	50
JOCE 95-2	3/0	95	M12	25	45	13.5	17	35	125	50
JOCE 120-2	250Kcmil	120	M12	28	45	15.2	19	40	130	50
JOCE 150-2	300Kcmil	150	M12	31	45	17	21	43	134	30
JOCE 185-2	350Kcmil	185	M12	34	45	19	23.5	45	141	25
JOCE 240-2	500Kcmil	240	M12	40	45	22	27.4	53	147	15
JOCE 300-2	600Kcmil	300	M12	45	45	24	30.5	63	162	10
JOCE 400-2	750Kcmil	400	M14	48	45	26	34	66	176	8
JOCE 500-2	1000Kcmil	500	M14	57	45	31	40	67	188	8
JOCE 630-2	1250Kcmil	630	M16	64	45	34	45	70	211	5
JOCE 800-2	1500Kcmil	800	M16	72	45	39	50.6	100	232	5
JOCE 1000-2	2000Kcmil	1000	M16	80	45	43	56.2	102	245	5

## TUBULAR BUTT-CONNECTOR TYPE-SP (내수용슬리브)

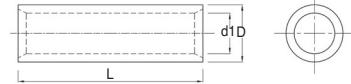
- Material : Electrolytic Copper
- Surface : Tin Plated
- To IEC 60228 Class 2



Part Number	Wire Range		d1	D	L	Q' ty/ bag
	AWG	mm <sup>2</sup>				
JSP 010	20~18	0.75	1.6	2.4	7.5	2,000
JSP 015	18~16	1.5	2.0	3.0	7.5	2,000
JSP 025	16~14	2.5	2.5	3.5	7.5	2,000
JSP 04	14~12	4	3.2	4.5	7.5	2,000
JSP 06	12~10	6	4.0	5.5	7.5	2,000
JSP 10	8	10	4.7	6.7	10	500
JSP 16	6	16	5.4	7.4	12	300
JSP 25	4~3	25	6.7	9.0	14	300
JSP 35	2	35	8.1	10.6	15	200
JSP 50	1~1/0	50	9.5	12	16	100
JSP 70	2/0	70	11.3	14.6	18	100
JSP 95	3/0~4/0	95	13.5	17	19.5	50
JSP 120	250Kcmil	120	15.2	19	21	70
JSP 150	300Kcmil	150	17	21	27	40
JSP 185	350Kcmil	185	19	23.5	32.5	35
JSP 240	500Kcmil	240	22	27.4	34	20
JSP 300	600Kcmil	300	24	30.5	37	20
JSP 400	750Kcmil	400	26	34	44	10
JSP 500	1000Kcmil	500	31	40	49	10
JSP 630	1200Kcmil	630	34	45	60	10

## TUBULAR BUTT-CONNECTOR TYPE-SB (내수용슬리브)

- Material : Electrolytic Copper
- Surface : Tin Plated
- To IEC 60228 Class 2

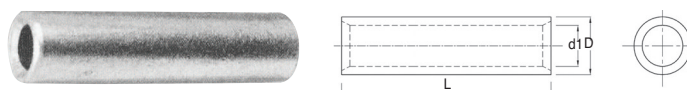


B

Part Number	Wire Range		d1	D	L	Q' ty/ bag
	AWG	mm <sup>2</sup>				
JSB 010	20~18	0.75	1.6	2.4	15	1,000
JSB 015	18~16	1.5	2.0	3.0	15	1,000
JSB 025	16~14	2.5	2.5	3.5	15	1,000
JSB 04	14~12	4	3.2	4.5	15	1,000
JSB 06	12~10	6	4.0	5.5	15	1,000
JSB 10	8	10	4.7	6.7	20	500
JSB 16	6	16	5.4	7.4	24	300
JSB 25	4~3	25	6.7	9.0	28	300
JSB 35	2	35	8.1	10.6	30	200
JSB 50	1~1/0	50	9.5	12	32	100
JSB 70	2/0	70	11.3	14.6	36	100
JSB 95	3/0~4/0	95	13.5	17	39.5	50
JSB 120	250Kcmil	120	15.2	19	42	70
JSB 150	300Kcmil	150	17	21	54	40
JSB 185	350Kcmil	185	19	23.5	65	35
JSB 240	500Kcmil	240	22	27.4	68	20
JSB 300	600Kcmil	300	24	30.5	74	20
JSB 400	750Kcmil	400	26	34	88	10
JSB 500	1000Kcmil	500	31	40	98	10
JSB 630	1200Kcmil	630	34	45	120	5

## TUBULAR BUTT-CONNECTOR TYPE-S-L (내수용슬리브)

- Material : Electrolytic Copper
- Surface : Tin Plated
- To IEC 60228 Class 2

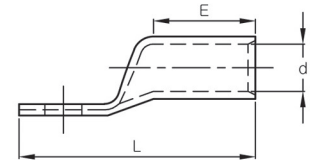
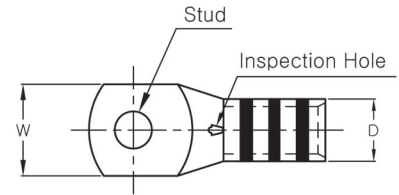


Part Number	Wire Range		d1	D	L	Q' ty/ bag
	AWG	mm <sup>2</sup>				
JS 010L	20~18	0.75	1.6	2.4	30	1,000
JS 015L	18~16	1.5	2.0	3.0	30	1,000
JS 025L	16~14	2.5	2.5	3.5	30	1,000
JS 04L	14~12	4	3.2	4.5	30	1,000
JS 06L	12~10	6	4.0	5.5	30	1,000
JS 10L	8	10	4.7	6.7	40	500
JS 16L	6	16	5.4	7.4	48	300
JS 25L	4~3	25	6.7	9.0	56	200
JS 35L	2	35	8.1	10.6	60	100
JS 50L	1~1/0	50	9.5	12	64	100
JS 70L	2/0	70	11.3	14.6	72	50
JS 95L	3/0~4/0	95	13.5	17	78	40
JS 120L	250Kcmil	120	15.2	19	82	35
JS 150L	300Kcmil	150	17	21	108	30
JS 185L	350Kcmil	185	19	23.5	130	20
JS 240L	500Kcmil	240	22	27.4	136	15
JS 300L	600Kcmil	300	24	30.5	148	10
JS 400L	750Kcmil	400	26	34	176	5
JS 500L	1000Kcmil	500	31	40	196	4
JS 630L	1200Kcmil	630	34	45	240	4



## TUBULAR CABLE LUGS, ONE-HOLE, ROUND COMPRESSED TYPE-CP (동관단자)

- Material : Electrolytic Copper (TPC)
- Surface : Tin Plated
- With Inspection Hole to visually assure full Conductor insertion.
- Color Coded to Show Proper Die Number and Color 10mm~70mm
- To IEC 60228 Class 2
- UL Listed 486A-486B up to 35KV

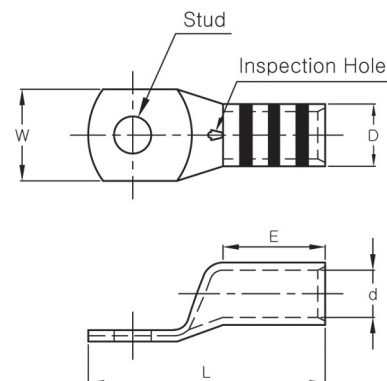


B

Part Number	Wire Range		Stud Size	Dimension (mm)					Code Cable Die Color & No.	Q' ty/ bag
	AWG	mm <sup>2</sup>		W	E	L	d	D		
JOCP 1.5–3	20~16	1.5	M3	6.5	7	16	1.8	3.0	–	1,000
JOCP 1.5–4			M4			17				
JOCP 2.5–3	16~14	2.5	M3	7.5	7	17	2.3	3.5	–	1,000
JOCP 2.5–4			M4			18				
JOCP 4–4	14~12	4	M4	8.5	9	21	3.0	4.5	–	1,000
JOCP 4–5			M5	9.0		22				
JOCP 6–4	12~10	6	M4	9.5	9	22	4.0	5.5	–	1,000
JOCP 6–5			M5			23				
JOCP 6–6			M6	10						
JOCP 10–5	8	10	M5	11.5	13	29	4.7	6.7	Red 21	500
JOCP 10–6			M6							
JOCP 16–5	6	16	M5	12	13	29	5.4	7.4	Blue 24	300
JOCP 16–6			M6			33				
JOCP 16–8			M8	14						
JOCP 25–6	4	25	M6	13	13	32	6.7	9.0	Gray 29	300
JOCP 25–8			M8							
JOCP 35–6	2	35	M6	16	16	37	8.1	10.6	Brown 33	200
JOCP 35–8			M8			38				
JOCP 35–10			M10	17		42				
JOCP 50–6	1	50	M6	18	22.5	44	9.5	12	Green 37	200
JOCP 50–8			M8			49				
JOCP 50–10			M10							
JOCP 50–12			M12	20		53				

## TUBULAR CABLE LUGS, ONE-HOLE, ROUND COMPRESSED TYPE-CP (동관단자)

- Material : Electrolytic Copper (TPC)
- Surface : Tin Plated
- With Inspection Hole to visually assure full Conductor insertion.
- Color Coded to Show Proper Die Number and Color 95mm<sup>2</sup>~1000mm<sup>2</sup>
- To IEC 60228 Class 2
- UL Listed 486A-486B up to 35KV



Part Number	Wire Range		Stud Size	Dimension (mm)					Code Cable Die Color & No.	Q' ty/ bag
	AWG	mm <sup>2</sup>		W	E	L	d	D		
JOCP 70-6	2/0	70	M6	22	25	53	11.3	14.6	Black 45	100
JOCP 70-8			M8							
JOCP 70-10			M10							
JOCP 70-12			M12			57				
JOCP 95-6	3/0	95	M6	25	26	58	13.5	17	Orange 50	50
JOCP 95-8			M8							
JOCP 95-10			M10							
JOCP 95-12			M12			61				
JOCP 95-16			M16			67				
JOCP 120-8	250Kcmil	120	M8	28	29	64	15.2	19	Purple 54	50
JOCP 120-10			M10							
JOCP 120-12			M12							
JOCP 120-16			M16			70				
JOCP 150-10	300Kcmil	150	M10	31	37	76	17	21	Yellow 62	30
JOCP 150-12			M12							
JOCP 150-16			M16							
JOCP 150-20			M20			83				
JOCP 185-10	350Kcmil	185	M10	35	39	80	19	23.5	Red 71	30
JOCP 185-12			M12							
JOCP 185-16			M16							
JOCP 185-20			M20			87				
JOCP 240-10	500Kcmil	240	M10	40	45	93	22	27.4	Brown 87	25
JOCP 240-12			M12							
JOCP 240-16			M16							
JOCP 240-20			M20							

## TUBULAR CABLE LUGS, ONE-HOLE, ROUND COMPRESSED TYPE-CP (동관단자)

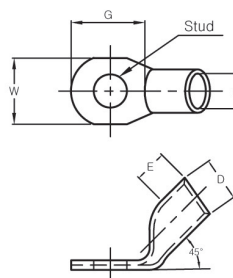
- Material : Electrolytic Copper (TPC)
- Surface : Tin Plated
- With Inspection Hole to visually assure full Conductor insertion.
- Color Coded to Show Proper Die Number and Color 95mm<sup>2</sup>~1000mm<sup>2</sup>
- To IEC 60228 Class 2
- UL Listed 486A-486B up to 35KV

**B**

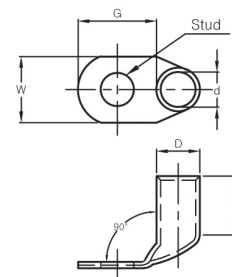

Part Number	Wire Range		Stud Size	Dimension (mm)					Code Cable Die Color & No.	Q' ty / bag
	AWG	mm <sup>2</sup>		W	E	L	d	D		
JOCP 300-10	600Kcmil	300	M10	45	50	100	24	30.5	Green 94	20
JOCP 300-12			M12							
JOCP 300-16			M16							
JOCP 300-20			M20							
JOCP 400-12	750Kcmil	400	M12	49	53	114	26	34	Black 106	10
JOCP 400-16			M16							
JOCP 400-20			M20							
JOCP 400-24			M24							
JOCP 500-12	1000Kcmil	500	M12	57.5	59	136	31	40	White 125	10
JOCP 500-16			M16							
JOCP 500-20			M20							
JOCP 500-24			M24							
JOCP 630-12	1250Kcmil	630	M12	64.5	68	150	34	45	Pink 142	8
JOCP 630-16			M16							
JOCP 630-20			M20							
JOCP 630-24			M24							
JOCP 800-12	1500Kcmil	800	M12	73	84	185	39	50.6	Orange 150	5
JOCP 800-16			M16							
JOCP 800-20			M20							
JOCP 800-24			M24							
JOCP 1000-16	2000Kcmil	1000	M16	80	84	185	43	56.2	Green 194	4
JOCP 1000-20			M20							
JOCP 1000-24			M24							

## TUBULAR CABLE LUGS, ONE-HOLE, 90 ANGLE or 45 ANGLE TYPE-ANGLE CP (절곡동관단자)

- Material : Electrolytic Copper (TPC)
- Surface : Tin Plated
- Color Coded to Show Proper Die Number and Color 6mm<sup>2</sup>~70mm<sup>2</sup>
- To IEC 60228 Class 2
- UL Listed 486A-486B up to 35KV



(Figure 1)



(Figure 2)



Part Number		Wire Range		Stud Size	Dimension (mm)					Code Cable Die Color & No.	Q'ty / bag
Pig No 1	Pig No 2	AWG	mm <sup>2</sup>		W	G	E	d	D		
JOCP 6-5-1	JOCP 6-5-2	12~10	6	M5	10	16.5	9.0	4.0	5.5	-	1,000
JOCP 6-6-1	JOCP 6-6-2			M6		17.5					
JOCP 10-5-1	JOCP 10-5-2	8	10	M5	12	16.5	10	4.7	6.7	Red 21	500
JOCP 10-6-1	JOCP 10-6-2			M6		17.5					
JOCP 16-5-1	JOCP 16-5-2	6	16	M5	12	17.5	13	5.4	7.4	Blue 24	300
JOCP 16-6-1	JOCP 16-6-2			M6		18.5					
JOCP 25-6-1	JOCP 25-6-2	4	25	M6	13	18.5	15	6.7	9.0	Gray 29	300
JOCP 25-8-1	JOCP 25-8-2			M8		23					
JOCP 35-6-1	JOCP 35-6-2	2	35	M6	16	18.5	17	8.1	10.6	Brown 33	200
JOCP 35-8-1	JOCP 35-8-2			M8		23					
JOCP 35-10-1	JOCP 35-10-2			M10		27					
JOCP 50-6-1	JOCP 50-6-2	1	50	M6	18	23	19	9.5	12	Green 37	200
JOCP 50-8-1	JOCP 50-8-2			M8		28					
JOCP 50-10-1	JOCP 50-10-2			M10		31					
JOCP 50-12-1	JOCP 50-12-2			M12		31					
JOCP 70-6-1	JOCP 70-6-2	2/0	70	M6	21	23	21	11.3	14.6	Black 45	100
JOCP 70-8-1	JOCP 70-8-2			M8		24					
JOCP 70-10-1	JOCP 70-10-2			M10		28					
JOCP 70-12-1	JOCP 70-12-2			M12		31					

## TUBULAR CABLE LUGS, ONE-HOLE, 90 ANGLE or 45 ANGLE TYPE-ANGLE CP (절곡동관단자)

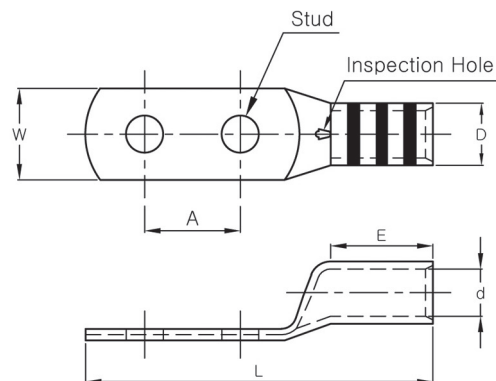
- Material : Electrolytic Copper (TPC)
- Surface : Tin Plated
- Color Coded to Show Proper Die Number and Color 95mm<sup>2</sup>~400mm<sup>2</sup>
- To IEC 60228 Class 2
- UL Listed 486A-486B up to 35KV



Part Number		Wire Range		Stud Size	Dimension (mm)					Code Cable Die Color & No.	Q'ty / bag
Pig No 1	Pig No 2	AWG	mm <sup>2</sup>		W	G	E	d	D		
JOCP 95-6-1	JOCP 95-6-2	3/0	95	M6	26	26	25	13.5	17	Orange 48	50
JOCP 95-8-1	JOCP 95-8-2			M8		26					
JOCP 95-10-1	JOCP 95-10-2			M10		29					
JOCP 95-12-1	JOCP 95-12-2			M12		31					
JOCP 120-8-1	JOCP 120-8-2	250Kcmil	120	M8	28	29	26	15.2	19	Purple 54	50
JOCP 120-10-1	JOCP 120-10-2			M10		30					
JOCP 120-12-1	JOCP 120-12-2			M12		31					
JOCP 120-16-1	JOCP 120-16-2			M16		37.5					
JOCP 150-10-1	JOCP 150-10-2	300Kcmil	150	M10	31	33	30	17.0	21	Yellow 62	30
JOCP 150-12-1	JOCP 150-12-2			M12		35					
JOCP 150-16-1	JOCP 150-16-2			M16		40					
JOCP 185-10-1	JOCP 185-10-2	350Kcmil	185	M10	35	37.5	30	19.0	23.5	Red 71	30
JOCP 185-12-1	JOCP 185-12-2			M12							
JOCP 185-16-1	JOCP 185-16-2			M16							
JOCP 240-10-1	JOCP 240-10-2	500Kcmil	240	M10	41	46.5	35	22	27.4	Brown 87	25
JOCP 240-12-1	JOCP 240-12-2			M12							
JOCP 240-16-1	JOCP 240-16-2			M16							
JOCP 300-10-1	JOCP 300-10-2	600Kcmil	300	M10	45	54	44	24	30.5	Green 94	20
JOCP 300-12-1	JOCP 300-12-2			M12							
JOCP 300-16-1	JOCP 300-16-2			M16							
JOCP 300-20-1	JOCP 300-20-2			M20							
JOCP 400-12-1	JOCP 400-12-2	750Kcmil	400	M12	49	54	44	26	34	Black 106	10
JOCP 400-16-1	JOCP 400-16-2			M16							
JOCP 400-20-1	JOCP 400-20-2			M20							

## TUBULAR CABLE LUGS, TWO-HOLE, ROUND COMPRESSED TYPE-CP (동관단자)

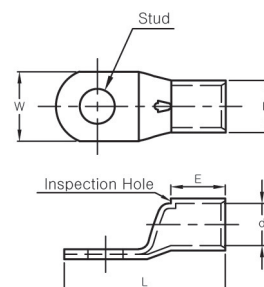
- Material : Electrolytic Copper (TPC)
- Surface : Tin Plated
- With Inspection Hole
- Color Coded to Show Proper Die Number and Color 6mm<sup>2</sup>~1000mm<sup>2</sup>
- To IEC 60228 Class 2
- UL Listed 486A-486B up to 35KV



Part Number	Wire Range		Stud Size	Dimension (mm)						Code Cable Die Color & No.	Q'ty / bag
	AWG	mm <sup>2</sup>		W	A	d	D	E	L		
JOCP 6-2	12~10	6	M5	9	22.5	4.0	5.5	14	53.5	-	1000
JOCP 10-2	8	10	M6	10	22.5	4.7	6.7	15	58.5	Red21	500
JOCP 16-2	6	16	M6	12	22.5	5.4	7.4	23	67.5	Blue24	300
JOCP 25-2	4	25	M8	14	22.5	6.7	9.0	23	71.5	Gray29	200
JOCP 35-2	2	35	M8	16	22.5	8.1	10.6	26	75.5	Brown33	100
JOCP 50-2	1	50	M10	18	22.5	9.5	12	30.5	85	Green37	100
JOCP 70-2	2/0	70	M12	22	45	11.3	14.6	32	115	Black45	50
JOCP 95-2	3/0	95	M12	25	45	13.5	17	38	125	Orange50	50
JOCP 120-2	250Kcmil	120	M12	28	45	15.2	19	43	130	Purple54	50
JOCP 150-2	300Kcmil	150	M12	31	45	17	21	46	135	Yellow62	30
JOCP 185-2	350Kcmil	185	M12	35	45	19	23.5	48	142	Red71	25
JOCP 240-2	500Kcmil	240	M12	40	45	22	27.4	59	149	Brown87	15
JOCP 300-2	600Kcmil	300	M12	45	45	24	30.5	68	163	Green94	10
JOCP 400-2	750Kcmil	400	M14	49	45	26	34	71	177	Black106	8
JOCP 500-2	1000Kcmil	500	M14	58	45	31	40	74	188	White125	8
JOCP 630-2	1250Kcmil	630	M16	64.5	45	34	45	81	211	Pink142	5
JOCP 800-2	1600Kcmil	800	M16	72	45	39	50.6	100	232	Orange150	5
JOCP 1000-2	2000Kcmil	1000	M16	80	45	43	56.2	102	245	Green194	5

## CODE CONDUCTOR, ONE-HOLE, STANDARD BARREL LUG TYPE-CO (동관단자)

- Material : Electrolytic Copper(TPC)
- Surface : Tin Plated
- With Inspection Hole
- To IEC 60228 Class 2
- UL Listed 486A-486B up to 35KV

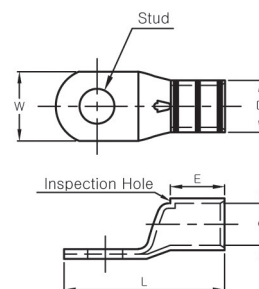


Part Number	Wire Range		Stud Size	Dimension (mm)					Q'ty / Box
	AWG	mm <sup>2</sup>		W	d	D	E	L	
JOCO 0151-RS03	20~16	1.5	M3	6.5	1.8	3.3	6	15.3	1,000
JOCO 0151-RS04			M4					17	
JOCO 0151-RS05			M5	7.5				18.8	
JOCO 0151-RS06			M6	9				22.5	
JOCO 0125-RS03	16~14	2.5	M3	7.5	2.3	4.2	7	16.3	1,000
JOCO 0125-RS04			M4					18	
JOCO 0125-RS05			M5	8.5				19.8	
JOCO 0125-RS06			M6	9.5				23.5	
JOCO 0125-RS08			M8	15				28.8	
JOCO 0140-RS04	14~12	4	M4	8.5	3	5.0	8	22.8	1,000
JOCO 0140-RS05			M5	9				25.5	
JOCO 0140-RS06			M6	10				30.5	
JOCO 0140-RS08			M8	15					
JOCO 0160-RS04	12~10	6	M4	9.5	4	6.0	9	23	500
JOCO 0160-RS05			M5					25	
JOCO 0160-RS06			M6	10				26	
JOCO 0160-RS08			M8	15				30.5	
JOCO 0160-RS10			M10						

## CODE CONDUCTOR, ONE-HOLE, STANDARD BARREL AND LONG BARREL LUG

### TYPE-CO (동관단자)

- Material : Electrolytic Copper (TPC)
- Surface : Tin Plated
- With Inspection Hole
- Color Coded to Show Proper Die Number and Color 10mm<sup>2</sup>~630mm<sup>2</sup>
- To IEC 60228 Class2
- UL Listed 486A-486B up to 35KV



Part No Explanation : JOCO 0101-X X 04 → Stud Size(mm, UNC)

Tongue Form R : Round Type  
S : Square Type

Barrel Form \*S : Standard Barrel Type  
\*L : Long Barrel Type



Part Number	Wire Range		Stud Size	Dimension (mm)						Color Code & Die No	Q' ty/Box		
				W	d	D	E		L				
	AWG	mm²					*S	*L	*S	*L	XS(Type)	XL(Type)	
JOCO 0101-XX05	8	10	M5	9.5	4.7	6.7	15	21	33	39	Red 21 JOC D-8	500	300
JOCO 0101-XX06			M6										
JOCO 0101-XX08			M8	15					39	45		300	
JOCO 0101-XX10			M10										
JOCO 0101-XX12			M12	18					43	49		250	
JOCO 0102-XX05	6	16	M5	12	5.4	7.4	15	21	33	39	Blue 24 JOC D-6	300	300
JOCO 0102-XX06			M6										
JOCO 0102-XX08			M8	15.5					39	45		200	
JOCO 0102-XX10			M10										
JOCO 0102-XX12			M12	18					43	49			
JOCO 0103-XX05	4	25	M5	13	6.7	9.0	17	23	40	46	Gray 29 JOC D-4	200	150
JOCO 0103-XX06			M6										
JOCO 0103-XX08			M8	15.5					44	50			
JOCO 0103-XX10			M10										
JOCO 0103-XX12			M12	18									
JOCO 0104-XX05	2	35	M5	16	8.1	10.6	19.5	26	45.5	52	Brown 33 JOC D-2	150	100
JOCO 0104-XX06			M6										
JOCO 0104-XX08			M8	18					50	56			
JOCO 0104-XX10			M10										
JOCO 0104-XX12			M12	18									
JOCO 0105-XX05	1	50	M5	18	9.5	12	20	35	50	65	Green 37 JOC D-1	100	100
JOCO 0105-XX06			M6										
JOCO 0105-XX08			M8										
JOCO 0105-XX10			M10										
JOCO 0105-XX12			M12										
JOCO 0105-XX16			M16	23					56	71			50



## CODE CONDUCTOR, ONE-HOLE, STANDARD BARREL AND LONG BARREL LUG TYPE-CO (동관단자)

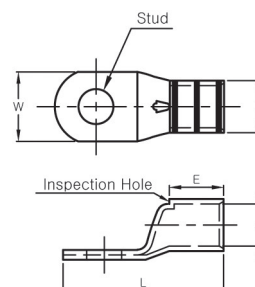
- Material : Electrolytic Copper (TPC)
- Surface : Tin Plated
- With Inspection Hole
- Color Coded to Show Proper Die Number  
and Color 10mm~630mm
- To IEC 60228 Class 2
- UL Listed 486A-486B up to 35KV



Part Number	Wire Range		Stud Size	Dimension (mm)						Color Code & Die No	Q' ty/Box		
				W	d	D	E		L				
	*S	*L					*S	*L					
JOCO 0106-XX05	1/0	60	M5	19	10.2	13.2	20	35	52	67	Pink 42 J OCD-1/0	100	50
JOCO 0106-XX06			M6										
JOCO 0106-XX08			M8										
JOCO 0106-XX10			M10										
JOCO 0106-XX12			M12										
JOCO 0106-XX16			M16	24					58	73			
JOCO 0107-XX08	2/0	70	M8	21	11.3	14.6	21.5	35	54	67	Black 45 J OCD-2/0	80	50
JOCO 0107-XX10			M10										
JOCO 0107-XX12			M12										
JOCO 0107-XX16			M16	25					57	70			
JOCO 0108-XX08	3/0	95	M8	25	13.5	17	24	40	64	80	Orange 48 J OCD-3/0	50	40
JOCO 0108-XX10			M10										
JOCO 0108-XX12			M12										
JOCO 0108-XX16			M16										
JOCO 0109-XX08	4/0	100	M8	26	14	18	30	40	70	80	Orange 50 J OCD-4/0	40	30
JOCO 0109-XX10			M10										
JOCO 0109-XX12			M12										
JOCO 0109-XX16			M16										
JOCO 0110-XX08	250 Kcmil	120	M8	28	15.2	19	30	49	70	89.5	Purple 54 J OCD-250	40	30
JOCO 0110-XX10			M10										
JOCO 0110-XX12			M12										
JOCO 0110-XX16			M16										
JOCO 0111-XX08	300 Kcmil	150	M8	31	17	21	30	49	73	92.5	Yellow 62 J OCD-300	30	20
JOCO 0111-XX10			M10										
JOCO 0111-XX12			M12										
JOCO 0111-XX16			M16										
JOCO 0112-XX10	350 Kcmil	185	M10	35	19	23.5	35	50	78	93	Red 71 J OCD-350	25	20
JOCO 0112-XX12			M12										
JOCO 0112-XX16			M16										
JOCO 0112-XX20			M20						82	97			

## CODE CONDUCTOR, ONE-HOLE, STANDARD BARREL AND LONG BARREL LUG TYPE-CO (동관단자)

- Material : Electrolytic Copper (TPC)
- Surface : Tin Plated
- With Inspection Hole
- Color Coded to Show Proper Die Number and Color 10mm~630mm
- To IEC 60228 Class 2
- UL Listed 486A-486B up to 35KV



Part No Explanation : JOCO 0101-X X 04 → Stud Size(mm, UNC)

Tongue Form R : Round Type  
S : Square Type

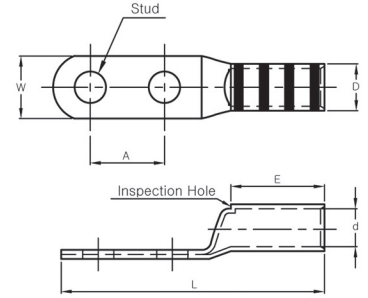
Barrel Form \*S : Standard Barrel Type  
\*L : Long Barrel Type



Part Number	Wire Range		Stud Size	Dimension (mm)						Color Code & Die No	Q' ty/Box		
	AWG	mm²		W	d	D	E		L		XS(Type)	XL(Type)	
							*S	*L	*S	*L			
JOCO 0113-XX10	400 Kcmil	200	M10	37.5	21	26	39	50	90	100	Blue 76 JOCD-400	15	10
JOCO 0113-XX12			M12										
JOCO 0113-XX16			M16										
JOCO 0113-XX20			M20						92	102			
JOCO 0114-XX10	500 Kcmil	240	M10	40	22	27.4	40	57	92	109	Brown 87 JOCD-500	15	10
JOCO 0114-XX12			M12										
JOCO 0114-XX16			M16										
JOCO 0114-XX20			M20						104	121			
JOCO 0114-XX24			M24										
JOCO 0115-XX10	600 Kcmil	300	M10	45	24	30.5	45	68	101	124	Green 94 JOCD-600	10	8
JOCO 0115-XX12			M12										
JOCO 0115-XX16			M16										
JOCO 0115-XX20			M20										
JOCO 0115-XX24			M24						107	130			
JOCO 0116-XX12	750 Kcmil	400	M12	49	27	35	48	73	110	135	Black 106 JOCD-940-750	4	4
JOCO 0116-XX16			M16										
JOCO 0116-XX20			M20										
JOCO 0116-XX24			M24						111	136			
JOCO 0117-XX12	1000 Kcmil	500	M12	57.5	31	40	50	76	130	156	White 125 JOCD-940-1000	3	3
JOCO 0117-XX16			M16										
JOCO 0117-XX20			M20										
JOCO 0117-XX24			M24										
JOCO 0118-XX12	1250 Kcmil	630	M12	64	34	45	54	79	140	165	Pink 142 JOCD-1000-1250	2	2
JOCO 0118-XX16			M16										
JOCO 0118-XX20			M20										
JOCO 0118-XX24			M24										

## CODE CONDUCTOR, TWO-HOLE, STANDARD BARREL AND LONG BARREL LUG TYPE-CT (동관단자)

- Material : Electrolytic Copper (TPC)
- Surface : Tin Plated
- With Inspection Hole
- Color Coded to Show Proper Die Number and Color 10mm~630mm
- To IEC 60228 Class 2
- UL Listed 486A-486B up to 35KV



Part No Explanation : JOCT 0201-X X 04 → Stud Size(mm, UNC)

Tongue Form R : Round Type  
S : Square Type

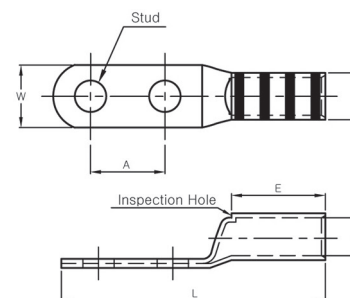
Barrel Form \*S : Standard Barrel Type  
\*L : Long Barrel Type



Part Number	Wire Range		Stud Size	Dimension (mm)								Color Code & Die No	Q' ty/Box							
	AWG	mm <sup>2</sup>		W	d	D	A	E		L			XS(Type)	XL(Type)						
								*S	*L	*S	*L									
JOCT 0201-XX05	8	10	M5	9.5	4.7	6.7	16	15	30	52	67	Red 21 JOCD-8	300	150						
JOCT 0201-XX06			M6				15			19					67		82			
JOCT 0201-XX08			M8	200																
JOCT 0201-XX10			M10																	
JOCT 0201-XX12			M12	18			22			70	85									
JOCT 0202-XX05	6	16	M5	12	5.4	7.4	16	15	30	52	67	Blue 24 JOCD-6	150	150						
JOCT 0202-XX06			M6				15.5			19					67		82			
JOCT 0202-XX08			M8																	
JOCT 0202-XX10			M10																	
JOCT 0202-XX12			M12	18			22			70	85									
JOCT 0203-XX05	4	25	M5	14	6.7	9.0	16	17	33	54	70	Gray 29 JOCD-4	200	100						
JOCT 0203-XX06			M6				15.5			19					70		86			
JOCT 0203-XX08			M8	150																
JOCT 0203-XX10			M10																	
JOCT 0203-XX12			M12	18			22			73	89									
JOCT 0204-XX05	2	35	M5	16	8.1	10.6	19	19.5	33	62	75	Brown 33 JOCD-2	100	100						
JOCT 0204-XX06			M6				18			22					72		85			
JOCT 0204-XX08			M8																	
JOCT 0204-XX10			M10																	
JOCT 0204-XX12			M12	18			22			75	88		50							
JOCT 0205-XX05	1	50	M5	18	9.5	12	44.5	19.5	35	97	112	Green 37 JOCD-1	50	50						
JOCT 0205-XX06			M6																	
JOCT 0205-XX08			M8																	
JOCT 0205-XX10			M10																	
JOCT 0205-XX12			M12																	
JOCT 0205-XX16			M16	23																

## CODE CONDUCTOR, TWO-HOLE, STANDARD BARREL AND LONG BARREL LUG TYPE-CT (동관단자)

- Material : Electrolytic Copper (TPC)
- Surface : Tin Plated
- With Inspection Hole
- Color Coded to Show Proper Die Number and Color 10mm~630mm
- To IEC 60228 Class 2
- UL Listed 486A-486B up to 35KV



Part No Explanation : JOCT 0201-X X 04 → Stud Size(mm, UNC)

Tongue Form R : Round Type  
S : Square Type

Barrel Form \*S : Standard Barrel Type  
\*L : Long Barrel Type



Part Number	Wire Range		Stud Size	Dimension (mm)								Color Code & Die No	Q' ty/Box	
				W	d	D	A	E		L				
	*S	*L						*S	*L					
JOCT 0206-XX05	1/0	60	M5	19	10.2	13.2	44.5	20	37	100	117	Pink 42 JOCD-1/0	50	50
JOCT 0206-XX06			M6											
JOCT 0206-XX08			M8											
JOCT 0206-XX10			M10	21										
JOCT 0206-XX12			M12											
JOCT 0206-XX16			M16											
JOCT 0207-XX08	2/0	70	M8	21	11.3	14.6	44.5	22	45	105	128	Black 45 JOCD-2/0	50	40
JOCT 0207-XX10			M10											
JOCT 0207-XX12			M12											
JOCT 0207-XX16			M16	25						111	130			
JOCT 0208-XX08	3/0	95	M8	25	13.5	17	44.5	30	45	115	130	Orange 48 JOCD-3/0	30	30
JOCT 0208-XX10			M10											
JOCT 0208-XX12			M12											
JOCT 0208-XX16			M16							118	133			
JOCT 0209-XX08	4/0	100	M8	26	14	18	44.5	30	47	118	135	Orange 50 JOCD-4/0	30	25
JOCT 0209-XX10			M10											
JOCT 0209-XX12			M12											
JOCT 0209-XX16			M16							124	136			
JOCT 0210-XX08	250Kcmil	120	M8	28	15.2	19	44.5	30	49	117	136.5	Purple 54 JOCD-250	25	25
JOCT 0210-XX10			M10											
JOCT 0210-XX12			M12											
JOCT 0210-XX16			M16							120	140			
JOCT 0211-XX08	300Kcmil	150	M8	32	17	21	44.5	30	49	120	140	Yellow 62 JOCD-300	20	15
JOCT 0211-XX10			M10											
JOCT 0211-XX12			M12											
JOCT 0211-XX16			M16											

## CODE CONDUCTOR, TWO-HOLE, STANDARD BARREL AND LONG BARREL LUG TYPE-CT (동관단자)

- Material : Electrolytic Copper (TPC)
- Surface : Tin Plated
- With Inspection Hole
- Color Coded to Show Proper Die Number  
and Color 10mm~630mm
- To IEC 60228 Class 2
- UL Listed 486A-486B up to 35KV

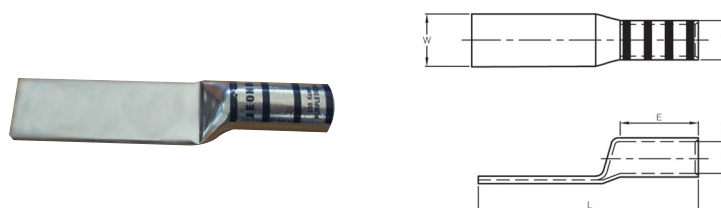


Part Number	Wire Range		Stud Size	Dimension (mm)								Color Code & Die No	Q' ty/ Box	
	AWG	mm²		W	d	D	A	E		L			XS(Type)	XL(Type)
								*S	*L	*S	*L			
JOCT 0212-XX10	350Kcmil	185	M10	35	19	23.5	44.5	35	50	129	144	Red 71 JOCD-350	15	10
JOCT 0212-XX12			M12											
JOCT 0212-XX16			M16											
JOCT 0212-XX20			M20											
JOCT 0213-XX10	400Kcmil	200	M10	37.5	21	26	44.5	40	57	138	155	Blue 76 JOCD-400	10	8
JOCT 0213-XX12			M12											
JOCT 0213-XX16			M16											
JOCT 0213-XX20			M20											
JOCT 0214-XX10	500Kcmil	240	M10	40	22	27.4	44.5	40	57	142	159	Brown 87 JOCD-500	10	8
JOCT 0214-XX12			M12											
JOCT 0214-XX16			M16							147	162			
JOCT 0214-XX20			M20											
JOCT 0214-XX24			M24											
JOCT 0215-XX10	600Kcmil	300	M10	45	24	30.5	44.5	44.5	67	146.5	169	Green 94 JOCD-600	8	6
JOCT 0215-XX12			M12											
JOCT 0215-XX16			M16											
JOCT 0215-XX20			M20											
JOCT 0215-XX24			M24											
JOCT 0216-XX12	750Kcmil	400	M12	50	27	35	44.5	48	72.5	150	175	Black 106 JOCD-940-750	4	4
JOCT 0216-XX16			M16											
JOCT 0216-XX20			M20											
JOCT 0216-XX24			M24											
JOCT 0217-XX12	1000Kcmil	500	M12	57.5	31	40	44.5	50	76	166	192	White 125 JOCD-940-1000	3	3
JOCT 0217-XX16			M16											
JOCT 0217-XX20			M20											
JOCT 0217-XX24			M24											
JOCT 0218-XX12	1250Kcmil	630	M12	64.5	34	45	44.5	54	79	175	200	Pink 142 JOCD-1000-1250	2	2
JOCT 0218-XX16			M16											
JOCT 0218-XX20			M20											
JOCT 0218-XX24			M24											

## CODE CONDUCTOR, BLANK TONGUE, LONG BARREL LUG

### TYPE – CT(B) (무홀동관단자)

- Material : Electrolytic Copper (TPC)
- Surface : Tin Plated
- Color Coded to Show Proper Die Number  
and Color 10mm<sup>2</sup>~630mm<sup>2</sup>
- To IEC 60228 Class 2
- UL Listed 486A-486B up to 35KV
- Without Inspection Hole



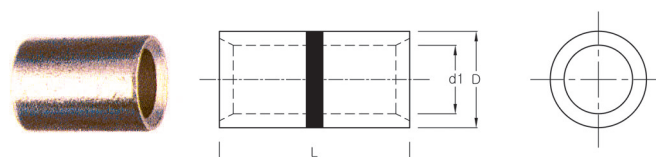
\* When ordering 45° or 90° bended product, refer to B12 page.



Part Number	Wire Range		Stud Size	Dimension (mm)					Color Code & Die No	Q'ty/ Box
	AWG	mm <sup>2</sup>		W	d	D	E	L		
JOCT 0201 – SL00T	8	10	–	10	4.7	6.7	19	56	Red 21, JOCD-8	150
JOCT 0202 – SL00T	6	16	–	12	5.4	7.4	25	62	Blue 24, JOCD-6	150
JOCT 0203 – SL00T	4	25	–	14	6.7	9.0	25	62	Gray 29, JOCD-4	150
JOCT 0204 – SL00T	2	35	–	16	8.1	10.6	30	82	Brown 33, JOCD-2	100
JOCT 0205 – SL00T	1	50	–	18	9.5	12	35	113	Green 37, JOCD-1	50
JOCT 0206 – SL00T	1/0	60	–	19	10.2	13.2	37	117	Pink 42, JOCD-1/0	50
JOCT 0207 – SL00T	2/0	70	–	22	11.3	14.6	37	120	Black 45, JOCD-2/0	40
JOCT 0208 – SL00T	3/0	95	–	25	13.5	17	40	125	Orange 48, JOCD-3/0	30
JOCT 0209 – SL00T	4/0	100	–	26	14	18	42	130	Orange 50, JOCD-4/0	25
JOCT 0210 – SL00T	250Kcmil	120	–	28	15.2	19	42	129	Purple 54, JOCD-250KCM	25
JOCT 0211 – SL00T	300Kcmil	150	–	32	17	21	56	146	Yellow 62, JOCD-300KCM	15
JOCT 0212 – SL00T	350Kcmil	185	–	35	19	23.5	56	150	Red 71, JOCD-350KCM	10
JOCT 0213 – SL00T	400Kcmil	200	–	37.5	21	26	58	157	Blue 76, JOCD-400KCM	8
JOCT 0214 – SL00T	500Kcmil	240	–	40	22	27.4	63	165	Brown 87, JOCD-500KCM	8
JOCT 0215 – SL00T	600Kcmil	300	–	45	24	30.5	68	170	Green 94, JOCD-600KCM	6
JOCT 0216 – SL00T	750Kcmil	400	–	50	27	35	73	175	Black 106, JOCD-750KCM	4
JOCT 0217 – SL00T	1000Kcmil	500	–	57.5	31	40	76	192	White 125, JOCD-1000KCM	3
JOCT 0218 – SL00T	1250Kcmil	630	–	64	34	45	80	201	Pink 142, JOCD-1250KCM	2

## CODE CONDUCTOR, BUTT-SPLICE, SHORT BARREL TYPE-S (슬리브)

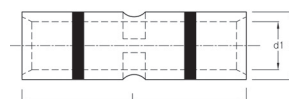
- Material : Electrolytic Copper (TPC)
- Surface : Tin Plated
- Color Stripe to Identifi Wire Range 1.5mm<sup>2</sup>~6mm<sup>2</sup>
- Color Coded to Show Proper Die Number and Color 10mm<sup>2</sup>~150mm<sup>2</sup>
- To IEC 60228 Class 2
- UL Listed 486A-486B up to 35KV



Part Number	Wire Range		Color Code & Die No	Dimension(mm)			Q' ty/bag
	AWG	mm <sup>2</sup>		d <sub>1</sub>	D	L	
JS 015	20~16	1.5	Red	2.0	3.0	7.5	2,000
JS 025	16~14	2.5	Blue	2.5	3.5	7.5	2,000
JS 4	14~12	4	Brown	3.2	4.5	7.5	2,000
JS 6	12~10	6	Yellow	4.0	5.5	7.5	2,000
JS 10	8	10	Red	4.7	6.7	15	500
JS 16	6	16	Blue	5.4	7.4	17	300
JS 25	4~3	25	Gray	6.7	9.0	20	300
JS 35	2	35	Brown	8.1	10.6	23	200
JS 50	1	50	Green	9.5	12.0	25	100
JS 60	1/0	60	Pink	10.2	13.2	25	100
JS 70	2/0	70	Black	11.3	14.6	30	100
JS 95	3/0	95	Orange	13.5	17	33	50
JS 100	4/0	100	Orange	14	18	33	50
JS 120	250Kcmil	120	Purple	15.2	19	35	70
JS 150	300Kcmil	150	Yellow	17	21	35	40

## CODE CONDUCTOR, BUTT-SPLICE, STANDARD BARREL TYPE-SS (슬리브)

- Material : Electrolytic Copper (TPC)
- Surface : Tin Plated
- Internal Wirestop to Prevent Over Insertion of Cable
- Color Stripe to Identifi Wire Range 1.5mm<sup>2</sup>~6mm<sup>2</sup>
- Color Coded to Show Proper Die Number and Color 10mm<sup>2</sup>~630mm<sup>2</sup>
- To IEC 60228 Class 2
- UL Listed 486A-486B up to 35KV



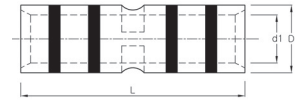
Part Number	Wire Range		Color Code & Die No	Dimension(mm)			Q' ty/bag
	AWG	mm <sup>2</sup>		d <sub>1</sub>	D	L	
JSS 015	20~16	1.5	Red	2.0	3.0	15	1,000
JSS 025	16~14	2.5	Blue	2.5	3.5	15	1,000
JSS 4	14~12	4	Brown	3.2	4.5	20	1,000
JSS 6	12~10	6	Yellow	4.0	5.5	20	1,000
JSS 10	8	10	Red 21	4.7	6.7	30	500
JSS 16	6	16	Blue 24	5.4	7.4	35	300
JSS 25	4~3	25	Gray 29	6.7	9.0	40	300
JSS 35	2	35	Brown 33	8.1	10.6	45	200
JSS 50	1	50	Green 37	9.5	12.0	50	100
JSS 60	1/0	60	Pink 42	10.2	13.2	50	100
JSS 70	2/0	70	Black 45	11.3	14.6	51	100
JSS 95	3/0	95	Orange 50	13.5	17	54	50
JSS 100	4/0	100	Orange 50	14	18	54	50
JSS 120	250Kcmil	120	Purple 54	15.2	19	57	70
JSS 150	300Kcmil	150	Yellow 62	17	21	57	40
JSS 185	350Kcmil	185	Red 71	19	23.5	60	35
JSS 200	400Kcmil	200	Blue 76	21	26	60	30
JSS 240	500Kcmil	240	Brown 87	22	27.4	73	20
JSS 300	600Kcmil	300	Green 94	24	30.5	73	20
JSS 400	800Kcmil	400	Black 106	26	34	86	10
JSS 500	1000Kcmil	500	White 125	31	40	98	10
JSS 630	1250Kcmil	630	Pink 142	34	45	108	5



## CODE CONDUCTOR, BUTT-SPLICE, LONG BARREL

### TYPE-SL (슬리브)

- Material : Electrolytic Copper (TPC)
- Surface : Tin Plated
- Internal Wirestop to Prevent Over Insertion of Cable
- Color Stripe to Identifi Wire Range 1.5mm<sup>2</sup>~6mm<sup>2</sup>
- Color Coded to Show Proper Die Number and Color 10mm<sup>2</sup>~800mm<sup>2</sup>
- To IEC 60228 Class 2
- UL Listed 486A-486B up to 35KV

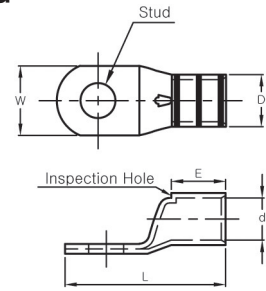


B

Part Number	Wire Range		Color Code & Die No	Dimension(mm)			Q' ty/bag
	AWG	mm <sup>2</sup>		d <sub>1</sub>	D	L	
JSL 015	20~16	1.5	Red	2.0	3.0	25	1,000
JSL 025	16~14	2.5	Blue	2.5	3.5	25	1,000
JSL 4	14~12	4	Brown	3.2	4.5	25	1,000
JSL 6	12~10	6	Yellow	4.0	5.5	25	1,000
JSL 10	8	10	Red 21	4.7	6.7	57	500
JSL 16	6	16	Blue 24	5.4	7.4	61	300
JSL 25	4~3	25	Gray 29	6.7	9.0	61	200
JSL 35	2	35	Brown 33	8.1	10.6	67	100
JSL 50	1	50	Green 37	9.5	12.0	73	100
JSL 60	1/0	60	Pink 42	10.2	13.2	73	100
JSL 70	2/0	70	Black 45	11.3	14.6	78	50
JSL 95	3/0	95	Orange 50	13.5	17	78	40
JSL 100	4/0	100	Orange 50	14	18	78	40
JSL 120	250Kcmil	120	Purple 54	15.2	19	86	35
JSL 150	300Kcmil	150	Yellow 62	17	21	105	30
JSL 185	350Kcmil	185	Red 71	19	23.5	111	20
JSL 200	400Kcmil	200	Blue 76	21	26	111	20
JSL 240	500Kcmil	240	Brown 87	22	27.4	117	15
JSL 300	600Kcmil	300	Green 94	24	30.5	140	10
JSL 400	800Kcmil	400	Black 106	26	34	149	5
JSL 500	1000Kcmil	500	White 125	31	40	155	4
JSL 630	1250Kcmil	630	Pink 142	34	45	165	4
JSL 800	1600Kcmil	800	Orange 150	39	50.6	196	3

## FLEX CONDUCTOR, ONE-HOLE, STANDARD BARREL AND LONG BARREL LUG TYPE-FCO (플렉서블 전선용 동관단자)

- Material : Electrolytic Copper (TPC)
- Surface : Tin Plated
- With Inspection Hole
- Color Coded to Show Proper Die Number and Color 10mm~500mm
- To IEC 60228 Class 5
- UL Listed 486A-486B up to 35KV



Part No Explanation : JFCO 0101-X X 04 → Stud Size(mm, UNC)

Tongue Form R : Round Type  
S : Square Type

Barrel Form \*S : Standard Barrel Type  
\*L : Long Barrel Type



Part Number	Wire Range		Stud Size	Dimension (mm)						Color Code & Die No	Q' ty/Box		
	AWG	mm²		W	d	D	E		L		XS(Type)	XL(Type)	
							*S	*L	*S				*L
JFCO 0102-XX05	8	10	M5	12	5.4	7.4	15	21	33	39	Blue 24 JHCD-6	300	200
JFCO 0102-XX06			M6										
JFCO 0102-XX08			M8										
JFCO 0102-XX10			M10										
JFCO 0102-XX12			M12	18					43	49			
JFCO 0103-XX05	6	16	M5	13	6.7	9.0	17	23	40	46	Gray 29 JHCD-4	200	150
JFCO 0103-XX06			M6										
JFCO 0103-XX08			M8										
JFCO 0103-XX10			M10	15.5					44	50			
JFCO 0103-XX12			M12	18									
JFCO 0104-XX05	4	25	M5	16	8.1	10.6	19.5	26	45.5	52	Brown 33 JHCD-2	150	100
JFCO 0104-XX06			M6										
JFCO 0104-XX08			M8										
JFCO 0104-XX10			M10										
JFCO 0104-XX12			M12	18					50	56			
JFCO 0105-XX05	2	35	M5	18	9.5	12	20	35	50	65	Green 37 JHCD-1	100	70
JFCO 0105-XX06			M6										
JFCO 0105-XX08			M8										
JFCO 0105-XX10			M10										
JFCO 0105-XX12			M12										
JFCO 0105-XX16			M16	23					56	71			50
JFCO 0106-XX05	1	50	M5	19	10.2	13.2	20	35	52	67	Pink 42 JHCD-1/0	100	50
JFCO 0106-XX06			M6										
JFCO 0106-XX08			M8										
JFCO 0106-XX10			M10										
JFCO 0106-XX12			M12										
JFCO 0106-XX16			M16	24					58	73			

## FLEX CONDUCTOR, ONE-HOLE, STANDARD BARREL AND LONG BARREL LUG TYPE-FCO (플렉서블 전선용 동관단자)

- Material : Electrolytic Copper (TPC)
- Surface : Tin Plated
- With Inspection Hole
- Color Coded to Show Proper Die Number and Color 10mm<sup>2</sup>~500mm<sup>2</sup>
- To IEC 60228 Class 5
- UL Listed 486A-486B up to 35KV

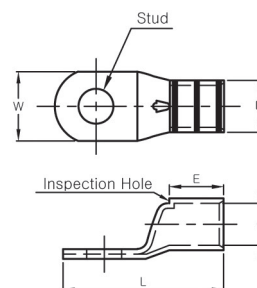
B



Part Number	Wire Range		Stud Size	Dimension (mm)						Color Code & Die No	Q' ty/Box		
	AWG	mm²		W	d	D	E		L		XS(Type)	XL(Type)	
							*S	*L	*S	*L			
JFCO 0107-XX08	1/0	60	M8	21	11.3	14.6	21.5	35	54	67	Black 45 JHCD-2/0	80	50
JFCO 0107-XX10			M10										
JFCO 0107-XX12			M12										
JFCO 0107-XX16			M16	25					57	70			
JFCO 0108-XX08	2/0	70	M8	25	13.5	17	24	40	64	80	Orange 48 JHCD-3/0	50	40
JFCO 0108-XX10			M10										
JFCO 0108-XX12			M12										
JFCO 0108-XX16			M16										
JFCO 0110-XX08	3/0	95	M8	28	15	19	30	49	70	89.5	Purple 54 JHCD-250	40	40
JFCO 0110-XX10			M10										
JFCO 0110-XX12			M12										
JFCO 0110-XX16			M16										
JFCO 0111-XX08	250 Kcmil	120	M8	32	17	21	30	49	73	92.5	Yellow 62 JHCD-300	30	20
JFCO 0111-XX10			M10										
JFCO 0111-XX12			M12										
JFCO 0111-XX16			M16										
JFCO 0112-XX10	300 Kcmil	150	M10	35	19	23.5	35	50	78	93	Red 71 JHCD-350	25	20
JFCO 0112-XX12			M12										
JFCO 0112-XX16			M16										
JFCO 0112-XX20			M20						82	97			
JFCO 0113-XX10	350 Kcmil	185	M10	37.5	21	26	39	50	90	100	Blue 76 JHCD-400	15	10
JFCO 0113-XX12			M12										
JFCO 0113-XX16			M16										
JFCO 0113-XX20			M20						92	102			

## FLEX CONDUCTOR, ONE-HOLE, STANDARD BARREL AND LONG BARREL LUG TYPE-FCO (플렉서블 전선용 동관단자)

- Material : Electrolytic Copper (TPC)
- Surface : Tin Plated
- With Inspection Hole
- Color Coded to Show Proper Die Number and Color 10mm<sup>2</sup>~500mm<sup>2</sup>
- To IEC 60228 Class 5
- UL Listed 486A-486B up to 35KV



Part No Explanation : JFCO 0101-X X 04 → Stud Size(mm, UNC)

Tongue Form R : Round Type  
S : Square Type

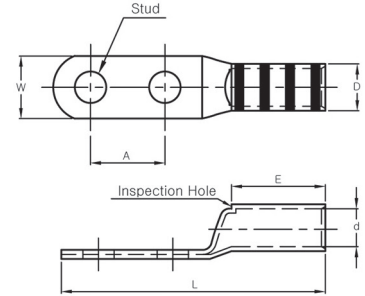
Barrel Form \*S : Standard Barrel Type  
\*L : Long Barrel Type



Part Number	Wire Range		Stud Size	Dimension (mm)						Color Code & Die No	Q' ty/Box		
	AWG	mm²		W	d	D	E		L		XS(Type)	XL(Type)	
							*S	*L	*S	*L			
JFCO 0114-XX10	400 Kcmil	200	M10	40	22	27.4	40	57	92	109	Brown 87 JHCD-500	15	10
JFCO 0114-XX12			M12										
JFCO 0114-XX16			M16										
JFCO 0114-XX20			M20										
JFCO 0114-XX24			M24										
JFCO 0115-XX10	500 Kcmil	240	M10	45	24	30.5	45	68	101	124	Green 94 JHCD-600	10	5
JFCO 0115-XX12			M12										
JFCO 0115-XX16			M16										
JFCO 0115-XX20			M20										
JFCO 0115-XX24			M24										
JFCO 0116-XX12	600 Kcmil	300	M12	49	27	35	48	73	110	135	Black 106 JHCD-940-750	6	4
JFCO 0116-XX16			M16										
JFCO 0116-XX20			M20										
JFCO 0116-XX24			M24										
JFCO 0117-XX12	750 Kcmil	400	M12	57.5	31	40	50	76	130	156	White 125 JHCD-940-1000	4	3
JFCO 0117-XX16			M16										
JFCO 0117-XX20			M20										
JFCO 0117-XX24			M24										
JFCO 0118-XX12	1000 Kcmil	500	M12	64	34	45	54	79	140	165	Pink 142 JHCD-1000-1250	3	2
JFCO 0118-XX16			M16										
JFCO 0118-XX20			M20										
JFCO 0118-XX24			M24										

## FLEX CONDUCTOR, TWO-HOLE, STANDARD BARREL AND LONG BARREL LUG TYPE-FCT (플렉서블 전선용 동관단자)

- Material : Electrolytic Copper (TPC)
- Surface : Tin Plated
- With Inspection Hole
- Color Coded to Show Proper Die Number and Color 10mm<sup>2</sup>~500mm<sup>2</sup>
- To IEC 60228 Class 5
- UL Listed 486A-486B up to 35KV



Part No Explanation : JFCT 0201-X X 04 → Stud Size(mm, UNC)

Tongue Form R : Round Type  
S : Square Type

Barrel Form \*S : Standard Barrel Type  
\*L : Long Barrel Type

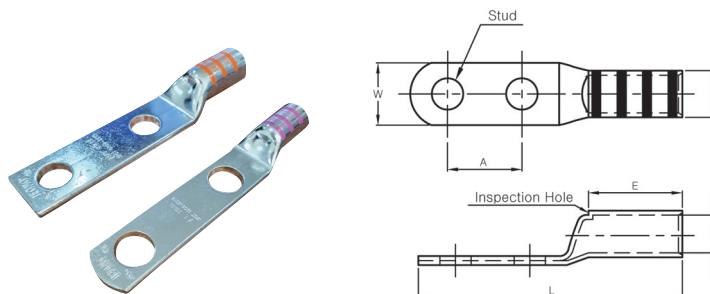


B

Part Number	Wire Range		Stud Size	Dimension (mm)								Color Code & Die No	Q' ty/Box	
	AWG	mm²		W	d	D	A	E		L			XS(Type)	XL(Type)
								*S	*L	*S	*L			
JFCT 0202-XX05	8	10	M5	12	5.4	7.4	16	15	30	52	67	Blue 24 JHCD-6	300	150
JFCT 0202-XX06			M6											
JFCT 0202-XX08			M8	22			70			85				
JFCT 0202-XX10			M10											
JFCT 0202-XX12			M12											
JFCT 0203-XX05	6	16	M5	14	6.7	9.0	16	17	33	54	70	Gray 29 JHCD-4	200	150
JFCT 0203-XX06			M6											
JFCT 0203-XX08			M8	22			73			89				
JFCT 0203-XX10			M10											
JFCT 0203-XX12			M12											
JFCT 0204-XX05	4	25	M5	16	8.1	10.6	19	19.5	33	71.5	75	Brown 33 JHCD-2	100	100
JFCT 0204-XX06			M6											
JFCT 0204-XX08			M8	22			75			88				
JFCT 0204-XX10			M10											
JFCT 0204-XX12			M12											
JFCT 0205-XX05	2	35	M5	18	9.5	12	44.5	19.5	35	97	112	Green 37 JHCD-1	50	50
JFCT 0205-XX06			M6											
JFCT 0205-XX08			M8											
JFCT 0205-XX10			M10											
JFCT 0205-XX12			M12											
JFCT 0205-XX16			M16	23										
JFCT 0206-XX05	1	50	M5	19	10.2	13.2	44.5	20	37	100	117	Pink 42 JHCD-1/0	50	50
JFCT 0206-XX06			M6											
JFCT 0206-XX08			M8											
JFCT 0206-XX10			M10											
JFCT 0206-XX12			M12											
JFCT 0206-XX16			M16	21										

## FLEX CONDUCTOR, TWO-HOLE, STANDARD BARREL AND LONG BARREL LUG TYPE-FCT (플렉서블 전선용 동관단자)

- Material : Electrolytic Copper (TPC)
- Surface : Tin Plated
- With Inspection Hole
- Color Coded to Show Proper Die Number and Color 10mm~500mm
- To IEC 60228 Class 5
- UL Listed 486A-486B up to 35KV



Part No Explanation : JFCT 0201-X X 04 → Stud Size(mm, UNC)

Tongue Form R : Round Type  
S : Square Type

Barrel Form \*S : Standard Barrel Type  
\*L : Long Barrel Type



Part Number	Wire Range		Stud Size	Dimension (mm)								Color Code & Die No	Q' ty/Box	
	AWG	mm²		W	d	D	A	E		L			XS(Type)	XL(Type)
								*S	*L	*S	*L			
JFCT 0207-XX08	1/0	60	M8	22	11.3	14.6	44.5	22	45	105	128	Black 45 JHCD-2/0	50	40
JFCT 0207-XX10			M10											
JFCT 0207-XX12			M12											
JFCT 0207-XX16			M16	25						111	130			
JFCT 0208-XX08	2/0	70	M8	25	13.5	17	44.5	30	45	115	130	Orange 48 JHCD-3/0	30	30
JFCT 0208-XX10			M10											
JFCT 0208-XX12			M12											
JFCT 0208-XX16			M16							112	136			
JFCT 0210-XX08	3/0	95	M8	28	15.2	19	44.5	30	49	117	136.5	Purple 54 JHCD-250	25	25
JFCT 0210-XX10			M10											
JFCT 0210-XX12			M12											
JFCT 0210-XX16			M16							120	140			
JFCT 0211-XX08	250Kcmil	120	M8	32	17	21	44.5	30	49	120	140	Yellow 62 JHCD-300	20	15
JFCT 0211-XX10			M10											
JFCT 0211-XX12			M12											
JFCT 0211-XX16			M16											
JFCT 0212-XX10	300Kcmil	150	M10	35	19	23.5	44.5	35	56	129	150	Red 71 JHCD-350	15	10
JFCT 0212-XX12			M12											
JFCT 0212-XX16			M16											
JFCT 0212-XX20			M20											
JFCT 0213-XX10	350Kcmil	185	M10	37.5	21	26	44.5	40	59	138	157	Blue 76 JHCD-400	10	8
JFCT 0213-XX12			M12											
JFCT 0213-XX16			M16											
JFCT 0213-XX20			M20											

## FLEX CONDUCTOR, TWO-HOLE, STANDARD BARREL AND LONG BARREL LUG TYPE-FCT (플렉서블 전선용 동관단자)

- Material : Electrolytic Copper (TPC)
- Surface : Tin Plated
- With Inspection Hole
- Color Coded to Show Proper Die Number and Color 10mm~500mm
- To IEC 60228 Class 5
- UL Listed 486A-486B up to 35KV

B

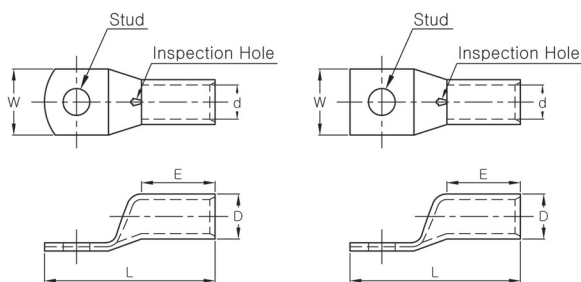


Part Number	Wire Range		Stud Size	Dimension (mm)								Color Code & Die No	Q' ty/Box	
				W	d	D	A	E		L				
	AWG	mm²						*S	*L	*S	*L		XS(Type)	XL(Type)
JFCT 0214-XX10	400Kcmil	200	M10	40	22	27.4	44.5	40	57	142	159	Brown 87 JHCD-500	10	8
JFCT 0214-XX12			M12											
JFCT 0214-XX16			M16											
JFCT 0214-XX20			M20											
JFCT 0214-XX24			M24							147	162			
JFCT 0215-XX10	500Kcmil	240	M10	45	24	30.5	44.5	44.5	67	146.5	169	Green 94 JHCD-600	8	6
JFCT 0215-XX12			M12											
JFCT 0215-XX16			M16											
JFCT 0215-XX20			M20											
JFCT 0215-XX24			M24											
JFCT 0216-XX12	600Kcmil	300	M12	50	27	35	44.5	48	72.5	150	175	Black 106 JHCD-940-750	4	4
JFCT 0216-XX16			M16											
JFCT 0216-XX20			M20											
JFCT 0216-XX24			M24											
JFCT 0217-XX12	750Kcmil	400	M12	57.5	31	40	44.5	50	76	166	192	White 125 JHCD-940-100	3	3
JFCT 0217-XX16			M16											
JFCT 0217-XX20			M20											
JFCT 0217-XX24			M24											
JFCT 0218-XX12	1000Kcmil	500	M12	64.5	34	45	44.5	54	79	170	200	Pink 142 JHCD-1000-1250	2	2
JFCT 0218-XX16			M16											
JFCT 0218-XX20			M20											
JFCT 0218-XX24			M24											

## HIGH VOLTAGE TUBULAR CABLE LUGS – ONE HOLE

### TYPE – HO (고전압용 동관단자)

- Material : Electrolytic Copper(TPC)
- Surface : Tin Plated
- With Inspection Hole
- To ICE 60228 Class 2 and Class 5



Round Type

Square Type

#### Part no. Explanation

JOHO 0102 - X 08

- Stud size(mm,UNC)
- Tongue Form R : Round type  
S : Square type
- Series Model No.
- Product part JOHO : One-hole type  
JOHT : Two-hole type

※ When ordering products refer to Part no. explanation



Part Number	Wire Range				Stud Size	Dimension (mm)					Color Code & Die No	Q'ty / Box
	CODE		FLEX			W	d	D	E	L		
	AWG	mm <sup>2</sup>	AWG	mm <sup>2</sup>								
JOHO 0102-X08	6	16	6	16	M8	21	5.5	9.5	21	52	Blue 24 JVCD-6	300
JOHO 0102-X10					M10							
JOHO 0102-X12					M12							
JOHO 0103-X08	4	25	4	25	M8	21	7.2	11.2	21	52	Gray 29 JVCD-4	200
JOHO 0103-X10					M10							
JOHO 0103-X12					M12							
JOHO 0104-X08	2	35	3	-	M8	21	8.8	13	26	57	Brown 33 JVCD-2	150
JOHO 0104-X10					M10							
JOHO 0104-X12					M12							
JOHO 0105-X08	1	50	2	35	M8	23	9.5	15	35	72	Green 37 JVCD-1	100
JOHO 0105-X10					M10							
JOHO 0105-X12					M12							
JOHO 0106-X08	1/0	60	1	50	M8	23	10.2	16	35	72	Pink 42 JVCD-1/0	100
JOHO 0106-X10					M10							
JOHO 0106-X12					M12							
JOHO 0107-X08	2/0	70	1/0	60	M8	23	11.2	17	40	80	Black 45 JVCD-2/0	80
JOHO 0107-X10					M10							
JOHO 0107-X12					M12							
JOHO 0107-X14					M14							
JOHO 0107-X16					M16							



## HIGH VOLTAGE TUBULAR CABLE LUGS – ONE HOLE

### TYPE – HO (고전압용 동관단자)

- Material : Electrolytic Copper(TPC)
- Surface : Tin Plated
- With Inspection Hole
- To ICE 60228 Class 2 and Class 5

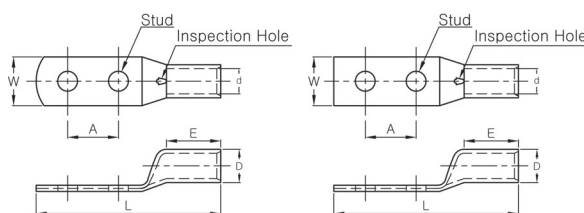


Part Number	Wire Range				Stud Size	Dimension (mm)					Color Code & Die No	Q' ty / Box
	CODE		FLEX			W	d	D	E	L		
	AWG	mm <sup>2</sup>	AWG	mm <sup>2</sup>								
JOHO 0108-X08	3/0	95	2/0	70	M8	27.5	13.3	20	40	85	Orange 48 JVCD-3/0	50
JOHO 0108-X10					M10							
JOHO 0108-X12					M12							
JOHO 0108-X14					M14							
JOHO 0108-X16					M16							
JOHO 0109-X08	4/0	100	3/0	95	M8	29	14	21	40	85	Orange 50 JVCD-4/0	40
JOHO 0109-X10					M10							
JOHO 0109-X12					M12							
JOHO 0109-X14					M14							
JOHO 0109-X16					M16							
JOHO 0110-X08	250	120	4/0	100	M8	30.5	15.2	22.2	48	94	Purple 54 JVCD-250	40
JOHO 0110-X10					M10							
JOHO 0110-X12					M12							
JOHO 0110-X14					M14							
JOHO 0110-X16					M16							
JOHO 0111-X08	300	150	250	120	M8	33	16.8	23.8	50	97	Yellow 62 JVCD-300	30
JOHO 0111-X10					M10							
JOHO 0111-X12					M12							
JOHO 0111-X14					M14							
JOHO 0111-X16					M16							
JOHO 0112-X08	350	185	300	150	M8	36	18.5	25.5	50	102	Red 71 JVCD-350	25
JOHO 0112-X10					M10							
JOHO 0112-X12					M12							
JOHO 0112-X14					M14							
JOHO 0112-X16					M16							

## HIGH VOLTAGE TUBULAR CABLE LUGS – TWO HOLE

### TYPE – HT (고전압용 동관단자)

- Material : Electrolytic Copper(TPC)
- Surface : Tin Plated
- With Inspection Hole
- To ICE 60228 Class 2 and Class 5



Round Type

Square Type

#### Part no. Explanation

JOHT 0202 - X 08

- JOHT : Two-hole type
- 0202 : Series Model No.
- X : Tongue Form
- 08 : Stud size(mm,UNC)

※ When ordering products refer to Part no. explanation



Part Number	Wire Range				Stud Size	Dimension (mm)						Color Code & Die No	Q'ty / Box
	CODE		FLEX			W	d	D	A	E	L		
	AWG	mm <sup>2</sup>	AWG	mm <sup>2</sup>									
JOHT 0202-X08	6	16	6	16	M8	21	5.5	9.5	44.5	30	112	Blue 24 JVCD-6	150
JOHT 0202-X10					M10								
JOHT 0202-X12					M12								
JOHT 0203-X08	4	25	4	25	M8	21	7.2	11.2	44.5	33	115	Gray 29 JVCD-4	200
JOHT 0203-X10					M10								150
JOHT 0203-X12					M12								100
JOHT 0204-X08	2	35	3	-	M8	21	8.8	13	44.5	33	115	Brown 33 JVCD-2	100
JOHT 0204-X10					M10								
JOHT 0204-X12					M12								
JOHT 0205-X08	1	50	2	35	M8	23	9.5	15	44.5	35	121	Green 37 JVCD-1	50
JOHT 0205-X10					M10								
JOHT 0205-X12					M12								
JOHT 0206-X08	1/0	60	1	50	M8	23	10.2	16	44.5	35	121	Pink 42 JVCD-1/0	50
JOHT 0206-X10					M10								
JOHT 0206-X12					M12								
JOHT 0207-X08	2/0	70	1/0	60	M8	23	11.2	17	44.5	45	130	Black 45 JVCD-2/0	50
JOHT 0207-X10					M10								
JOHT 0207-X12					M12								
JOHT 0207-X14					M14								
JOHT 0207-X16					M16								

## HIGH VOLTAGE TUBULAR CABLE LUGS – TWO HOLE

### TYPE – HT (고전압용 동관단자)

- Material : Electrolytic Copper(TPC)
- Surface : Tin Plated
- With Inspection Hole
- To ICE 60228 Class 2 and Class 5

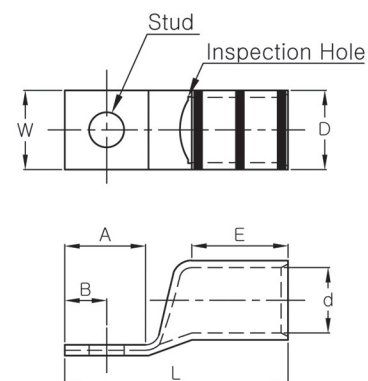


Part Number	Wire Range				Stud Size	Dimension (mm)						Color Code & Die No	Q' ty / Box
	CODE		FLEX			W	d	D	A	E	L		
	AWG	mm²	AWG	mm²									
JOHT 0208-X08	3/0	95	2/0	70	M8	27.5	13.3	20	44.5	45	134	Orange 48 JVCD-3/0	30
JOHT 0208-X10					M10								
JOHT 0208-X12					M12								
JOHT 0208-X14					M14								
JOHT 0208-X16					M16								
JOHT 0209-X08	4/0	100	3/0	95	M8	29	14	21	44.5	45	134	Orange 50 JVCD-4/0	30
JOHT 0209-X10					M10								
JOHT 0209-X12					M12								
JOHT 0209-X14					M14								
JOHT 0209-X16					M16								
JOHT 0210-X08	250	120	4/0	100	M8	30.5	15.2	22.2	44.5	50	139	Purple 54 JVCD-250	25
JOHT 0210-X10					M10								
JOHT 0210-X12					M12								
JOHT 0210-X14					M14								
JOHT 0210-X16					M16								
JOHT 0211-X08	300	150	250	120	M8	33	16.8	23.8	44.5	50	139	Yellow 62 JVCD-300	20
JOHT 0211-X10					M10								
JOHT 0211-X12					M12								
JOHT 0211-X14					M14								
JOHT 0211-X16					M16								
JOHT 0212-X08	350	185	300	150	M8	36	18.5	25.5	44.5	50	142	Red 71 JVCD-350	15
JOHT 0212-X10					M10								
JOHT 0212-X12					M12								
JOHT 0212-X14					M14								
JOHT 0212-X16					M16								

## NARROW TONGUE TUBULAR CABLE LUGS – ONE HOLE

### TYPE – JNCO (나로우 동관단자)

- Material : Electrolytic Copper(TPC)
- Surface : Tin Plated
- To IEC 60228 Class 2 and Class 5
- With Inspection Hole
- Color Coded to Show Proper Die Number and Color 6mm<sup>2</sup>~500mm<sup>2</sup>



Part Number	Wire Range				Stud Size	Dimension (mm)							Color Code & Die No	Q'ty / Box
	CODE		FLEX			W	d	D	A	B	E	L		
	AWG	mm <sup>2</sup>	AWG	mm <sup>2</sup>										
JNCO 0160-03	12~10	6	12~10	6	M3	6	4	6.0	12	4	8	24	-	500
JNCO 0101-04	8	10	8	10	M4	7.4	4.7	6.7	12	4	11	28	Red 21/JOCD-8	
JNCO 0102-04	6	16	6	16	M4	7.4	5.4	7.4	13	4	11	28	Blue 24/JOCD-6	300
JNCO 0103-05	4	25	-	-	M5	10.2	6.7	9.0	15	6	12	33	Gray 29/JOCD-4	200
JNCO 0103-06					M6									
JNCO 0104-06	2	35	4	25	M6	12.4	8.1	10.6	16	6	20	42	Brown 33/JOCD-2	150
JNCO 0104-08					M8	14				7				
JNCO 0105-06	1	50	2	35	M6	12.4	9.5	12	18	7	22	47	Green 37/JOCD-1	100
JNCO 0105-08					M8	15				8				
JNCO 0105-10					M10				22	9		51		
JNCO 0106-08	1/0	60	1	50	M8	13.2	10.2	13.2	18	7	24	49	Pink 42/JOCD-1/0	100
JNCO 0106-10					M10	17				8				
JNCO 0106-12					M12				22	9		53		
JNCO 0107-08	2/0	70	1	50	M8	14.5	11.3	14.6	22	7	25	54	Black 45/JOCD-2/0	80
JNCO 0107-10					M10	17				8				
JNCO 0107-12					M12				26	9		58		

## NARROW TONGUE TUBULAR CABLE LUGS – ONE HOLE TYPE – JNCO (나로우 동관단자)

- Material : Electrolytic Copper(TPC)
- Surface : Tin Plated
- To IEC 60228 Class 2 and Class 5
- With Inspection Hole
- Color Coded to Show Proper Die Number and Color 6mm<sup>2</sup>~500mm<sup>2</sup>

Part no. Explanation

JNCO 0102 - 08

→ Stud size(mm,UNC)

→ Series Model No.

→ Product part JNCO : One-hole type  
JNCT : Two-hole type

※ When ordering products refer to Part no. explanation



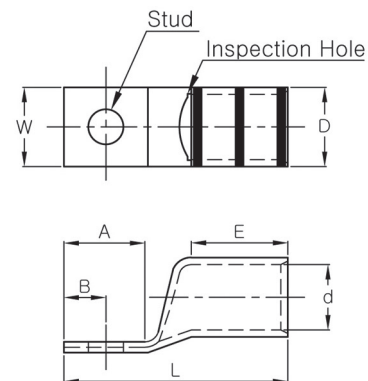
B

Part Number	Wire Range				Stud Size	Dimension (mm)								Color Code & Die No	Q'ty / Box			
	CODE		FLEX			W	d	D	A	B	E	L						
	AWG	mm <sup>2</sup>	AWG	mm <sup>2</sup>														
JNCO 0108-08	3/0	95	2/0	70	M8	18	13.5	17	30	9	25	64	Orange 48/ JOCD-3/0	50				
JNCO 0108-10					M10													
JNCO 0108-10P					M10	16.2			22	10	29	59.4						
JNCO 0108-12					M12	18			30	9	25	64						
JNCO 0109-08	4/0	100	2/0	70	M8	18	14	18	30	9	25	64	Orange 50/ JOCD-4/0	40				
JNCO 0109-10					M10													
JNCO 0109-10P					M10				22	10	30.2	62.2						
JNCO 0109-12					M12				30	9	25	64						
JNCO 0110-08	250 Kcmil	120	3/0	95	M8	19.5	15.2	19	31	15	27	73	Purple 54/ JOCD-250	40				
JNCO 0110-10					M10													
JNCO 0110-10P					M10				22	10	31.7	64.7						
JNCO 0110-12					M12				31	15	27	73						
JNCO 0111-08	300 Kcmil	150	250 Kcmil	120	M8	24	17	21	33	15	30	78	Yellow 62/ JOCD-300	40				
JNCO 0111-10					M10													
JNCO 0111-10P					M10	22			25	10	36.5	74.6						
JNCO 0111-12					M12	24			33	15	30	78						
JNCO 0111-16					M16													
JNCO 0112-08	350 Kcmil	185	300 Kcmil	150	M8	24.4	19	23.5	34	15	35	84	Red 71/ JOCD-350	25				
JNCO 0112-10					M10													
JNCO 0112-10P					M10	22.3			25	10	36.5	75.5						
JNCO 0112-12					M12	24.4			34	15	35	84						

## NARROW TONGUE TUBULAR CABLE LUGS – ONE HOLE

### TYPE – JNCO (나로우 동관단자)

- Material : Electrolytic Copper(TPC)
- Surface : Tin Plated
- To IEC 60228 Class 2 and Class 5
- With Inspection Hole
- Color Coded to Show Proper Die Number and Color 6mm<sup>2</sup>~500mm<sup>2</sup>

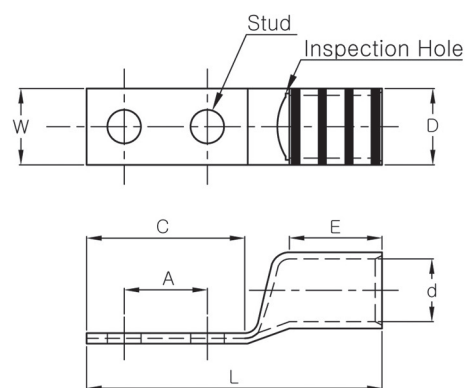


Part Number	Wire Range				Stud Size	Dimension (mm)							Color Code & Die No	Q'ty / Box		
	CODE		FLEX			W	d	D	A	B	E	L				
	AWG	mm²	AWG	mm²												
JNCO 0113-08	400 Kcmil	200	350 Kcmil	185	M8	24.4	21	26	35	15	40	90	Blue 76/ JOCD-400	15		
JNCO 0113-10					M10											
JNCO 0113-10P					M10	22,3			25	10	38,1	81,7				
JNCO 0113-12					M12	24.4			35	15	40	90				
JNCO 0114-08	500 Kcmil	240	400 Kcmil	200	M8	28.5	22	27.4	38	18	42	98	Brown 87/ JOCD-500	15		
JNCO 0114-10					M10											
JNCO 0114-10P					M10	26,9			25	11	44,4	87,4				
JNCO 0114-12					M12	28,5			38	18	42	98				
JNCO 0115-08	600 Kcmil	300	500 Kcmil	240	M8	28.5	24	30.5	38	20	46	104	Green 94/ JOCD-600	10		
JNCO 0115-10					M10											
JNCO 0115-10P					M10					28		10				94
JNCO 0115-12					M12					38		20				104
JNCO 0116-10	750 Kcmil	400	600 Kcmil	300	M10	33	27	35	45	23	60	128	Black 106/ JOCD-750	5		
JNCO 0116-12					M12											
JNCO 0116-14					M14											
JNCO 0116-16					M16											
JNCO 0117-10	1000 Kcmil	500	750 Kcmil	400	M10	142	31	40	45	27	60	132	White 125/ JOCD-1000	4		
JNCO 0117-12					M12											
JNCO 0117-14					M14											
JNCO 0117-16					M16											

## NARROW TONGUE TUBULAR CABLE LUGS – TWO HOLE

### TYPE – JNCT (나로우 동관단자)

- Material : Electrolytic Copper(TPC)
- Surface : Tin Plated
- To IEC 60228 Class 2 and Class 5
- With Inspection Hole
- Color Coded to Show Proper Die Number and Color 25mm<sup>2</sup>~500mm<sup>2</sup>

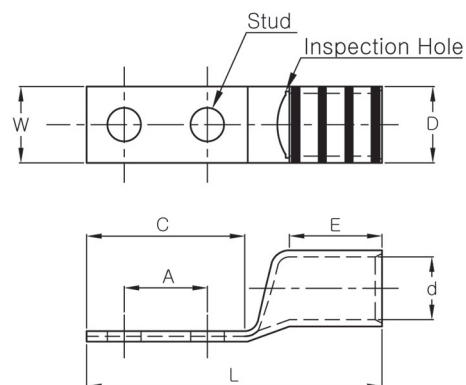


Part Number	Wire Range				Stud Size	Dimension (mm)							Color Code & Die No	Q'ty / Box
	CODE		FLEX			W	d	D	C	E	L	A		
	AWG	mm²	AWG	mm²										
JNCT 0203-05	4	25	-	-	M5	10.2	6.7	9.0	31	12	43	16	Gray 29/ JOCD-4	200
JNCT 0203-06					M6									
JNCT 0204-06	2	35	4	25	M6	12.4	8.1	10.6	31	20	59	16	Brown 33/ JOCD-2	100
JNCT 0204-08					M8				42		68	25		
JNCT 0205-06	1	50	2	35	M6	12.4	9.5	12	42	22	71	25	Green 37/ JOCD-1	50
JNCT 0205-08					M8	15								
JNCT 0205-10					M10	64			24	95	44.5			
JNCT 0206-08	1/0	60	1	50	M8	13.2	10.2	13.2	64	24	95	44.5	Pink 42/ JOCD-1/0	50
JNCT 0206-10					M10	17								
JNCT 0206-12					M12	68			99					
JNCT 0207-08	2/0	70	1	50	M8	14.5	11.3	14.6	64	25	96	44.5	Black 45/ JOCD-2/0	50
JNCT 0207-10					M10	17								
JNCT 0207-12					M12	68			100					

## NARROW TONGUE TUBULAR CABLE LUGS – TWO HOLE

### TYPE – JNCT (나로우 동관단자)

- Material : Electrolytic Copper(TPC)
- Surface : Tin Plated
- To IEC 60228 Class 2 and Class 5
- With Inspection Hole
- Color Coded to Show Proper Die Number and Color 25mm<sup>2</sup>~500mm<sup>2</sup>



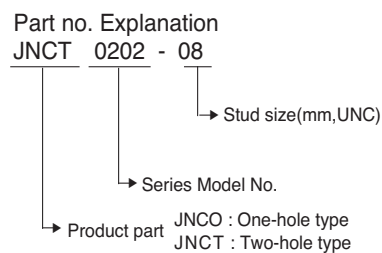
Part Number	Wire Range				Stud Size	Dimension (mm)								Color Code & Die No	Q'ty / Box
	CODE		FLEX			W	d	D	C	E	L	A			
	AWG	mm <sup>2</sup>	AWG	mm <sup>2</sup>											
JNCT 0208-08	3/0	95	2/0	70	M8	18	13.5	17	74	25	108	44.5	Orange 48/ JOCD-3/0	30	
JNCT 0208-10					M10										
JNCT 0208-12					M12										
JNCT 0209-08	4/0	100	2/0	70	M8	18	14	18	74	25	108	44.5	Orange 50/ JOCD-3/0	30	
JNCT 0209-10					M10										
JNCT 0209-12					M12										
JNCT 0210-08	250 Kcmil	120	3/0	95	M8	19.5	15.2	19	74	27	116	44.5	Purple 54/ JOCD-250	25	
JNCT 0210-10					M10										
JNCT 0210-12					M12										
JNCT 0211-08	300 Kcmil	150	250 Kcmil	120	M8	24	17	21	74	30	119	44.5	Yellow 62/ JOCD-300	20	
JNCT 0211-10					M10										
JNCT 0211-12					M12										
JNCT 0212-08	350 Kcmil	185	300 Kcmil	150	M8	24.4	19	23.5	74	35	124	44.5	Red 71/ JOCD-350	15	
JNCT 0212-10					M10										
JNCT 0212-12					M12										



## NARROW TONGUE TUBULAR CABLE LUGS – TWO HOLE

### TYPE – JNCT (나로우 동관단자)

- Material : Electrolytic Copper(TPC)
- Surface : Tin Plated
- To IEC 60228 Class 2 and Class 5
- With Inspection Hole
- Color Coded to Show Proper Die Number and Color 25mm<sup>2</sup>~500mm<sup>2</sup>



※ When ordering products refer to Part no. explanation

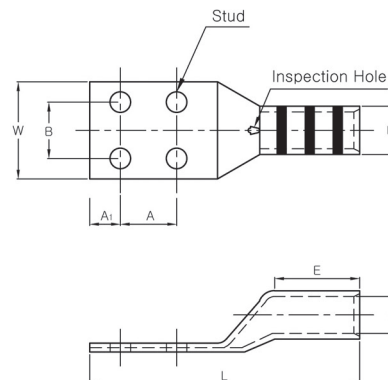


Part Number	Wire Range				Stud Size	Dimension (mm)							Color Code & Die No	Q'ty / Box
	CODE		FLEX			W	d	D	C	E	L	A		
	AWG	mm <sup>2</sup>	AWG	mm <sup>2</sup>										
JNCT 0213-08	400 Kcmil	200	350 Kcmil	185	M8	24.4	21	26	74	40	129	44.5	Blue 76/ J OCD-400	10
JNCT 0213-10					M10									
JNCT 0213-12					M12									
JNCT 0214-08	500 Kcmil	240	400 Kcmil	200	M8	28.5	22	27.4	74	42	144	44.5	Brown 87/ J OCD-500	10
JNCT 0214-10					M10									
JNCT 0214-12					M12									
JNCT 0215-08	600 Kcmil	300	500 Kcmil	240	M8	28.5	24	30.5	74	56	154	44.5	Green 94/ J OCD-600	8
JNCT 0215-10					M10									
JNCT 0215-12					M12									
JNCT 0216-10	750 Kcmil	400	600 Kcmil	300	M10	33	27	35	76	60	158	44.5	Black 106/ J OCD-750	4
JNCT 0216-12					M12									
JNCT 0216-14					M14									
JNCT 0216-16					M16									
JNCT 0217-10	1000 Kcmil	500	750 Kcmil	400	M10	42	31	40	76	60	158	44.5	White 125/ J OCD-1000	3
JNCT 0217-12					M12									
JNCT 0217-14					M14									
JNCT 0217-16					M16									

## TUBULAR CABLE LUGS – FOUR HOLE TYPE

### (4Hole 동관단자)

- Material : Electrolytic Copper(TPC)
- Surface : Tin Plated
- With Inspection Hole or Without Inspection Hole
- To IEC 60228 Class 2 and Class 5
- Voltage Range up to 35KV



Hole Distance – 25mm

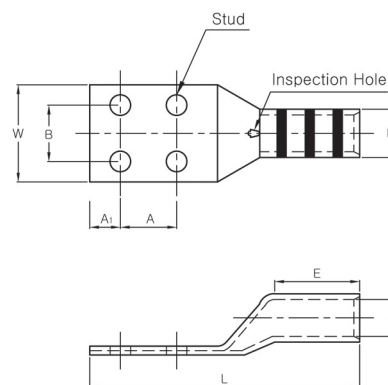


Part Number	Wire Range		Stud Size	Dimension(mm)								Color Code & Die No
	mm <sup>2</sup>	AWG		W	B	A	A <sub>1</sub>	D	d	E	L	
JOFA 240-10	240	500Kcmil	M10	58	35	25	15	27.4	22	45	110	Brown 87/ 110~125-26
JOFA 240-12			M12									
JOFA 240-14			M14									
JOFA 300-10	300	600Kcmil	M10	58	35	25	15	30.5	24	50	115	Green 94/ 150-29
JOFA 300-12			M12									
JOFA 300-14			M14									
JOFA 400-10	400	750Kcmil	M10	58	35	25	15	34	26	52	120	Black 106/ 180~200-32
JOFA 400-12			M12									
JOFA 400-14			M14									
JOFA 500-10	500	1000Kcmil	M10	58	35	25	15	40	31	56	124	White 125/ 250-38
JOFA 500-12			M12									
JOFA 500-14			M14									
JOFA 630-10	630	1250Kcmil	M10	65	35	25	15	45	34	66	145	Pink 142/ 400~500-47
JOFA 630-12			M12									
JOFA 630-14			M14									
JOFA 800-10	800	1500Kcmil	M10	73	35	25	15	50.6	39	70	150	Orange 150/ 600-51
JOFA 800-12			M12									
JOFA 800-14			M14									
JOFA 1000-10	1000	2000Kcmil	M10	80	35	25	15	56.2	43	88	188	Green 194/ SGWD-3030
JOFA 1000-12			M12									
JOFA 1000-14			M14									

## TUBULAR CABLE LUGS – FOUR HOLE TYPE

### (4Hole 동관단자)

- Material : Electrolytic Copper(TPC)
- Surface : Tin Plated
- With Inspection Hole or Without Inspection Hole
- To IEC 60228 Class 2 and Class 5
- Voltage Range up to 35KV



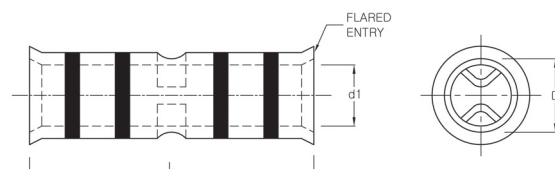
Hole Distance – 40mm



Part Number	Wire Range		Stud Size	Dimension(mm)								Color Code & Die No
	mm <sup>2</sup>	AWG		W	B	A	A <sub>1</sub>	D	d	E	L	
JOFB 300-10	300	600Kcmil	M10	75	40	40	15	30.5	24	55	150	Green 94/ 150-29
JOFB 300-12			M12									
JOFB 300-14			M14									
JOFB 400-10	400	750Kcmil	M10	75	40	40	15	34	26	59	165	Black 106/ 180~200-32
JOFB 400-12			M12									
JOFB 400-14			M14									
JOFB 500-10	500	1000Kcmil	M10	75	40	40	15	40	31	70	172	White 125/ 250-38
JOFB 500-12			M12									
JOFB 500-14			M14									
JOFB 630-10	630	1250Kcmil	M10	75	40	40	15	45	34	70	187	Pink 142/ 400~500-47
JOFB 630-12			M12									
JOFB 630-14			M14									
JOFB 800-10	800	1500Kcmil	M10	75	40	40	15	50.6	39	70	190	Orange 150/ 600-51
JOFB 800-12			M12									
JOFB 800-14			M14									
JOFB 1000-10	1000	2000Kcmil	M10	80	40	40	20	56.2	43	88	215	Green 194/ SGWD-3030
JOFB 1000-12			M12									
JOFB 1000-14			M14									

## FLEX CONDUCTOR TUBULAR BUTT-CONNECTORS, FLARED TYPE-JFS(F) (확관 슬리브)

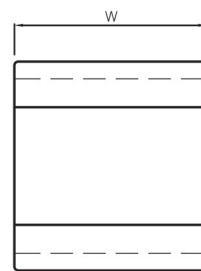
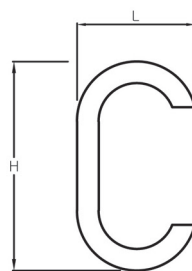
- Material : Electrolytic Copper (TPC)
- Surface : Tin Plated
- Flared Barrel Ends for Easy Insertion of Extra Flexible Cable
- Color Coded to Show Proper Die Number and Color 10mm<sup>2</sup>~240mm<sup>2</sup>
- Internal Wirestop Prevent Over Insertion of Cable
- To IEC 60228 Class 5 and Class 6
- UL Listed 486A-486B up to 35KV



Part Number	Wire Range		Color Code & Die No	Dimension(mm)			Q'ty / Bag
	AWG	mm <sup>2</sup>		d <sub>i</sub>	D	L	
JFS 16	8	10	Blue 24	5.4	7.4	35.0	300
JFS 25	6	16	Gray 29	6.7	9.0	40.0	300
JFS 35	4~3	25	Brown 33	8.1	10.6	45.0	200
JFS 50	2	35	Pink 42	9.5	12.0	50.0	100
JFS 70	1~1/0	50	Black 45	11.3	14.6	55.0	100
JFS 95	2/0	70	Orange 50	13.5	17.0	60.0	70
JFS 120	3/0	95	Purple 54	15.2	19.0	65.0	50
JFS 150	250Kcmil	120	Yellow 62	17.0	21.0	70.0	40
JFS 185	300Kcmil	150	Red 71	19.0	23.5	80.0	35
JFS 240	350Kcmil	185	Brown 87	22.0	27.4	90.0	20
JFS 300	400Kcmil	240	Green 94	24.0	30.5	100	20

## C-TAP CONNECTORS(C형슬리브) TYPE-CC

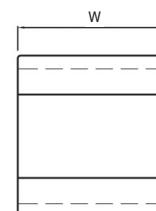
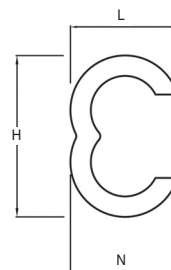
- Material : Electrolytic Copper
- Surface : Copper Finish (Tin Plated on Request)
- For Tapping into Unbroken Continuous Main, as a Wire Joint or 2-Way Splice



Part Number	Wire Range				Dimension (mm)				Q' ty / Bag
	RUN		TAP						
	AWG	mm <sup>2</sup>	AWG	mm <sup>2</sup>	H	L	W	T	
JOCC 6	10	5.5~6	10	5.5~6	10.3	6.5	16.0	1.1	1,000
JOCC 10	8	8~10	8	8~10	12.0	8.0	20.0	1.5	500
JOCC 16	6	14~16	6	14~16	14.6	8.0	26.0	1.5	200
JOCC 25	4~3	22~25	4~3	22~25	19.3	11.0	30.0	2.0	100
JOCC 35	2	35~38	2	35~38	23.9	13.2	30.0	2.2	50
JOCC 50	1~1/0	50~60	1~1/0	50~60	26.0	17.5	40.0	3.0	30
JOCC 70	2/0	70~80	2/0	70~80	30.6	18.1	40.0	3.5	30
JOCC 95	3/0~4/0	95~100	3/0~4/0	95~100	36.0	21.7	40.0	3.5	25
JOCC 120	250MCM	120	250MCM	120	40.0	24.5	45.0	4.0	25
JOCC 150	300MCM	150	300MCM	150	47.0	25.5	50.0	4.5	18
JOCC 185	350Kcmil~400Kcmil	185~200	350MCM~400MCM	185~200	48.0	30.6	60.0	4.5	18
JOCC 240	500Kcmil	240~250	500MCM	240~250	60.0	35.8	60.0	5.0	10
JOCC 300	600Kcmil~650Kcmil	300~325	600MCM~650MCM	300~325	64.0	37.0	70.0	5.5	10

## BRANCH CONNECTORS(3자형슬리브, 분기형 슬리브) TYPE-CC(3)

- Material : Electrolytic Copper
- Surface : Copper Finish (Tin Plated on Request)
- For Splicing Branching of Earth Conductors

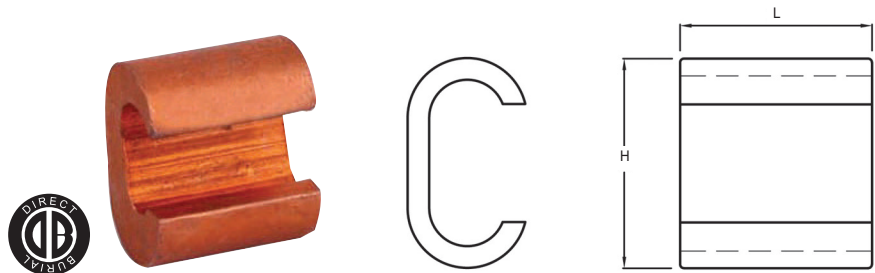


\*Dimensions are subject to change according to our circumstances.

Part Number	Wire Range				Dimension (mm)					Q' ty / Bag
	RUN		TAP		H	L	N	W	T	
	AWG	mm <sup>2</sup>	AWG	mm <sup>2</sup>						
JOCC 2506	4~3	22~25	10	5.5~6	16.2	11.0	6.7	30.0	1.5	100
JOCC 3516	2	35~38	6	14~16	22.3	15.8	12.7	40.0	3.0	50
JOCC 3525			4~3	22~25	22.3	15.1	12.7			
JOCC 3535			2	35~38	26.6	15.8	16.0			
JOCC 5025	1	50	4~3	22~25	24.4	15.5	13.7	40.0	3.5	30
JOCC 5035			2	35~38	28.1	16.2	13.7			
JOCC 5050			1	50	28.1	15.1	15.1			
JOCC 7016	1/0~2/0	60~70	6	14~16	26.0	17.4	12.3	40.0	3.5	30
JOCC 7025			4~3	22~25	27.0	17.4	13.0			
JOCC 7035			2	35~38	27.0	16.8	14.9			
JOCC 7050			1	50	29.0	17.2	15.5			
JOCC 7070			1/0~2/0	60~70	33.0	17.1	17.1			
JOCC 9525	3/0~4/0	95~100	4~3	22~25	31.6	21.4	13.0	40.0	4.0	25
JOCC 9535			2	35~38	33.8	21.4	14.5			
JOCC 9550			1	50~60	35.7	21.4	16.1			
JOCC 15035	300Kcmil	150	2	35~38	39.3	28.8	19.3	50.0	4.5	18
JOCC 15050			1	50~60	41.1	29.1	21.8			
JOCC 15095			3/0~4/0	95~100	47.0	29.1	25.8			
JOCC 150150			300MCM	150	49.6	28.6	29.6			

## GROUND SLEEVES (접지 슬리브)

- Material : High Conductivity Copper
- Surface : Copper Finish

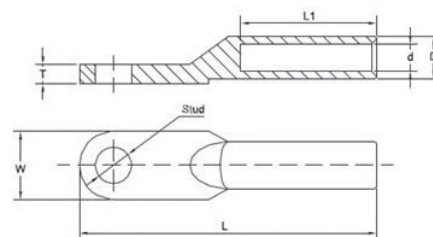


Part Number	COPPER CONDUCTOR SIZE				DIMENSION (mm)		Dies No.	No. of Crimps
	AWG		mm <sup>2</sup>					
	RUN	TAP	RUN	TAP	H	L		
SGW-22	4	4	22(25)	22(25)	20	30	SGWD-22	1
SGW-44	2	4~2	38(35)	38~22(35~25)	24	30	SGWD-44	
SGW-62	2/0	4	60(70)	22(25)	27	30	SGWD-62	
SGW-66	2/0	2/0~2	60(70)	60~38(70~35)	30	30	SGWD-1002	
SGW-1002	4/0	4	100(95)	22(25)	30	40	SGWD-1002	
SGW-1006	4/0	2/0~2	100(95)	60~38(70~35)	34	40	SGWD-1006	
SGW-1010	4/0	4/0	100(95)	100(95)	38	40	SGWD-1010	
SGW-1212	250Kcmil	250Kcmil	120	120	47	55	SGWD-2010	
SGW-1506	300Kcmil	2/0~2	150	60~38(70~35)	47	55	SGWD-2010	3
SGW-2004	400Kcmil	2	200(185)	38(35)	47	55	SGWD-2010	
SGW-2010	400Kcmil	4/0~2/0	200(240)	100~60(38)	46	60	SGWD-2010	
SGW-2507	500Kcmil	2/0~2	240	70~35	46	60	SGWD-2010	
SGW-1515	300Kcmil	300Kcmil~4/0	150(240)	150~95(95~70)	60	55	SGWD-2525	
SGW-2020	400Kcmil	400Kcmil~300Kcmil	200(185)	200~150	60	60	SGWD-2525	
SGW-2515	500Kcmil	300Kcmil~4/0	240	150~95	60	60	SGWD-2525	
SGW-2525	500Kcmil	500Kcmil~300Kcmil	240	240~150	62	65	SGWD-2525	
SGW-3030	600Kcmil	600Kcmil~500Kcmil	300	300~240	65	65	SGWD-3030	

\*For Crimping Tool information See Page C23

## CODE CONDUCTOR, ONE-HOLE, ALUMINIUM COMPRESSED TYPE-AT(O) (알루미늄단자)

- Material : AL 99.5
- Surface : AL Finish (Tin Plated on Request)
- Application Cable 16mm<sup>2</sup> ~ 630mm<sup>2</sup>
- Compression joints for application up to 35KV

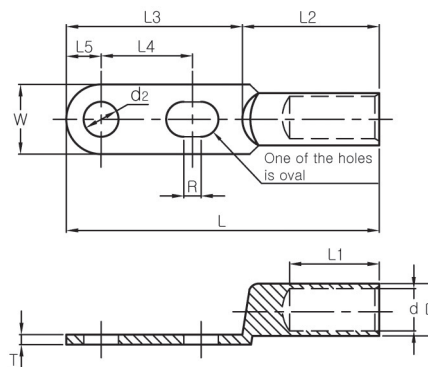
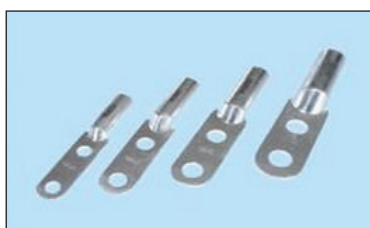


Part Number	Wire Range		Stud Size	Dimension (mm)						Q'ty / Bag
	AWG	mm <sup>2</sup>		W	D	d	L	L1	T	
JATO-16	6	16	M8.5	16	11	6.4	70	32	4.5	20
JATO-25	4	25	M8.5	18	12	7.4	75	35	4.5	20
JATO-35	2	35	M10.5	20	14	8.7	85	39	4.8	20
JATO-50	1	50	M10.5	23	16	9.7	90	40	5.5	20
JATO-70	2/0	70	M12.5	26	18	11.7	100	43	5.5	5
JATO-95	3/0	95	M12.5	28	20	13.7	112	50	5.8	5
JATO-120	250 Kcmil	120	M14.5	30	22	15.2	120	52	6.5	5
JATO-150	300 Kcmil	150	M14.5	34	24	16.7	126	55	6.7	5
JATO-185	350 Kcmil	185	M17	37	27	18.7	133	60	7	5
JATO-240	500 Kcmil	240	M17	40	30	21	140	61	7.2	4
JATO-300	600 Kcmil	300	M21	50	34	23	165	65	7.5	4
JATO-400	800 Kcmil	400	M21	50	38	26	170	70	8	4
JATO-500	1000 Kcmil	500	M21	60	45	29	190	75	10	3
JATO-630	1250 Kcmil	630	M21	60	50	34	220	80	10.5	3



## CODE CONDUCTOR, TWO-HOLE, ALUMINIUM COMPRESSED TYPE-AT(T) (알루미늄단자)

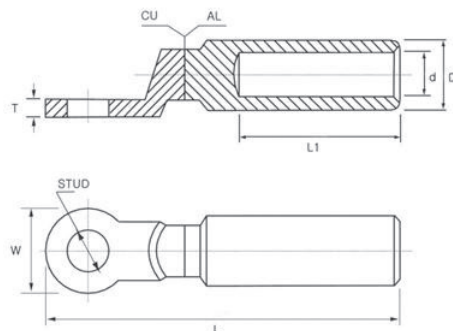
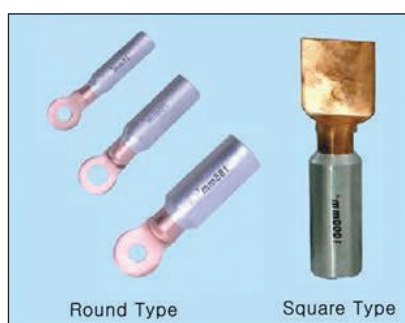
- Material : AL 99.5
- Surface : AL Finish (Tin Plated on Request)
- Application Cable 16mm<sup>2</sup> ~ 630mm<sup>2</sup>
- Compression joints for application up to 35KV



Part Number	Wire Range		Stud Size	Dimension (mm)												Q'ty / Bag
	AWG	mm <sup>2</sup>		D	d	d <sub>2</sub>	L1	L2	L3	L4	L5	L	W	T	R	
JATT-16	6	16	M8.5	11	6.4	8.5	33	45	43	22.5	8	88	16	3	5	20
JATT-25	4	25	M8.5	12	7.4	8.5	34	46	44	22.5	9	90	18	3.2	5	20
JATT-35	2	35	M10.5	14	8.7	10.5	36	48	62	36	10	110	20	3.5	8	20
JATT-50	1	50	M10.5	16	9.7	10.5	38	52	63	36	11.5	115	23	4	8	20
JATT-70	2/0	70	M12.5	18	11.7	12.5	43	59	68	36	13	127	26	4.2	8	5
JATT-95	3/0	95	M12.5	20	13.7	12.5	48	63	70	36	14	133	28	5	8	5
JATT-120	250 Kcmil	120	M14.5	22	15.2	14.5	50	68	72	36	15	140	30	5.2	8	5
JATT-150	300 Kcmil	150	M14.5	24	16.7	14.5	55	73	77	36	17	150	34	6	8	5
JATT-185	350 Kcmil	185	M17	27	18.7	17	57	82	78	36	18.5	160	37	6.5	8	5
JATT-240	500 Kcmil	240	M17	30	21	17	57	84	80	36	20	164	40	7	8	4
JATT-300	600 Kcmil	300	M17	34	23	17	67	90	95	36	25	185	50	8	8	4
JATT-400	800 Kcmil	400	M21	38	26	21	75	115	100	42.5	26	215	50	8.5	5	4
JATT-500	1000 Kcmil	530	M21	45	29	21	77	120	100	42.5	26	220	60	10	5	3
JATT-630	1250 Kcmil	630	M21	50	34	21	80	125	105	42.5	28	230	60	12	5	3

## COMPRESSION CABLE LUGS AND CONNECTORS FOR AL-CU CONNECTIONS (알루미늄/구리 동관단자) TYPE-CAS

- Material : Al ≥ 99.5%, Cu ≥ 99.9%
- Friction Welding

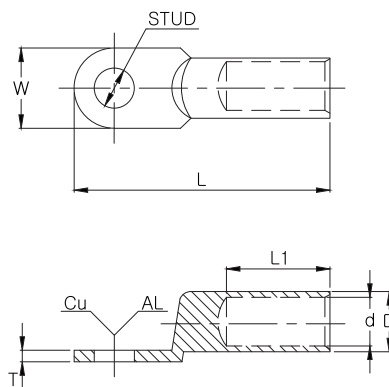
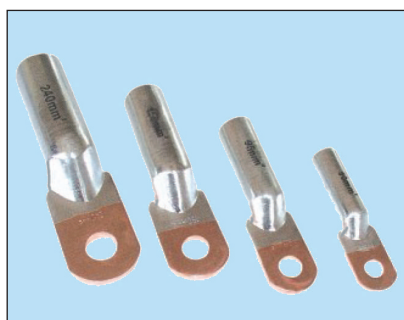


Part Number		Wire Range		Stud Size	Dimension (mm)					
Round Type	Square Type	AWG	mm <sup>2</sup>		W	D	d	L	L1	T
CAS 16	—	6	16	M13	24	16	5.5	90	42	4
CAS 25	—	4	25	M13	24	16	6.5	90	42	4
CAS 35	—	2	35	M13	24	16	8	90	42	4
CAS 50	—	1	50	M13	24	20	9	92	43	5
CAS 70	—	2/0	70	M13	24	20	11	92	43	5
CAS 95	—	3/0	95	M13	24	20	12.5	92	43	5
CAS 120	—	250 Kcmil	120	M13	30	25	13.5	117	60	6
CAS 150	—	300 Kcmil	150	M13	30	25	15.5	117	60	6
CAS 185	—	350 Kcmil	185	M13	35	32	17	124	60	6.5
CAS 240	—	500 Kcmil	240	M13	35	32	19.5	124	60	6.5
CAS 300	—	600 Kcmil	300	M13	36	34	22.5	130	62	7
CAS 400	—	800 Kcmil	400	M13	36	40	26	152	80	8
CAS 500	—	1000 Kcmil	500	M13	36	40	29	152	80	8
CAS 630	CAS 630S	1250 Kcmil	630	M13	50	54	34	165	70	10
CAS 800	CAS 800S	1600 Kcmil	800	M13	50	54	39	230	115	10
CAS 1000	CAS 1000S	2000 Kcmil	1000	M13	50	65	44	230	115	10

\*This product can be ordered by customer's request.

## COMPRESSION CABLE LUGS AND CONNECTORS FOR AL-CU CONNECTIONS (알루미늄/구리 동관단자) TYPE-DTL

- Material : Al $\geq$ 99.5%, Cu $\geq$ 99.9%
- Friction Welding

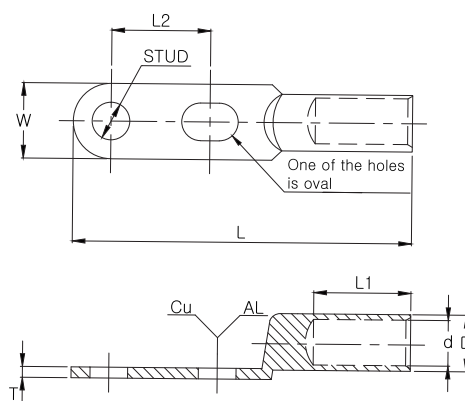
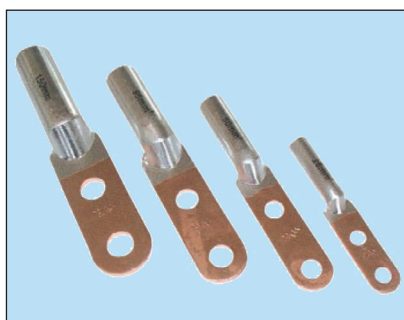


Part Number	Wire Range		Stud Size	Dimension (mm)					
Roung Type	AWG	mm <sup>2</sup>		W	D	d	L	L1	T
DTL 16	6	16	M8.5	16	11	6.4	70	32	3
DTL 25	4	25	M8.5	18	12	7.4	75	34	3.2
DTL 35	2	35	M10.5	20.5	14	8.7	85	40	3.8
DTL 50	1	50	M10.5	23	16	9.7	90	42	4.0
DTL 70	2/0	70	M12.5	26	18	12.2	102	47	4.6
DTL 95	3/0	95	M12.5	28	21	13.7	112	50	5
DTL 120	250 Kcmil	120	M14.5	30	23	15.2	120	53	5.2
DTL 150	300 Kcmil	150	M14.5	33	25	16.5	126	55	6
DTL 185	350 Kcmil	185	M17	37	28	18.5	135	58	6.5
DTL 240	500 Kcmil	240	M17	40	30	21	141	60	7
DTL 300	600 Kcmil	300	M17	50	35	23.5	180	72	8
DTL 400	800 Kcmil	400	M21	50	38	26.5	185	76	8.5
DTL 500	1000 Kcmil	500	M21	55	45	29.5	200	80	9
DTL 630	1250 Kcmil	630	M21	60	50	34	215	80	10

\*This product can be ordered by customer's request.

# COMPRESSION CABLE LUGS AND CONNECTORS FOR AL-CU CONNECTIONS (알루미늄/구리 동관단자) TYPE-2H DTLD

- Material : Al $\geq$ 99.5%, Cu $\geq$ 99.9%
- Friction Welding



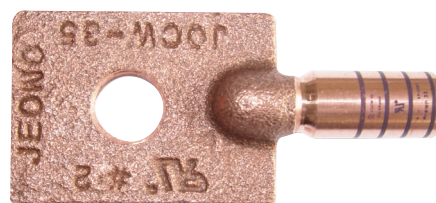
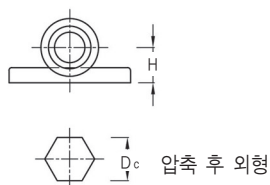
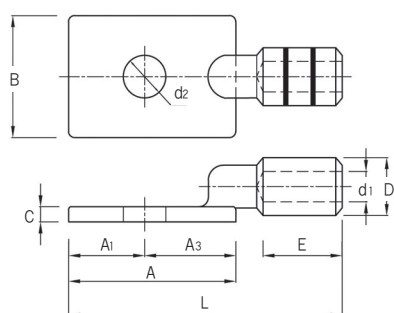
Part Number	Wire Range		Stud Size	Dimension (mm)						
Round Type	AWG	mm <sup>2</sup>		W	D	d	L	L1	L2	T
DTLD 16	6	16	M8,5	16	11	6,4	95	33	25	4
DTLD 25	4	25	M8,5	18	12	7,4	100	35	25	4
DTLD 35	2	35	M10,5	20,5	14	8,7	125	38	40	4
DTLD 50	1	50	M10,5	23	16	9,7	130	40	40	5
DTLD 70	2/0	70	M12,5	26	18	11,7	142	45	40	5
DTLD 95	3/0	95	M12,5	28	21	13,7	150	51	40	5
DTLD 120	250 Kcmil	120	M14,5	30	23	15,2	160	56	40	6
DTLD 150	300 Kcmil	150	M14,5	34	25	16,7	165	57	40	6
DTLD 185	350 Kcmil	185	M17	37	28	18,7	176	58	40	6,5
DTLD 240	500 Kcmil	240	M17	40	30	21	188	60	40	6,5
DTLD 300	600 Kcmil	300	M17	50	35	23,5	220	73	40	7
DTLD 400	800 Kcmil	400	M21	55	38	26	225	78	45	7,5
DTLD 500	1000 Kcmil	500	M21	55	45	29	230	80	45	9,5
DTLD 630	1250 Kcmil	630	M21	60	50	34	235	80	45	9,5

\*This product can be ordered by customer's request.

## COMPRESSION CASTING LUGS (동주물단자)

### TYPE-CW 1H

- Material : Electrolytic Copper (TPC)
- Surface : Copper Finish(Tin Plated or Silver Plated on Request)
- UL Listed per 486A~486B

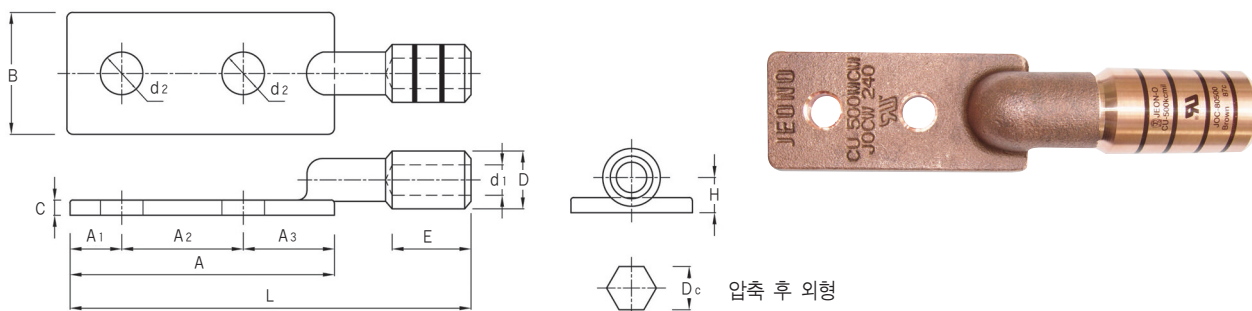


Part Number	Wire Range		Stud Size	Dimension (mm)													Die Color & No		
	AWG	mm²		D	d <sub>1</sub>		E	A	A <sub>1</sub>	A <sub>2</sub>	A <sub>3</sub>	B	C	d <sub>2</sub>	L	H		D <sub>c</sub>	
JOCW 25–1H	4	22,25	M12	14	+0.8 –0.2	6.4	±0.2	26	55	25	–	30	40	5	14	90	8	12.1	Gray
JOCW 35–1H	2	35,38	M12			8.3													Brown
JOCW 50–1H	1~1/0	50,60	M12	19		10.2	±0.3	30								Green			

## COMPRESSION CASTING LUGS (동주물단자)

### TYPE-CW 2H

- Material : Electrolytic Copper (TPC)
- Surface : Copper Finish(Tin Plated or Silver Plated on Request)
- UL Listed per 486A~486B



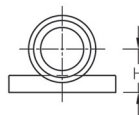
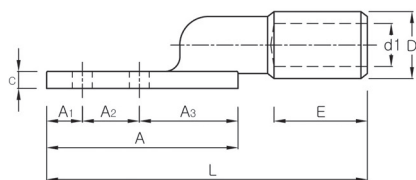
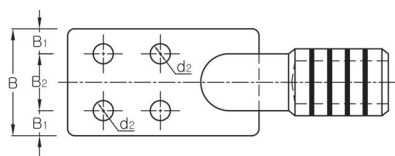
Part Number	Wire Range		Stud Size	Dimension (mm)													Die Color & No
	AWG	mm <sup>2</sup>		D	d <sub>1</sub>	E	A	A <sub>1</sub>	A <sub>2</sub>	A <sub>3</sub>	B	C	d <sub>2</sub>	L	H	D <sub>c</sub>	
JOCW 50-2H	1	50	M12	19	10.2	30	90	18		32	40	6		135	11	16.4	Green
JOCW 60-2H	1/0	60	M12														Pink
JOCW 70-2H	2/0	70	M12	23	11.7	39	95	20		35		8		150	13	19.9	Black
JOCW 95-2H	3/0~4/0	95,100	M12		13.6												
JOCW 120-2H	250 Kcmil	120	M12	26	15.2	44	110			45	50	10		170	16	22.5	Purple
JOCW 150-2H	300 Kcmil	150	M12	29	16.9												Yellow
JOCW 185-2H	400 Kcmil	185	M12	32	18.5	53	110		40±0.4 ~ 44.5±0.4	45	50	10	14	180	17.5	27.7	Red
JOCW 200-2H	400 Kcmil	200	M12		19.5												
JOCW 240-2H	500 Kcmil	240	M12	36	21.0	62		25						207	19.5	31.1	Brown
JOCW 250-2H	500 Kcmil	250	M12	38	21.9										20.5	32.9	
JOCW 300-2H	600 Kcmil	300~325	M12	42	24.7	70	115			50		12		212	23	36.3	Green
JOCW 400-2H	800 Kcmil	400	M12	47	27.4												Black
JOCW 500-2H	1000 Kcmil	500	M12		30.2									222	22.5	40.7	White

# COMPRESSION CASTING LUGS (동주물단자)

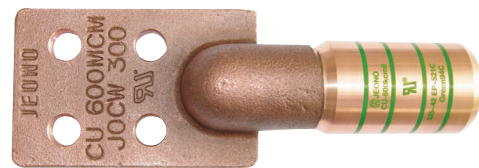
## TYPE-CW 4H

- Material : Electrolytic Copper (TPC)
- Surface : Copper Finish(Tin Plated or Silver Plated on Request)
- UL Listed per 486A~486B

B



압축 후 외형

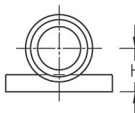
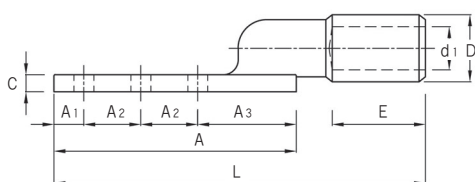
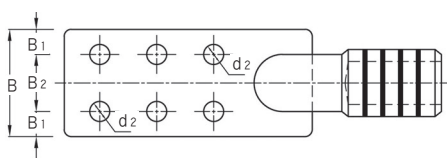


Part Number	Wire Range		Stud Size	Dimension (mm)																Die Color & No	
	AWG	mm²		D		d <sub>1</sub>		E	A	A <sub>1</sub>	A <sub>2</sub>	A <sub>3</sub>	B	B <sub>1</sub>	B <sub>2</sub>	C	d <sub>2</sub>	L	H		D <sub>c</sub>
JOCW 300-4H	600 Kcmil	300,325	M12	42	+0.1 -0.2	24.7	±0.4	62	115	25	40 ±0.4	50	75	17.5	40 ±0.4	10	14	212	23	36.3	Green
JOCW 400-4H	800 Kcmil	400	M12	47		27.4		70								12		222	22.5	40.7	Black
JOCW 500-4H	1000 Kcmil	500	M12			30.2															

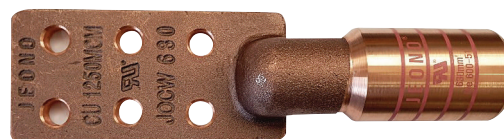
## COMPRESSION CASTING LUGS (동주물단자)

### TYPE-CW 6H

- Material : Electrolytic Copper (TPC)
- Surface : Copper Finish(Tin Plated or Silver Plated on Request)
- UL Listed per 486A~486B



압축 후 외형



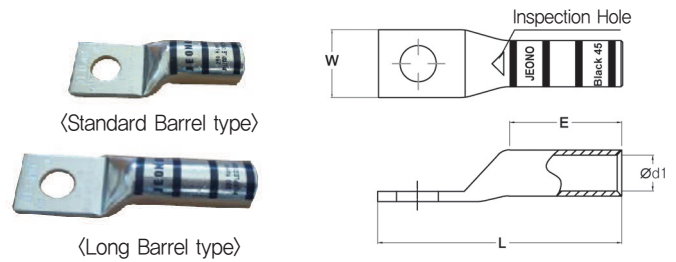
Part Number	Wire Range		Stud Size	Dimension (mm)																Die Color & No	
	AWG	mm²		D		d <sub>1</sub>		E	A	A <sub>1</sub>	A <sub>2</sub>	A <sub>3</sub>	B	B <sub>1</sub>	B <sub>2</sub>	C	d <sub>2</sub>	L	H		D <sub>c</sub>
JOCW 630–6H	1250 Kcmil	600, 630	M12	51	+0.1 −0.2	33.3	±0.4	70	155	25	40±0.4	50	75	17.5	40±0.4	12	14	262	28	44.1	Pink
JOCW 800–6H	1600 Kcmil	800	M16	56		39.3		90	190	30	50±0.6	60	100	25	50±0.6		18	325	30.5	48.4	Orange
JOCW 1000–6H	2000 Kcmil	1,000	M16	64		43.2		100								335					



## TUBULAR CABLE LUGS, ONE-HOLE, FOR GROUND BUSBAR (부스바용 동관단자)

### TYPE-BO

- Material : Electrolytic Copper (TPC)
- Surface : Tin Plated
- With Inspection Hole
- Color Coded to Show Proper Die Number and Color 10mm<sup>2</sup>~100mm<sup>2</sup>
- UL Listed 486A-486B up to 35KV



Part No Explanation : JOBO 0101-S X.04 → Stud Size(mm, UNC)

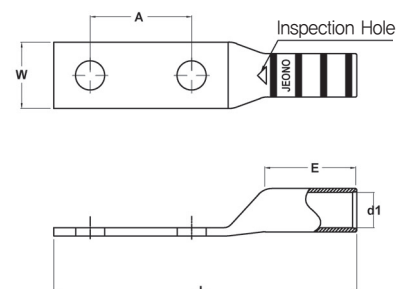
Barrel Form \*S : Standard Barrel Type  
\*L : Long Barrel Type



Part Number	Wire Range				Stud Size	Dimension (mm)						Color Code & Die No
	CODE		FLEX			W	d1	E		L		
	AWG	mm <sup>2</sup>	AWG	mm <sup>2</sup>				*S	*L	*S	*L	
JOBO 0101-SX06	8	10	8	10	M6	10	4.5	15	19	33	37	Red 21, JOCD-8
JOBO 0102-SX06	6	16	6	16	M6	12	5.4	17	25	36	43	Blue 24, JOCD-6
JOBO 0102-SX10					M10	15.5				42	49	
JOBO 0103-SX06	4	25	-	-	M6	13	6.7	18	25	41	48	Gray 29, JOCD-4
JOBO 0103-SX10					M10	15.5				45	52	
JOBO 0104-SX06	2	35	4	25	M6	16	8.1	21	30	48	56	Brown 33, JOCD-2
JOBO 0104-SX08					M8							
JOBO 0104-SX10					M10							
JOBO 0105-SX10	1	50	2	35	M10	18	9.5	21	35	52	65	Green 37, JOCD-1
JOBO 0106-SX10	1/0	60	1	50	M10	19	10.2	23	36	56	69	Pink 42, JOCD-1/0
JOBO 0107-SX10	2/0	70	1	50	M10	21	11.3	23.5	36	56	68.5	Black 45, JOCD-2/0
JOBO 0108-SX12	3/0	95	2/0	70	M12	25	13.5	26	38.5	66	79.5	Orange 48, JOCD-3/0
JOBO 0109-SX12	4/0	100	2/0	70	M12	26	14	29	43	69.5	82	Orange 48, JOCD-4/0

## TUBULAR CABLE LUGS, TWO-HOLE, FOR GROUND BUSBAR (부스바용 동관단자) TYPE-BT

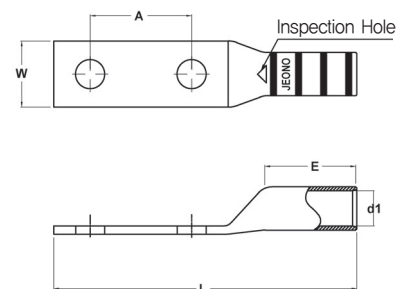
- Material : Electrolytic Copper (TPC)
- Surface : Tin Plated
- With Inspection Hole
- Color Coded to Show Proper Die Number and Color 10mm<sup>2</sup>~400mm<sup>2</sup>
- UL Listed 486A-486B up to 35KV



Part Number	Wire Range				Stud Size	Dimension (mm)					Color Code & Die No
	CODE		FLEX			W	d1	A	E	L	
	AWG	mm²	AWG	mm²							
JOBT 0201–SL05	8	10	8	10	M5	10	4.5	16	19	56	Red 21, JOCD–8
JOBT 0201–SL06					M6					56	
JOBT 0202–SL06	6	16	6	16	M6	12	5.4	16	25	62	Blue 24, JOCD–6
JOBT 0202–SL10S					M10	15.5				19	
JOBT 0202–SL10					M10			25		83	
JOBT 0203–SL06S	4	25	–	–	M6	14	6.7	16	25	62	Gray 29, JOCD–4
JOBT 0203–SL06					M6			19		65	
JOBT 0203–SL10					M10	15.5		25		84	
JOBT 0204–SL06	2	35	4	25	M6	16	8.1	16	29.5	69	Brown 33, JOCD–2
JOBT 0204–SL10S					M10			19		82	
JOBT 0204–SL10					M10			25		88	
JOBT 0205–SL10	1	50	2	35	M10	18	9.5	25	35	93	Green 37, JOCD–1
JOBT 0205–SL12					M12			44.5		113	
JOBT 0206–SL10	1/0	60	1	50	M10	19	10.2	25	36	97	Pink 42, JOCD–1/0
JOBT 0206–SL12					M12			44.5		116.5	
JOBT 0207–SL10	2/0	70	1	50	M10	21	11.3	25	36	100	Black 45, JOCD–2/0
JOBT 0207–SL12					M12			44.5		119	
JOBT 0208–SL10	3/0	95	2/0	70	M10	25	13.5	25	38.5	104	Orange 48, JOCD–3/0
JOBT 0208–SL12					M12			44.5		124	
JOBT 0209–SL10	4/0	100	2/0	70	M10	26	14	25	41	110	Orange 50, JOCD–4/0
JOBT 0209–SL12					M12			44.5		130	

## TUBULAR CABLE LUGS, TWO-HOLE, FOR GROUND BUSBAR (부스바용 동관단자) TYPE-BT

- Material : Electrolytic Copper (TPC)
- Surface : Tin Plated
- With Inspection Hole
- Color Coded to Show Proper Die Number and Color 10mm<sup>2</sup>~400mm<sup>2</sup>
- UL Listed 486A-486B up to 35KV



Part Number	Wire Range				Stud Size	Dimension (mm)					Color Code & Die No
	CODE		FLEX			W	d1	A	E	L	
	AWG	mm²	AWG	mm²							
JOBT 0210–SL10	250 kcmil	120	3/0	95	M10	27.5	15.2	25	41.5	110	Purple 54, JOCD-250 kcmil
JOBT 0210–SL12					M12			44.5		130	
JOBT 0211–SL10	300 kcmil	150	250 kcmil	120	M10	31	17	25	56	127	Yellow 62, JOCD-300 kcmil
JOBT 0211–SL12					M12			44.5		146	
JOBT 0212–SL10	350 kcmil	185	300 kcmil	150	M10	35	19	25	56	131	Red 71, JOCD-350 kcmil
JOBT 0212–SL12					M12			44.5		150	
JOBT 0213–SL10	400 kcmil	200	350 kcmil	185	M10	37.5	21	25	59	138	Blue 76, JOCD-400 kcmil
JOBT 0213–SL12					M12			44.5		157	
JOBT 0214–SL10	500 kcmil	240	400 kcmil	200	M10	40	22	25	63	146	Brown 87, JOCD-500 kcmil
JOBT 0214–SL12					M12			44.5		165	
JOBT 0215–SL10	600 kcmil	300	500 kcmil	240	M10	45	24	25	66	151	Green 94, JOCD-600 kcmil
JOBT 0215–SL12					M12			44.5		170	
JOBT 0216–SL10	750 kcmil	400	600 kcmil	300	M10	50	27	25	72.5	156	Black 106, JOCD-750 kcmil
JOBT 0216–SL12					M12			44.5		175	