

Cable Ties and Cable Accessories

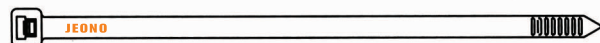
(케이블 타이와 악세서리)

Cable Ties – Nylon 6.6 (케이블타이)	D2
Cable Ties – Flame Retardant Nylon 6.6 (난연성케이블타이)	D3
Cable Ties – Weather Resistant Nylon 6.6 (내후성케이블타이)	D4
Cable Ties – Heat Stabilized Nylon 6.6 (내열성케이블타이)	D5
Releasable Ties, Cord Band (릴리저블타이, 코드밴드)	D6
Marker Ties, Push Mount Ties (마커타이, 푸쉬마운트타이)	D7
In-Line Cable Ties – Nylon 6.6, Spacer Support (인라인타이, 스페이스서포트)	D8
Cable Clamps, Metal Clamps (케이블클램프, 메탈클램프)	D9
Adhesive Backed Cable Tie Mounts, Cable Tie Mounts (부착형 타이마운트, 타이마운트)	D10
Low Profile Mounts (로우프로필마운트)	D10
Cable Tie Mounts – Screw Applied (스크류타입마운트)	D11
Saddle Type Tie Mounts, Cable Tie Mounts (새들타입마운트, 타이마운트)	D11
Cord Clamps, Cable Tags (코드클램프, 케이블택)	D12
Mounting Button, Screw Cap, Screw Cover (마운팅버튼, 스크류캡, 스크류커버)	D13
Quick Clamps, Card Holder, Marker Plated (퀵클램프, 카드홀더, 마커플레이트)	D14
Stainless Steel Cable Ties – Self Locking (스테인레스 스틸 케이블타이)	D15
Stainless Steel Cable Ties – Fully Coated (스테인레스 스틸 케이블타이 – 풀코팅)	D16
Stainless Steel Cable Ties – Semi Coated (스테인레스 스틸 케이블타이 – 반코팅)	D17
Stainless Steel Cable Ties – Wing Buckle Type (스테인레스 스틸 케이블타이 – wing 버클타입)	D18
Cushion Sleeve (쿠션슬리브)	D18
Stainless Steel Cable Tie Mounts (스테인레스 스틸 2-way 마운트)	D19
Stainless Steel Mounting Base (스테인레스 스틸 마운팅 베이스)	D19
Stainless Steel Marker Plate (스테인레스 스틸 마커 플레이트)	D19
Cable Bracket (케이블브라켓)	D20

CABLE TIES – NYLON 6.6 (케이블타이)

TYPE-J

- Flammability : UL 94V-2
- Halogen free - Natural Color Only
- Operating temperature : 85°C
- Color : Natural or All Colors
- For indoor use



Part Number	Length (mm)	Width (mm)	Thickness (mm)	Max. Bundle Dia. (mm)	Min. Loop Tensile Strength		Installation Tool No	Package Qty.
					Lbs	Kg		

• Subminiature-Series 2.5

J-100	103	2.5	0.9	22	18	8.1	JOT-702 JOT-328	1000
J-162	162		1.0	40				
J-202	200		1.0	51				

• Intermediate-Series 3.6

J-140	148	3.6	1.1	35	40	18.1	JOT-702 JOT-328	1000
J-203	200		1.3	51				
J-303	300		1.3	77				

• Standard-Series 4.8

J-200	201	4.8	1.3	48	50	22.6	JOT-702 JOT-328	1000
J-250	252		1.3	64				500
J-300	300		1.4	76				
J-373	368		1.5	102				

• Light Heavy-Series 6.0

J-270	270	6.0	1.4	73	100	45.3	JOT-519 JOT-600L	500
-------	-----	-----	-----	----	-----	------	---------------------	-----

• Duty Heavy-Series 7.6

J-307	300	7.6	1.6	76	120	54.4	JOT-519 JOT-600L	300
J-370	370		1.6	102				

• Heavy-Series 9.0

J-450	450	9.0	1.9	127	175	79.3	JOT-519 JOT-600L	100
J-530	530			152				
J-780	780			229				
J-1000	1000			305				

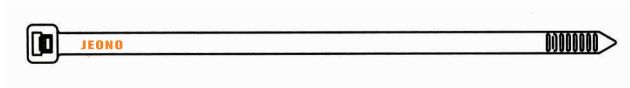
• Extra Heavy-Series 12.7

J-300EH	300	12.7	2.1	70	250	113	JOT-600L	100
J-400EH	400			102				
J-540EH	540			150				

CABLE TIES – FLAME RETARDANT NYLON 6.6 (난연성케이블타이)

TYPE-JV

- Flammability : UL 94V-0
- Halogen free
- Operating temperature : 85℃
- Color : Natural only
- For indoor use



Part Number	Length (mm)	Width (mm)	Thickness (mm)	Max. Bundle Dia. (mm)	Min. Loop Tensile Strength		Installation Tool No	Package Qty.
					Lbs	Kg		

• Subminiature-Series 2.5

JV-100	103	2.5	0.9	22	18	8.1	JOT-702 JOT-328	1000
JV-162	162		1.0	40				
JV-202	200		1.0	51				

• Intermediate-Series 3.6

JV-140	148	3.6	1.1	35	40	18.1	JOT-702 JOT-328	1000
JV-203	200		1.3	51				
JV-303	300		1.3	77				

• Standard-Series 4.8

JV-200	201	4.8	1.3	48	50	22.6	JOT-702 JOT-328	1000
JV-250	252		1.3	64				500
JV-300	300		1.4	76				
JV-373	368		1.5	102				

• Light Heavy-Series 6.0

JV-270	270	6.0	1.4	73	100	45.3	JOT-519 JOT-600L	500
--------	-----	-----	-----	----	-----	------	---------------------	-----

• Duty Heavy-Series 7.6

JV-307	300	7.6	1.6	76	120	54.4	JOT-519 JOT-600L	300
JV-370	370		1.6	102				

• Heavy-Series 9.0

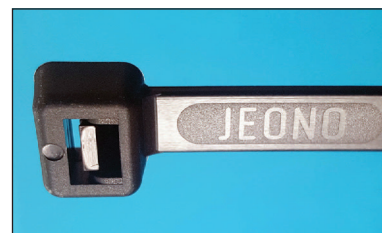
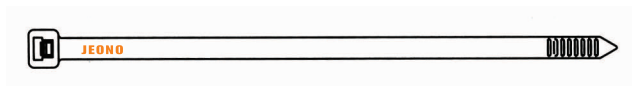
JV-450	450	9.0	1.9	127	175	79.3	JOT-519 JOT-600L	100
JV-530	530			152				
JV-780	780			229				
JV-1000	1000			305				

• Extra Heavy-Series 12.7

JV-300EH	300	12.7	2.1	70	250	113	JOT-600L	100
JV-400EH	400			102				
JV-540EH	540			150				

CABLE TIES – WEATHER RESISTANT NYLON 6.6 (내후성케이블타이) TYPE-JW

- Flammability : UL 94V-2
- Color : UV Black
- Operating temperature : 85℃
- Greater resistance to damage caused by ultraviolet light
- indoor or outdoor use



Part Number	Length (mm)	Width (mm)	Thickness (mm)	Max. Bundle Dia. (mm)	Min. Loop Tensile Strength		Installation Tool No	Package Qty.
					Lbs	Kg		

• Subminiature-Series 2.5

JW-100	103	2.5	0.9	22	18	8.1	JOT-702 JOT-328	1000
JW-162	162		1.0	40				
JW-202	200		1.0	51				

• Intermediate-Series 3.6

JW-140	148	3.6	1.1	35	40	18.1	JOT-702 JOT-328	1000
JW-203	200		1.3	51				
JW-303	300		1.3	77				

• Standard-Series 4.8

JW-200	201	4.8	1.3	48	50	22.6	JOT-702 JOT-328	1000
JW-250	252		1.3	64				500
JW-300	300		1.4	76				
JW-373	368		1.4	102				

• Light Heavy-Series 6.0

JW-270	270	6.0	1.4	73	100	45.3	JOT-519 JOT-600L	500
--------	-----	-----	-----	----	-----	------	---------------------	-----

• Duty Heavy-Series 7.6

JW-307	300	7.6	1.6	76	120	54.4	JOT-519 JOT-600L	300
JW-370	370		1.6	102				

• Heavy-Series 9.0

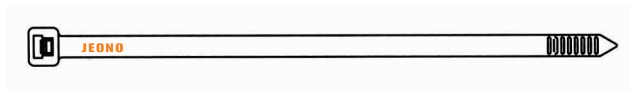
JW-450	450	9.0	1.9	127	175	79.3	JOT-519 JOT-600L	100
JW-530	530			152				
JW-780	780			229				
JW-1000	1000			305				

• Extra Heavy-Series 12.7

JW-300EH	300	12.7	2.1	70	250	113	JOT-600L	100
JW-400EH	400			102				
JW-540EH	540			150				

CABLE TIES – HEAT STABILIZED NYLON 6.6 (내열성케이블타이) TYPE-HS

- Flammability : UL 94V-2
- For High temperature applications up to 115°C
- Color : Black
- For indoor use



Part Number	Length (mm)	Width (mm)	Thickness (mm)	Max. Bundle Die. (mm)	Min. Loop Tensile Strength		Installation Tool No	Package Qty.
					Lbs	Kg		

• Subminiature-Series 2.5

J-100HS	103	2.5	0.9	22	18	8.1	JOT-702 JOT-328	1000
J-162HS	162		1.0	40				
J-202HS	200		1.0	51				

• Intermediate-Series 3.6

J-140HS	148	3.6	1.1	35	40	18.1	JOT-702 JOT-328	1000
J-203HS	200		1.3	51				
J-303HS	300		1.3	77				

• Standard-Series 4.8

J-200HS	201	4.8	1.3	48	50	22.6	JOT-702 JOT-328	1000
J-250HS	249		1.3	64				500
J-300HS	300		1.4	76				
J-373HS	368		1.5	102				

• Light Heavy-Series 6.0

J-270HS	270	6.0	1.4	73	100	45.3	JOT-519 JOT-600L	500
---------	-----	-----	-----	----	-----	------	---------------------	-----

• Duty Heavy-Series 7.6

J-370HS	370	7.6	1.6	102	120	54.4	JOT-519 JOT-600L	300
---------	-----	-----	-----	-----	-----	------	---------------------	-----

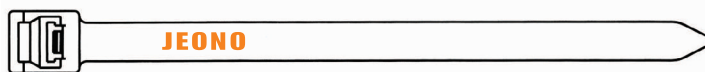
• Heavy-Series 9.0

J-450HS	450	9.0	1.9	127	175	79.3	JOT-519 JOT-600L	100
J-530HS	530			152				

RELEASABLE TIES – NYLON 6.6 (릴리저블타이)

TYPE-JLT

- Flammability : UL 94V-2
- Color : Natural or All Colors
- Operating temperature : 85°C
- For indoor use



• Extra Heavy-Series 12.7

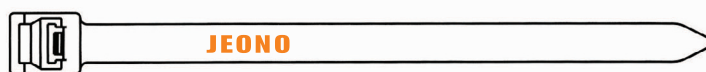


Part Number	Length (mm)	Width (mm)	Thickness (mm)	Max. Bundle Dia (mm)	Min. Loop Tensile Strength		Installation Tool No	Package Qty.
					Lbs	Kg		
JLT-540	540	12.7	1.9	150	250	113	JOT-600L JOT-GS4EH	100

RELEASABLE TIES – WEATHER RESISTANT NYLON 6.6 (내후성릴리저블타이)

TYPE-JLTW

- Flammability : UL 94V-2
- Color : UV Black
- Operating temperature : 85°C
- Greater resistance to damage caused by ultraviolet light - indoor or outdoor use



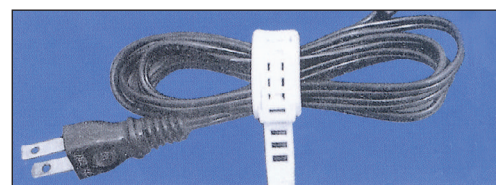
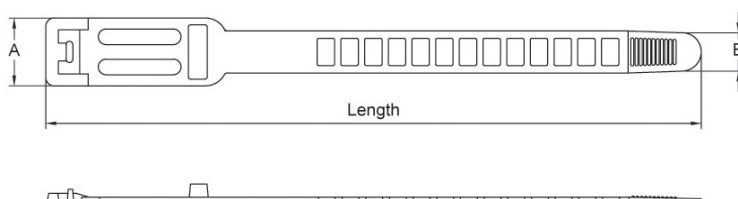
• Extra Heavy-Series 12.7



Part Number	Length (mm)	Width (mm)	Thickness (mm)	Max. Bundle Dia (mm)	Min. Loop Tensile Strength		Installation Tool No	Package Qty.
					Lbs	Kg		
JLTW-540	540	12.7	1.9	150	250	113	JOT-600L JOT-GS4EH	100

CORD BAND – Polyethylene (코드밴드)

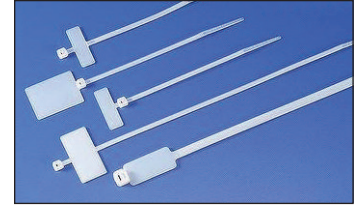
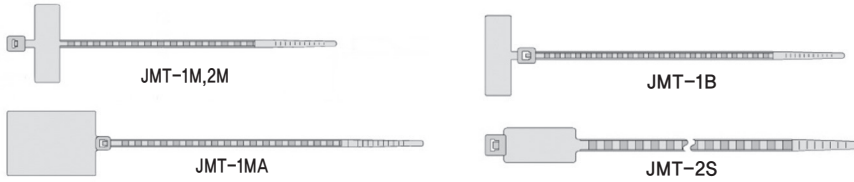
- Color : Natural or UV Black



Part Number	Length (mm)	A (mm)	Thickness (mm)	B (mm)	Package Qty.
JCB-150	157	16	1.0	10	500

MARKER TIES – NYLON 6.6 (마커타이)

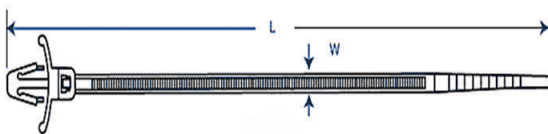
- Flammability : UL 94V-2
- Operating temperature : 85℃
- For indoor use



Part Number	Maker Type	Color	Length (mm)	Width (mm)	Marker Write-On Area(mm)	Max. Bundle Dia(mm)	Min. Loop Tensile Strength		Packing Qty.
							Lbs	Kg	
JMT-1B	Flag(Horizontal)	Natural	110	2.5	25×7.5	20	18	8.1	1,000
JMT-1M	Wrap(Horizonta)	Natural Yellow	100		25×8	19			
JMT-2M			200		25×8	51			
JMT-1MA	Flag(Vertical)	Natural	130		28×20	22			
JMT-2S	Wrap(Vertical)	Natural	200	4.6	28×13	50	50	22	

PUSH MOUNT TIES – NYLON 6.6 (푸쉬마운트타이)

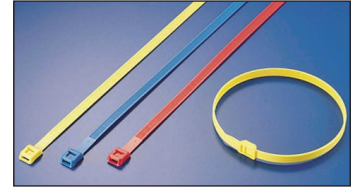
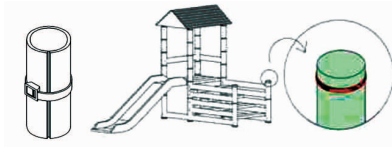
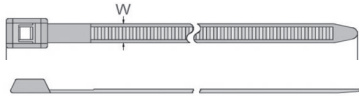
- Flammability : UL94V-2
- Feature : Press the tie into a pre-drilled hole and bind the cord by securing the tie



Part Number	Length (mm)	Color	Width (mm)	Max. Bundle Dia(mm)	Mounting hole diameter	Min. Loop Tensile Strength		Packing Qty.
						Lbs	Kg	
JPMT-100	112	Natural Black	2.5	25	4.6	18	8	1,000
JPMT-152	157		3.6	38	4.8	40	17.8	
JPMT-165	178		4.8	41	4.8	50	22	
JPMT-200	201		4.8	50	6.0			

IN-LINE CABLE TIES – NYLON 6.6 (인라인타이)

- Flammability : UL94V-2
- Color : Red, Blue, Yellow
- Feature : Flat headed low profile design to be used with playground equipment to avoid harming playing children



Part Number	Length (mm)	Width (mm)	Max. Bundle Dia (mm)	Min. Loop Tensile Strength		Package Qty.
				Lbs	Kg	
JIC-255	255	9.0	74	55	25	100
JiC-391	391	9.0	117	55	25	100

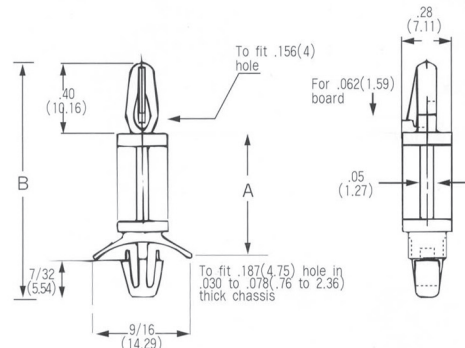
SPACER SUPPORT

(스페이스서포트)

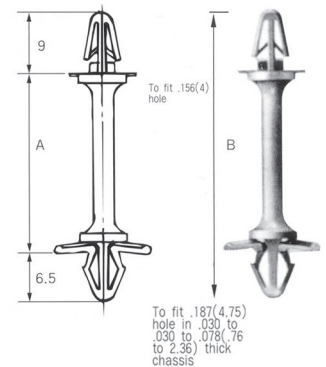
- Material : Nylon 6.6
- Color : Natural
- Two Styles Choice Between a Locking or Tension Barb End.



■ Tension Type



■ Locking Type

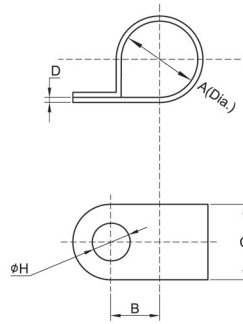


- Both ends lock by hand; no tools required
- Strong, dependable grip
- Materials: Nylon 6/6

Part No.	Dimension (mm)		BARB TYPE	Part No.	Dimension (mm)		BARB TYPE
	A	B			A	B	
JOSS-4N	4.8	22.8	Tension	JOSS-16N	15.8	33.8	Tension
		20	Locking			31.3	Locking
JOSS-6N	6.4	24.4	Tension	JOSS-19N	19	37	Tension
		21.9	Locking			34.5	Locking
JOSS-9N	9.5	27.5	Tension	JOSS-22N	22.2	40.2	Tension
		25	Locking			37.7	Locking
JOSS-11N	11.1	29.1	Tension	JOSS-25N	25.4	43.4	Tension
		26.6	Locking			40.9	Locking
JOSS-13N	12.7	30.7	Tension	JOSS-28N	28.5	46.5	Tension
		28.2	Locking			44	Locking

CABLE CLAMPS (케이블클램프)

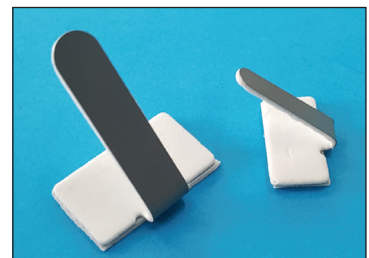
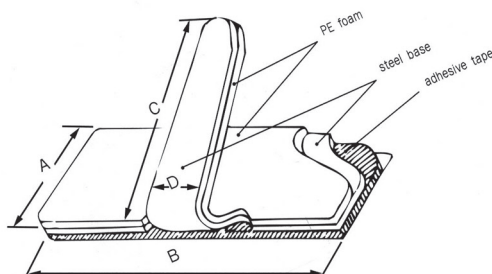
- Material : Nylon 6.6
- Color : Natural



Part Number	Dimension (mm)					Package Qty.
	Max. Bundle Diameter A	B	C	D	H	
JOC-2N	2.8	9.5	9.5	1.1	4.4 M4 Screw	1000
JOC-3N	4.6	10.3				
JOC-4N	5.6	11.1				
JOC-5N	7.4	11.9				
JOC-6N	10	12.7				
JOC-7N	10.7	13.5				
JOC-8N	11.9	14.3				
JOC-9N	13.5	15.1				
JOC-10N	14	15.9	12.7	1.5	5.1 M5 Screw	500
JOC-11N	16.8	17.5				
JOC-14N	20.4	19.8				
JOC-16N	23.0	21.3				
JOC-18N	25.0	23				
JOC-28N	37.5	30.1				300

METAL CLAMPS (메탈클램프)

- Material : SPC-1 steel



Part Number	Mounting Method	Dimensions(mm)				Bundle	Package Qty.
		A	B	C	D		
JOMC-101	Adhesive	7	15	10	5	Ø3.0~4.0	1000
JOMC-102		10	19	25	6	Ø7.0~8.0	
JOMC-103		14	25	45	7	Ø12~13	500
JOMC-104		28	40	38	7.5	Ø11~12	

D

ADHESIVE BACKED CABLE TIE MOUNTS

(부착형타이마운트)

- Material : Polystyrene
- Color : Natural or Black
- Allows cable tie entry from all four sides
- Available in multiple sizes to match application load requirements

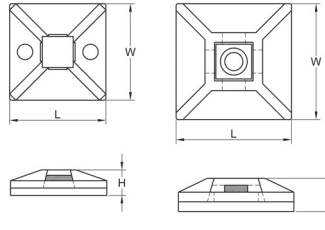
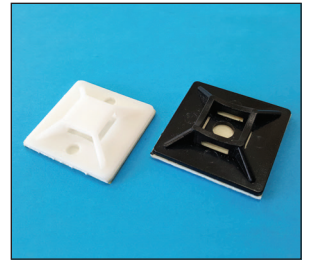


Fig 1

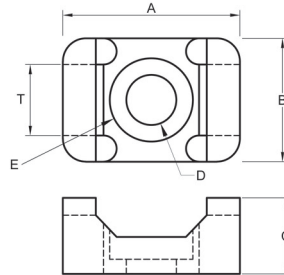
Fig 2



Part Number	Fig No.	Maximum Tie Width Accom.	Mounting Method	Dimension(mm)			Packing Qty.
				L	W	H	
JOMB-19	1	3,6mm	Adhesive or screw	19	19	5,4	1,000
JOMB-25		4,8mm		25	25	5,4	
JOMB-30	2	7,6mm	screw	30	30	7,5	500

CABLE TIE MOUNTS (타이마운트)

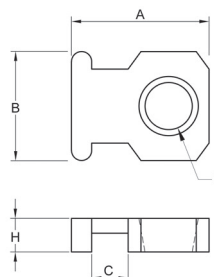
- Material : Nylon 6.6
- Color : Natural or Black
- Unique cradle design provides maximum stability for the cable bundle
- Low profile design keeps bundle close to mounting surface



Part Number	Color	Maximum Tie Width Accom.	Dimension (mm)						Package Qty.
			T	A	B	C	D	E	
JOTM-1S6	Natural Black	3,6	4,0	12,8	7,0	5,8	3,3	5,8	1,000
JOTM-2S6		4,8	5,0	15,0	9,5	7,0	3,8	7,3	
JOTM-2S8							4,6	7,3	
JOTM-3S8		7,6	8,5	23,8	15,2	11,3	4,6	10,0	
JOTM-3S10							5,1	10,0	
JOTM-3S25							6,6	10,0	
JOTM-4S10	Natural	9,0	9,0	23,3	16,0	9,8	5,2	10,8	
JOTM-4S25							6,3	10,8	
JOTM-5S10		9,0	10,4	20,8	17,4	10,4	5,9	11,2	

LOW PROFILE MOUNTS (로우프로필마운트)

- Material : Nylon 6.6
- Color : Natural or Black
- Low profile design keeps bundle close to mounting surface
- Small overall size
- Install with a screw or rivet for a strong, secure installation

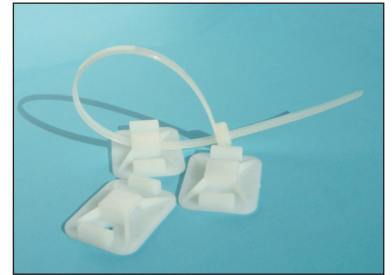
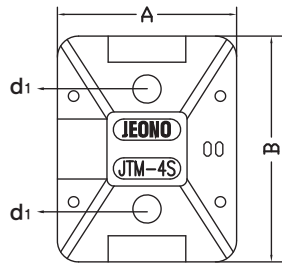


Part Number	Maximum Tie Width Accom.	Mounting Method	Dimensions (mm)					Package Qty.
			A	B	C	H	D	
JOLM-3	2,5	M3 Countersunk Screw	11,5	8,1	2,7	2,5	3,5	1000
JOLM-4	4,8	M4 Countersunk Screw	19,1	12,7	5,0	3,0	4,6	

CABLE TIE MOUNTS-SCREW APPLIED

(스크류타입마운트)

- Material : Nylon 6.6
- Color : Natural

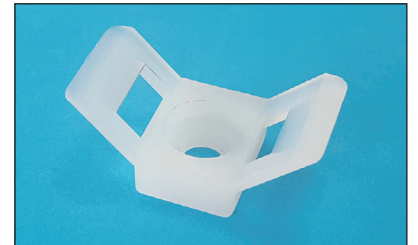
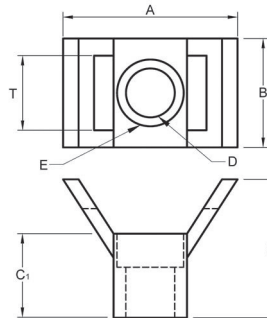


Part Number	Max Tie Width Accom.	Mounting Method	Dimensions (mm)			Package Qty.
			A	B	d1	
JTM-4S	7.9	M4 screw	25.6	32.6	4.2	500

SADDLE TYPE TIE MOUNTS

(새들타입마운트)

- Materials : Nylon 6.6
- Flammability : UL94V-2
- Color : Natural
- Saddle design provide maxium stability to wire bundle

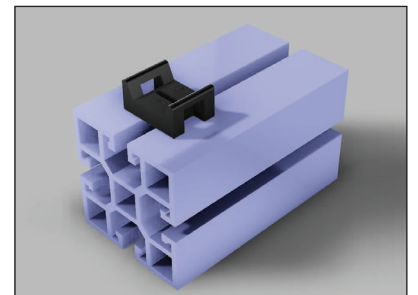
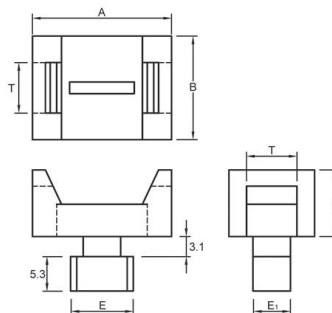


Part Number	Maximum Tie Width Accom.	Dimensions (mm)							Package Qty.
		T	A	B	C	C1	D (Hole Dia)	E (Counter bore Dia)	
JOHC-3	9.0	9.5	23.0	13.8	17.5	10.8	5.3	8.5	100
JOHC-4	9.0	9.3	30.0	14.7	11.6	5.9	5.0	9.5	

CABLE TIE MOUNTS

(타입마운트)

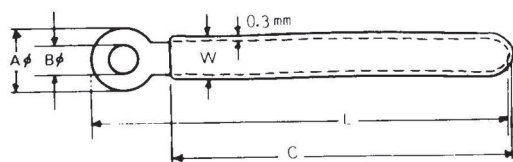
- Materials : Nylon 6.6
- Flammability : UL94V-2
- Color : Natural or Black
- Saddle design provide maxium stability to wire bundle



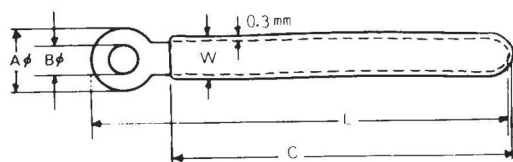
Part Number	Maximum Tie Width Accom.	Dimensions (mm)						Package Qty.
		T	A	B	C	E	E1	
JOHC-5	7.6	7.8	21.5	16.0	10.0	9.7	5.8	100

CORD CLAMPS (코드클램프)

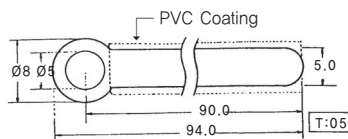
- Material : Galvanized Iron
- PVC Black Coating



JOLB



JOLC



•PART NO : JOLF-94-1

(mm)

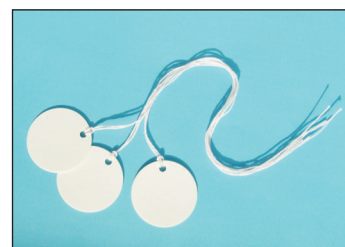
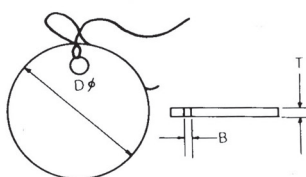
Part Number	AØ	BØ	C	W	L	Q' ty/bag
JOLB-2	6.0	3.2	41	2.6	50	100

(mm)

Part Number	AØ	BØ	C	W	L	Q' ty/bag
JOLC-2	9.0	4.2	41	2.6	50	100

CABLE TAGS (케이블택)

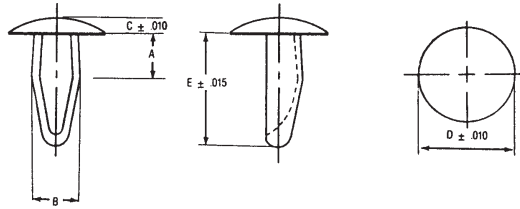
- Material : Fiber
- Color : White



Part Number	Dimensions (mm)			Package Qty.
	D	B	T	
JTG-20	20	3.2	1.0	1,000
JTG-25	25			1,000
JTG-30	30			1,000
JTG-40	40			500

MOUNTING BUTTON (마운팅버튼)

- Material : Nylon 6.6
- Color : Natural



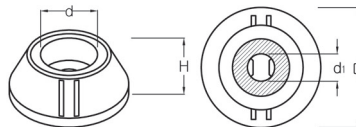
Part Number	Material Thickness "A" (mm)	Hole Size "B" (mm)	Head Height "C" (mm)	Head Dia "D" (mm)	Body Length "E" (mm)	Q'ty/bag
JOMB-31	3	3.1	1.4	7.4	12.8	2,000



D

SCREW CAP (스크류캡)

- Material : ABS (Flame Resistance)
- Flammability : UL 94 V-O
- Color : Gray

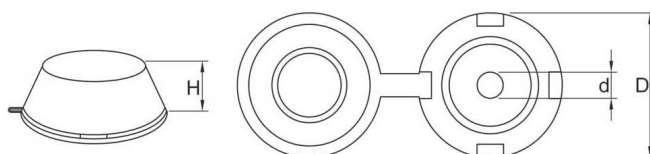


Part Number	Mounting Method	Dimension (mm)				Q'ty/bag
		D	d	d1	H	
JOBC-M5	M5 Screw	22.0	10.5	5.0	9.1	300



SCREW COVER (스크류커버)

- Material : Polypropylene (Flame Resistance)
- Flammability : UL 94 V-O
- Color : Gray



Part Number	Mounting Method	Dimension (mm)			Q'ty/bag
		D	d	H	
JBC-M4	M4 Screw	17.3	4.4	6.8	300
JBC-M4L	M4 Screw	25.0	4.4	9.0	100

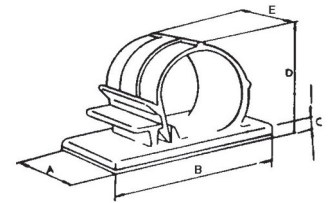
*JBC-M4L is applicable for bolt with flat and lockwasher.



QUICK CLAMPS (퀵클램프)

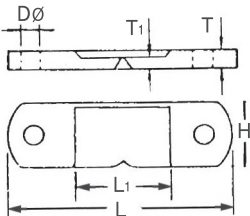
- Material : Nylon 6.6
- Color : Gray

Part Number	Mounting Method	Dimension (mm)						Package Qty.
		A	B	C	D	E	Bundle	
JOQC-101	Adhesive	13.7	25.0	3.3	9.8	9.0	5.3	1,000
JOQC-102		13.7	24.6	3.3	11.5	10.0	6.5	1,000
JOQC-103		16.1	25.0	3.3	13.8	12.5	9.2	1,000
JOQC-104		19.2	29.3	3.8	17.7	15.0	13.5	500
JOQC-106		25.1	34.2	3.8	25.2	16.6	20.0	300

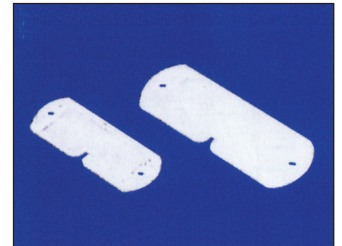


CARD HOLDER (카드홀더)

- Material : PS
- Color : Clear

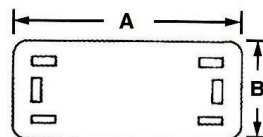


Part Number	Dimensions (mm)						Packing Qty.
	Dø	H	L	L1	T	T1	
JCH-1	3.0	18	45	33	2.7	1.3	1,000
JCH-2	3.7	23	61	46	3.0	2.0	500



MARKER PLATES - PVC (마커플레이트)

- Color : Ivory

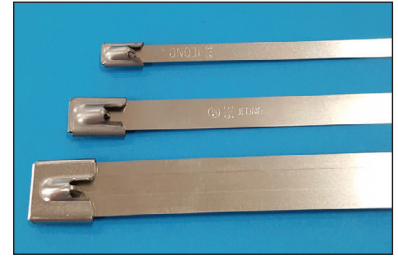


Part Number	Maximum Tie Width Accom.	Mounting Method	Dimensions (mm)		Thickness (mm)	Package Qty.
			A	B		
JTC-1	4.8	Cable Ties	45	19	0.3	1,000
JTC-2			60	40		500

STAINLESS STEEL CABLE TIES – SELF-LOCKING

(스테인레스 스틸 케이블타이)

- Metal : AISI 304 or AISI 316 Grade stainless steel
- For indoor or outdoor use.
- High temperature applications ranging -60°C to 300°C



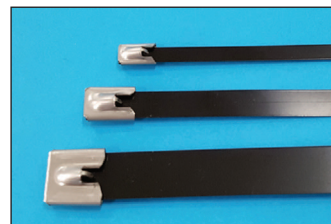
Part Number		Max. Bundle Dia. (mm)	Length (mm)	Min. Loop Tensile Strength		Min. Bundle Dia. (mm)	Width (mm)	Thickness (mm)	Package Qty.
AISI 304	AISI 316			Lbs	Kg				
JSST125S-304	JSST125S-316	25	125	200	90.8	12.7	4.6	0.25	100
JSST150S-304	JSST150S-316	35	150						
JSST200S-304	JSST200S-316	51	200						
JSST260S-304	JSST260S-316	69	260						
JSST300S-304	JSST300S-316	76	300						
JSST360S-304	JSST360S-316	102	360						
JSST520S-304	JSST520S-316	152	520						
JSST680S-304	JSST680S-316	203	680						
JSST840S-304	JSST840S-316	254	840						
JSST1000S-304	JSST1000S-316	304	1000						
JSST150H-304	JSST150H-316	35	150	330	150	12.7	7.9	0.25	50
JSST200H-304	JSST200H-316	51	200						
JSST260H-304	JSST260H-316	69	260						
JSST300H-304	JSST300H-316	76	300						
JSST360H-304	JSST360H-316	102	360						
JSST520H-304	JSST520H-316	152	520						
JSST680H-304	JSST680H-316	203	680						
JSST840H-304	JSST840H-316	254	840						
JSST1000H-304	JSST1000H-316	304	1000						
JSST440EH-304	JSST440EH-316	102	434	600	272	25.4	12.7	0.25	50
JSST600EH-304	JSST600EH-316	152	594						
JSST760EH-304	JSST760EH-316	203	754						
JSST920EH-304	JSST920EH-316	254	912						
JSST1100EH-304	JSST1100EH-316	305	1000						
JSST440UH-304	JSST440UH-316	102	434	900	408	25.4	15.9	0.38	10
JSST600UH-304	JSST600UH-316	152	594						
JSST760UH-304	JSST760UH-316	203	754						
JSST920UH-304	JSST920UH-316	254	912						
JSST1100UH-304	JSST1100UH-316	305	1000						

*JSST XXX UH Types are uncertified products.

STAINLESS STEEL CABLE TIES – FULLY COATED

(스테인레스 스틸 케이블타이 – 풀코팅)

- Base metal : AISI 304 or 316 Grade stainless steel
- Coating : Polyester Black (Epoxy)
- Resistance to chemicals and salt spray
- Halogen free
- Temperature tolerance -60°C to 165°C
- For communication and electrical cables



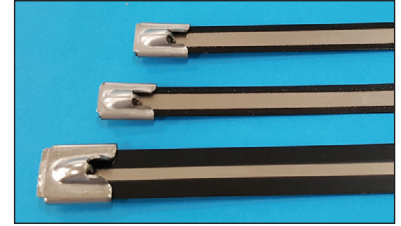
Part Number		Max. Bundle Dia. (mm)	Length (mm)	Min. Loop Tensile Strength		Min. Bundle Dia. (mm)	Width (mm)	Thickness (mm)	Package Qty.
AISI 304	AISI 316			Lbs	Kg				
JSFT125S-304#	JSFT125S-316#	25	125	100	45.4	12.7	4.6	0.25	100
JSFT150S-304#	JSFT150S-316#	35	150						
JSFT200S-304#	JSFT200S-316#	51	200						
JSFT260S-304#	JSFT260S-316#	69	260						
JSFT300S-304#	JSFT300S-316#	76	300						
JSFT360S-304#	JSFT360S-316#	102	360						
JSFT520S-304#	JSFT520S-316#	152	520						
JSFT680S-304#	JSFT680S-316#	203	680						
JSFT840S-304#	JSFT840S-316#	254	840						
JSFT1000S-304#	JSFT1000S-316#	304	1000						
JSFT150H-304#	JSFT150H-316#	35	150	250	113	12.7	7.9	0.25	50
JSFT200H-304#	JSFT200H-316#	51	200						
JSFT260H-304#	JSFT260H-316#	69	260						
JSFT300H-304#	JSFT300H-316#	76	300						
JSFT360H-304#	JSFT360H-316#	102	360						
JSFT520H-304#	JSFT520H-316#	152	520						
JSFT680H-304#	JSFT680H-316#	203	680						
JSFT840H-304#	JSFT840H-316#	254	840						
JSFT1000H-304#	JSFT1000H-316#	304	1000						
JSFT440EH-304#	JSFT440EH-316#	102	434	300	136	25.4	12.7	0.25	50
JSFT600EH-304#	JSFT600EH-316#	152	594						
JSFT760EH-304#	JSFT760EH-316#	203	754						
JSFT920EH-304#	JSFT920EH-316#	254	912						
JSFT1100EH-304#	JSFT1100EH-316#	305	1000						
JSFT440UH-304#	JSFT440UH-316#	102	434	450	204	25.4	15.9	0.38	10
JSFT600UH-304#	JSFT600UH-316#	152	594						
JSFT760UH-304#	JSFT760UH-316#	203	754						
JSFT920UH-304#	JSFT920UH-316#	254	912						
JSFT1100UH-304#	JSFT1100UH-316#	305	1000						

*JSST XXX UH Types are uncertified products.

STAINLESS STEEL CABLE TIES – SEMI-COATED

(스테인레스 스틸 케이블타이 – 반코팅)

- Base metal : AISI 304 or 316 Grade stainless steel
- Semi-Coated Stainless steel ties
- Coating : Polyester Black (Epoxy)
- Resistance to chemicals and salt spray
- Halogen free
- Temperature tolerance -60°C to 165°C
- For communication and electrical cables



Part Number		Max. Bundle Dia. (mm)	Length (mm)	Min. Loop Tensile Strength		Min. Bundle Dia. (mm)	Width (mm)	Thickness (mm)	Package Qty.
AISI 304	AISI 316			Lbs	Kg				
JSHT125S-304#	JSHT125S-304#	25	125	200	90.8	12.7	4.6	0.25	100
JSHT150S-304#	JSHT150S-304#	35	150						
JSHT200S-304#	JSHT200S-304#	51	200						
JSHT260S-304#	JSHT260S-304#	69	260						
JSHT300S-304#	JSHT300S-304#	76	300						
JSHT360S-304#	JSHT360S-304#	102	360						
JSHT520S-304#	JSHT520S-304#	152	520						
JSHT680S-304#	JSHT680S-304#	203	680						
JSHT840S-304#	JSHT840S-304#	254	840						
JSHT1000S-304#	JSHT1000S-304#	304	1000						
JSHT150H-304#	JSHT150H-316#	35	150	330	150	12.7	7.9	0.25	50
JSHT200H-304#	JSHT200H-316#	51	200						
JSHT260H-304#	JSHT260H-316#	69	260						
JSHT300H-304#	JSHT300H-316#	76	300						
JSHT360H-304#	JSHT360H-316#	102	360						
JSHT520H-304#	JSHT520H-316#	152	520						
JSHT680H-304#	JSHT680H-316#	203	680						
JSHT840H-304#	JSHT840H-316#	254	840						
JSHT1000H-304#	JSHT1000H-316#	304	1000						
JSHT440EH-304#	JSHT440EH-316#	102	434	600	272	25.4	12.7	0.25	50
JSHT600EH-304#	JSHT600EH-316#	152	594						
JSHT760EH-304#	JSHT760EH-316#	203	754						
JSHT920EH-304#	JSHT920EH-316#	254	912						
JSHT1100EH-304#	JSHT1100EH-316#	305	1000						
JSHT440UH-304#	JSHT440UH-316#	102	434	900	408	25.4	15.9	0.38	10
JSHT600UH-304#	JSHT600UH-316#	152	594						
JSHT760UH-304#	JSHT760UH-316#	203	754						
JSHT920UH-304#	JSHT920UH-316#	254	912						
JSHT1100UH-304#	JSHT1100UH-316#	305	1000						

*JSST XXX UH Types are uncertified products.

D

STAINLESS STEEL CABLE TIES – WING BUCKLE TYPE

(스테인레스 스틸 케이블타이 – 윙 버클타입)

- Material : AISI 316 or AISI 304 Grade stainless steel
- For indoor or outdoor use
- The wing is easily closed by banding tool(JOT-240)
- Coating : PVC



(A-type)

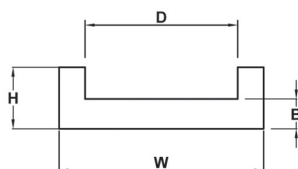


(B-type)

Part Number		Max. Bundle Dia. (mm)	Length (mm)	Min. Loop Tensile Strength		Width (mm)	Thickness (mm)	Package Qty.
A-type	B-type			Lbs	Kg			
JBZ 300UH-316A	JBZ 300UH-316B	83	300	600	271	16	0.4	100
JBZ 400UH-316A	JBZ 400UH-316B	121	400					
JBZ 550UH-316A	JBZ 550UH-316B	170	550					
JBZ 800UH-316A	JBZ 800UH-316B	242	800					
JBZ 1200UH-316A	JBZ 1200UH-316B	369	1200					

CUSHION SLEEVE (쿠션슬리브)

- Material : Neoprene (A-type)
- Color : Black
- Used on applications requiring improved gripping on non-resilient objects
- Can be used indoors and outdoors
- Isolation between dissimilar metals allows the ties and straps to be used with aluminum cable tray
- Provides full separation between the ties and the bundle
- Operating temperature -40°C to 93°C

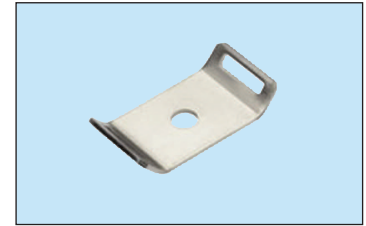
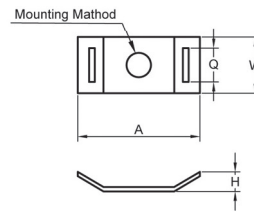


Part Number	Maximum Tie Width Accom	Dimensions (mm)				Length
		D	W	H	B	
JCS 119	7.9	8.0	11.9	3.4	1.8	30M per Roll

STAINLESS STEEL CABLE TIE MOUNTS

(스테인레스 스틸 2-way 마운팅 베이스)

- Material : AISI 304 or 316 Grade Stainless Steel
- Available in two sizes taking cable ties up to 8.0mm width
- Simply installed with M4 or M6 screw or bolt.



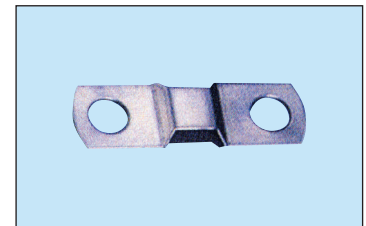
Part Number	Max.Tie Width Accom.	Mounting Method	Dimensions (mm)				Package Qty.
			A	H	W	Q	
JSCTM 4	7.9	M4 screw	30.5	4.9	15.0	9.8	100
JSCTM 6		M6 screw					
JSCTM 5		M5 screw	16.2	6.2	12.0	8.4	

STAINLESS STEEL MOUNTING BASE

(스테인레스 스틸 마운팅 베이스)

- Material : AISI 304 or 316 Grade Stainless Steel

Part Number	Max.Tie Width Accom.	Mounting Method	Length (mm)	Width (mm)	Package Qty.
JSM-4	7.9	M4 screw	31.8	9.5	100

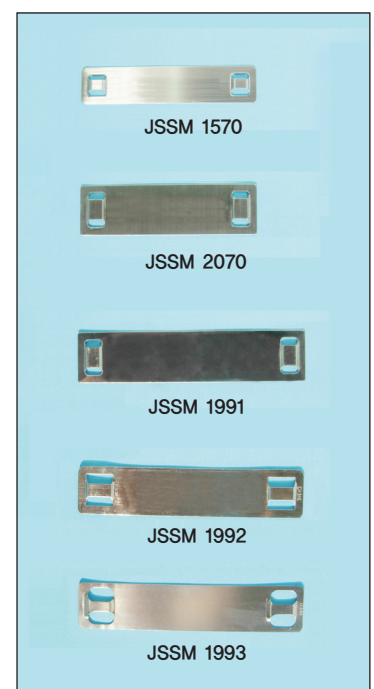


STAINLESS STEEL MARKER PLATE

(스테인레스 스틸 마커플레이트)

- Material : AISI 304 or 316 Grade Stainless Steel

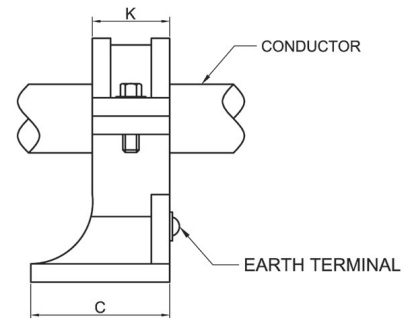
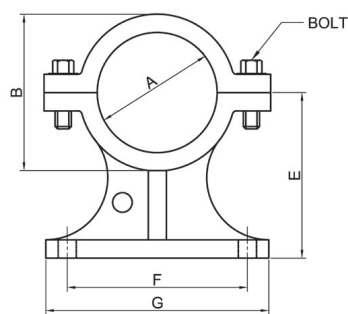
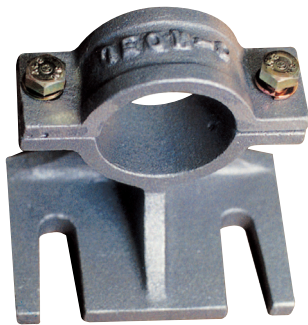
Part Number	Max.Tie Width Accom.	Width (mm)	Length (mm)	Thickness (mm)	Package Qty.
JSSM 1570-304	4.6	15	70	0.25	100
JSSM 1570-316					
JSSM 2070-304		20	70		
JSSM 2070-316					
JSSM 1991-304		19	90		
JSSM 1991-316					
JSSM 1992-304	7.9	19	90		
JSSM 1992-316					
JSSM 1993-304					
JSSM 1993-316					



Used with JEONO® Stainless Steel Cable Tie

CABLE BRACKET (케이블브라켓) TYPE-BK

- Material : Aluminum Alloy



Part Number	Dimension (mm)						
	F	E	C	A	G	B	K
JOBK 31	35	40	50	25	65	35	24
JOBK 32	50	50	50	35	75	45	25
JOBK 33	55	60	60	45	85	55	26
JOBK 34	75	80	70	60	115	72	28
JOBK 35	80	90	70	70	120	82	30
JOBK 36	110	110	80	90	150	104	28
JOBK 37	120	120	90	100	170	116	40
JOBK 38	150	140	100	120	200	135	41
JOBK 39	170	150	100	140	200	156	—